



# St Johns Grove

London, N19

Guide Price £650,000

This charming, light-filled two-bedroom flat well-located in the heart of the St John's Grove Conservation Area blends classic Victorian elegance with contemporary living. Situated on the first floor of a handsome period conversion, the property offers a pleasant aspect, two well-proportioned double bedrooms, a spacious lounge, and a separate fully fitted kitchen. Original features such as high ceilings, sash and bay windows, cornicing, and shutters add character and charm throughout. Chain-free and share of freehold.

**CHESTERTONS**



# St Johns Grove

## London, N19

- Two Double Bedroom
- Period Features
- Spacious Living Room
- Great Location
- Share of freehold
- Chain-free



Ideally located for both Overground and Northern Line transport links, and within easy reach of local shops, cafés, and the green open spaces of Hampstead Heath and Waterlow Park.

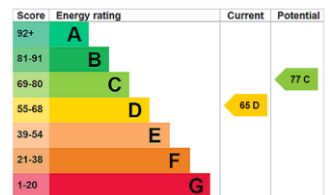
**Tenure:** Share of Freehold with 100 years remaining on the lease

**Service Charge:** TBC

**Ground Rent:** TBC

**Local Authority:** Islington

**Council Tax Band:** D



### *Chestertons Camden & Kentish Town Sales*

99-101 Parkway

Camden

London

NW1 7PP

camden@chestertons.co.uk

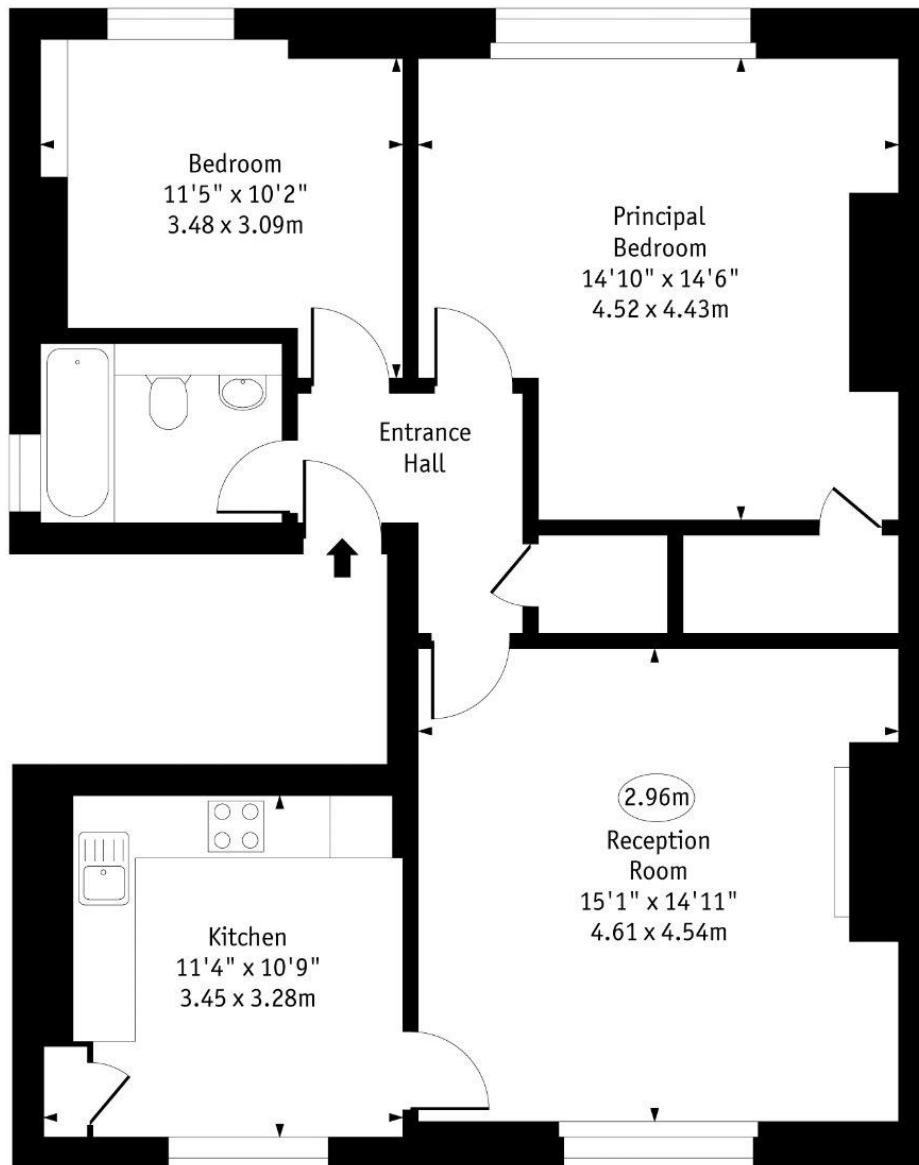
020 7267 2053

chestertons.co.uk

# St Johns Grove



○ - Ceiling Height



First Floor  
810 Sq Ft - 75.25 Sq M

Approx Gross Internal Area 810 Sq Ft - 75.25 Sq M

Every attempt has been made to ensure the accuracy of the floor plan shown.

However, all measurements, fixtures, fittings, and data shown are approximate interpretations and for illustrative purposes only. Measured according to the RICS. Not To Scale.

[www.goldlens.co.uk](http://www.goldlens.co.uk)  
Ref. No. 032043DH