



32 Wharfedale Place, Harrogate

£245,000



**YOUR AWARD
WINNING AGENT**

#DARINGTOBEDIFFERENT



An immaculately presented two-bedroom terrace house providing modern accommodation, in this fashionable and popular location.

To the rear of the property there is an enclosed courtyard garden and parking space. Wharfedale Place is a quiet cul-de-sac in the Harlow Hill area of Harrogate.



GROUND FLOOR

ENTRANCE VESTIBULE

LIVING ROOM

With feature fireplace and central heating radiator.

DINING KITCHEN

With a range of wall mounted cupboards, base units and drawers, electric oven, gas hob, understairs cupboard and window to the rear garden.

REAR VESTIBULE

With door to the rear courtyard.

BATHROOM

With modern white suite comprising bath with shower over and glazed side screen, basin, WC, window to the rear and central heating radiator.



FIRST FLOOR

MASTER BEDROOM

With built in wardrobes, central heating radiator and window to the front.

BEDROOM TWO

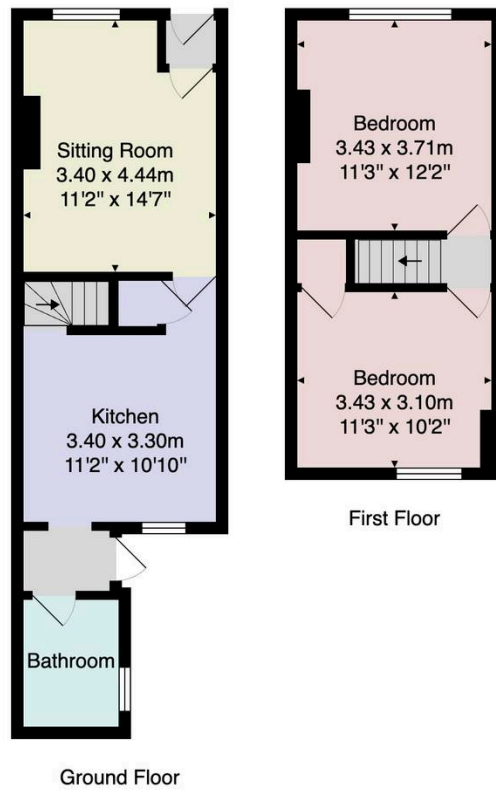
With central heating radiator and window to the rear.

OUTSIDE

To the front of the property is a shared forecourt garden with stone wall and hand gate.

To the rear of the property is a low maintenance courtyard garden, with hand gate to the rear access road parking space.





Total Area: 63.1 m² ... 679 ft²

All measurements are approximate and for display purposes only.

No liability is accepted by either the agency or Box Property Solutions Ltd as to the exact measurements of the rooms.
Box Property Solutions Ltd retains the copyright on this plan and allows agents to use it with agreed permission.

