



ASHWORTH HOLME
Sales · Lettings · Property Management



FLAT 5 27 PRINCES ROAD, M33 3EH
£1,150 PER CALENDAR MONTH



2



1



1



DESCRIPTION

A STUNNING TWO DOUBLE BEDROOM DUPLEX APARTMENT WHICH FORMS PART OF A BEAUTIFUL PERIOD CONVERSION AND IS OFFERED 'TO LET' ON A PART FURNISHED BASIS. This well presented property is situated in a convenient position close to the M60 motorway network and within easy walking distance of Sale Town Centre.

The apartment comprises: Communal entrance hallway, private entrance hallway, lounge with a beautiful bay window, modern fitted kitchen dining table, double bedroom and a modern bathroom which has been fitted with a white three piece suite. To the lower ground floor you will find the spacious master bedroom with large walk in wardrobe.

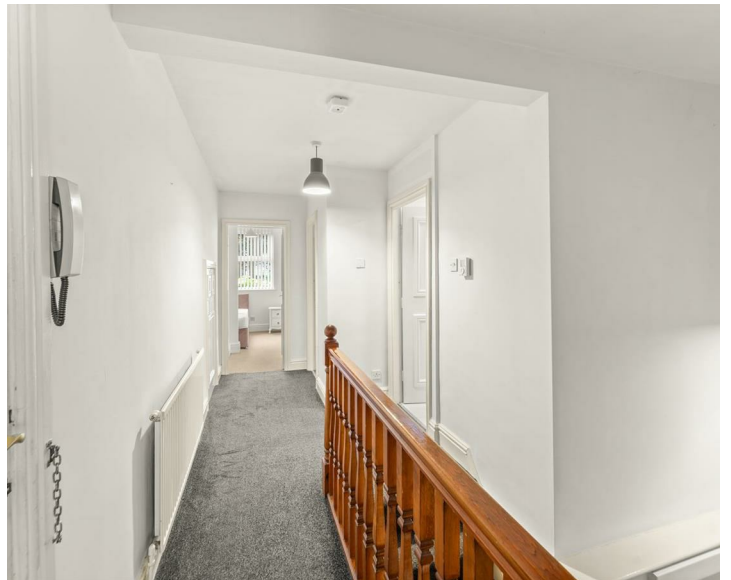
£100 holding deposit is applicable. Please note Ashworth Holme are a member of 'The Property Redress Scheme' and the 'CMP' client money protection scheme.

Council Tax Band B

KEY FEATURES

- Two double bedroom duplex apartment
- Offered to let on a part furnished basis
- Excellent location close to Sale Town Centre
- Presented to an excellent standard
- Period features throughout
- Available LATE APRIL







ASHWORTH HOLME

16-18 CROSS STREET, SALE, CHESHIRE M33 7AE
 T 0161 973 6680 E INFO@ASHWORTHHOLME.CO.UK
 WWW.ASHWORTHHOLME.CO.UK

| Energy Efficiency Rating | | Current | Potential |
|---|--|-------------------------|-----------|
| Very energy efficient - lower running costs | | | |
| (92 plus) A | | | |
| (81-91) B | | | |
| (69-80) C | | | |
| (55-68) D | | | |
| (39-54) E | | | |
| (21-38) F | | | |
| (1-20) G | | 1 | 1 |
| Not energy efficient - higher running costs | | | |
| England & Wales | | EU Directive 2002/91/EC | |

| Environmental Impact (CO ₂) Rating | | Current | Potential |
|---|--|-------------------------|-----------|
| Very environmentally friendly - lower CO ₂ emissions | | | |
| (92 plus) A | | | |
| (81-91) B | | | |
| (69-80) C | | | |
| (55-68) D | | | |
| (39-54) E | | | |
| (21-38) F | | | |
| (1-20) G | | 1 | 1 |
| Not environmentally friendly - higher CO ₂ emissions | | | |
| England & Wales | | EU Directive 2002/91/EC | |

