



2 Bedrooms | 1 Bathrooms | 1 Reception Rooms

Whytecliffe Road North | Purley | CR8 2AQ

£1,600

LOFT

Whytecliffe Road North | Purley | CR8 2AQ £1,600

- First floor maisonette with 2 double bedrooms
- Modern shower room with separate toilet
- Fitted kitchen and great size reception room
- Private entrance on ground floor that leads to large landing space
- Minutes walk from Purley train station
- Close to Purley town centre and amenities
- Available in January

Ground Floor

Entrance

First Floor

Landing

Reception Room

13'0 x 12'0 (3.96m x 3.66m)

Kitchen

11'7 x 8'8 (3.53m x 2.64m)

Bathroom

Separate WC

Bedroom 1

12'7 x 12'3 (3.84m x 3.73m)

Bedroom 2

12'0 x 11'9 (3.66m x 3.58m)

Outside

Communal Gardens

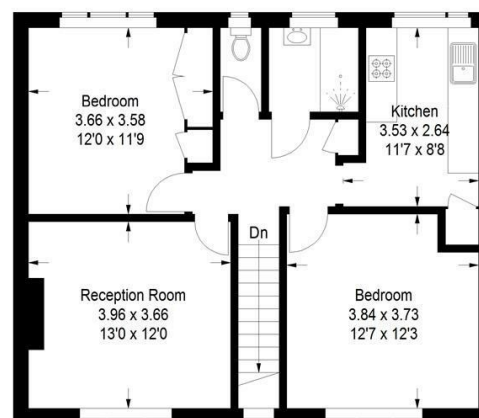


Whytecliffe Road, CR8

Approximate Gross Internal Area
66.0 sq m / 710 sq ft

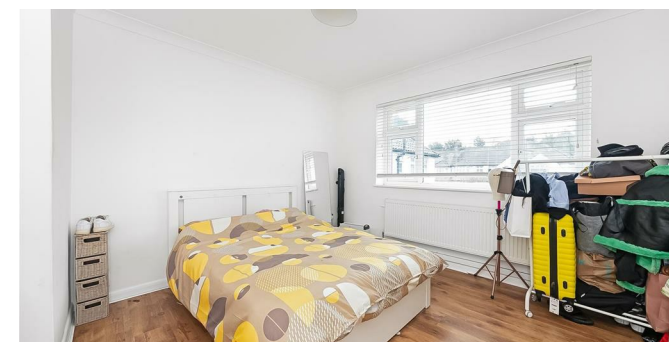


Ground Floor



First Floor

This plan is for layout guidance only. Not drawn to scale unless stated. Windows and door openings are approximate. Whilst every care is taken in the preparation of this plan, please check all dimensions, shapes and compass bearings before making any decisions reliant upon them. (ID1262515)



23a High Street
Purley
Surrey
CR8 2AF

0208 660 8070

hello@loft-estates.co.uk



EPC Rating: C