

Emma Terry Homes

moving made personal



12 Glebe Farm View

Gedling, Nottingham, NG4 4NZ

Asking price £550,000



12 Glebe Farm View, Gedling, Nottingham NG4 4NZ

Asking price £550,000

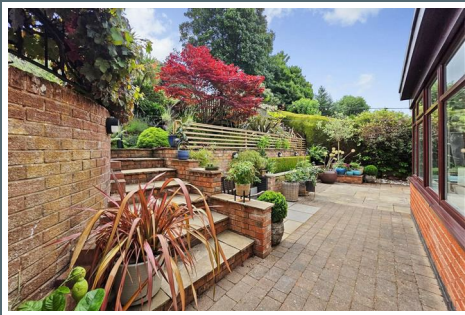
Presented to an exceptional standard throughout, this turn-key four-bedroom detached family home is ready to move straight into, offering spacious and versatile accommodation in a highly sought-after location.

The property comprises a welcoming entrance hall, a spacious living room with French doors opening onto a Juliet balcony, a stylish modern kitchen diner with integrated appliances, and a bright orangery overlooking the rear garden. There are four generous double bedrooms, including two with contemporary en-suite shower rooms, while the remaining bedrooms are served by a beautifully appointed family bathroom.

Outside, a driveway provides off-street parking for multiple vehicles and leads to a double garage. The landscaped rear garden has been thoughtfully designed for both relaxation and entertaining, boasting multiple patio and decked seating areas, mature planting, a pergola and a pizza oven.

Finished to a beautiful standard throughout and offering a true move-in-ready home, this fantastic property is ideally situated close to excellent schools, local amenities and transport links.

Early viewing is highly recommended.



ENTRANCE HALL

6'11" x 6'8" (2.11 x 2.04)

Composite entrance door to property, vertical central heating radiator, access to the garage and a UPVC double glazed obscure window to front.

BEDROOM 2

12'9" x 11'6" (3.90 x 3.52)

A central heating radiator, fitted wardrobes, access to the en-suite, an in-built storage cupboard and a UPVC double glazed window to front.

ENSUITE

9'8" x 4'10" (2.97 x 1.48)

Low level flush WC, wash hand basin in vanity unit, separate shower enclosure and a heated towel rail.

LANDING

Two in-built storage cupboards, open access to the kitchen diner, access to the first floor accommodation and loft access.

LIVING ROOM

19'8" x 17'8" (6.00 x 5.40)

Two vertical central heating radiators, a UPVC double glazed window to side and two full-height UPVC double glazed windows with double French doors opening to the Juliet balcony.

KITCHEN/DINER

23'3" x 15'7" (7.11 x 4.75)

A variety of wall and base units with Quartz worktops, an under-mount sink with hot boiling tap, an integrated Neff induction hob, two ovens, a microwave, a coffee machine, dishwasher, fridge, freezer & extractor fan, a feature breakfast bar island, a column central heating radiator, a vertical central heating radiator, open access to the orangery and bi-fold doors to the rear garden.

ORANGERY

16'10" x 12'9" (5.14 x 3.89)

A skylight lantern, UPVC double-glazed windows surround and double French doors opening out to the rear garden.

MASTER BEDROOM

12'3" x 11'2" (3.75 x 3.42)

A vertical central heating radiator, fitted wardrobes, access to the en-suite, a UPVC double glazed window with fitted shutters and a single UPVC door providing access to the rear garden.

ENSUITE

8'9" x 2'11" (2.69 x 0.90)

Enclosed toilet system WC, wash hand basin in vanity unit, a shower enclosure with an overhead rainfall shower and an handheld shower head, heated towel rail and a UPVC double glazed obscure window to side.

BEDROOM 3

12'4" x 9'8" (3.78 x 2.95)

A central heating radiator, an in-built storage cupboard and a UPVC double glazed window to front.

BEDROOM 4

12'3" x 9'6" (3.74 x 2.90)

A central heating radiator and a UPVC double glazed window to front.

BATHROOM

8'5" x 6'3" (2.57 x 1.91)

Enclosed toilet system WC, wash hand basin in vanity unit, a panelled bath with an overhead rainfall shower and a handheld shower head, a heated towel rail, and a UPVC double glazed obscure window to side.

OUTSIDE

To the front of the property is the driveway providing off-road parking for multiple cars, access to the garage, gated access to the rear and a lawn with plants and shrubs.

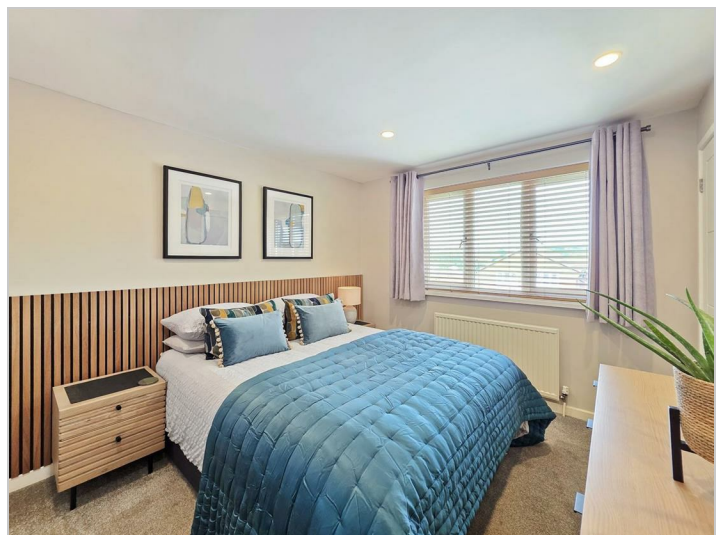
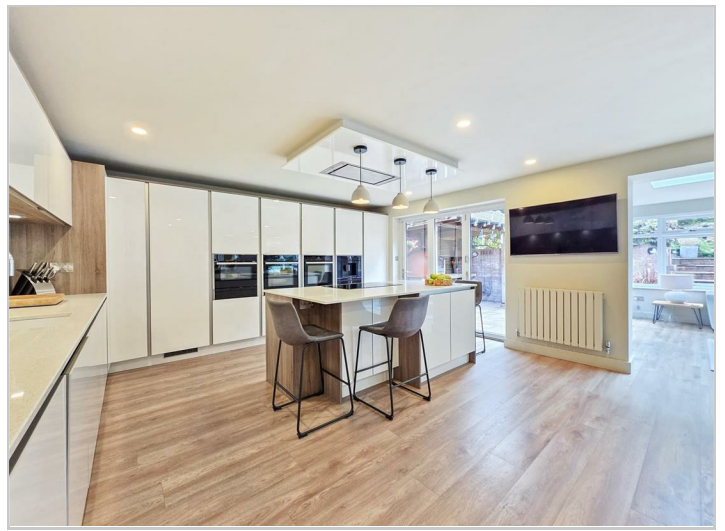
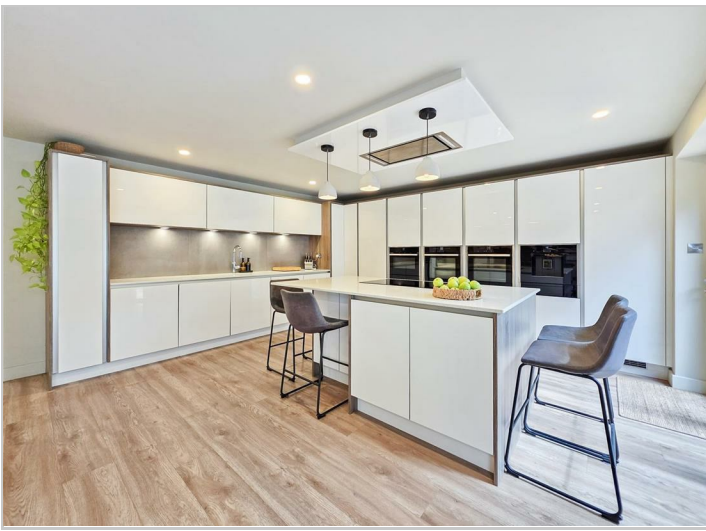
To the rear of the property is an enclosed private garden with a paved patio area, steps leading up to an additional paved patio area and a decked area, a wooden pergola with a pizza oven and a range of established plants and shrubs.

GARAGE

20'4" x 17'9" (6.21 x 5.42)

space and plumbing for a washing machine & tumble dryer, power and lighting and an electric roller door.









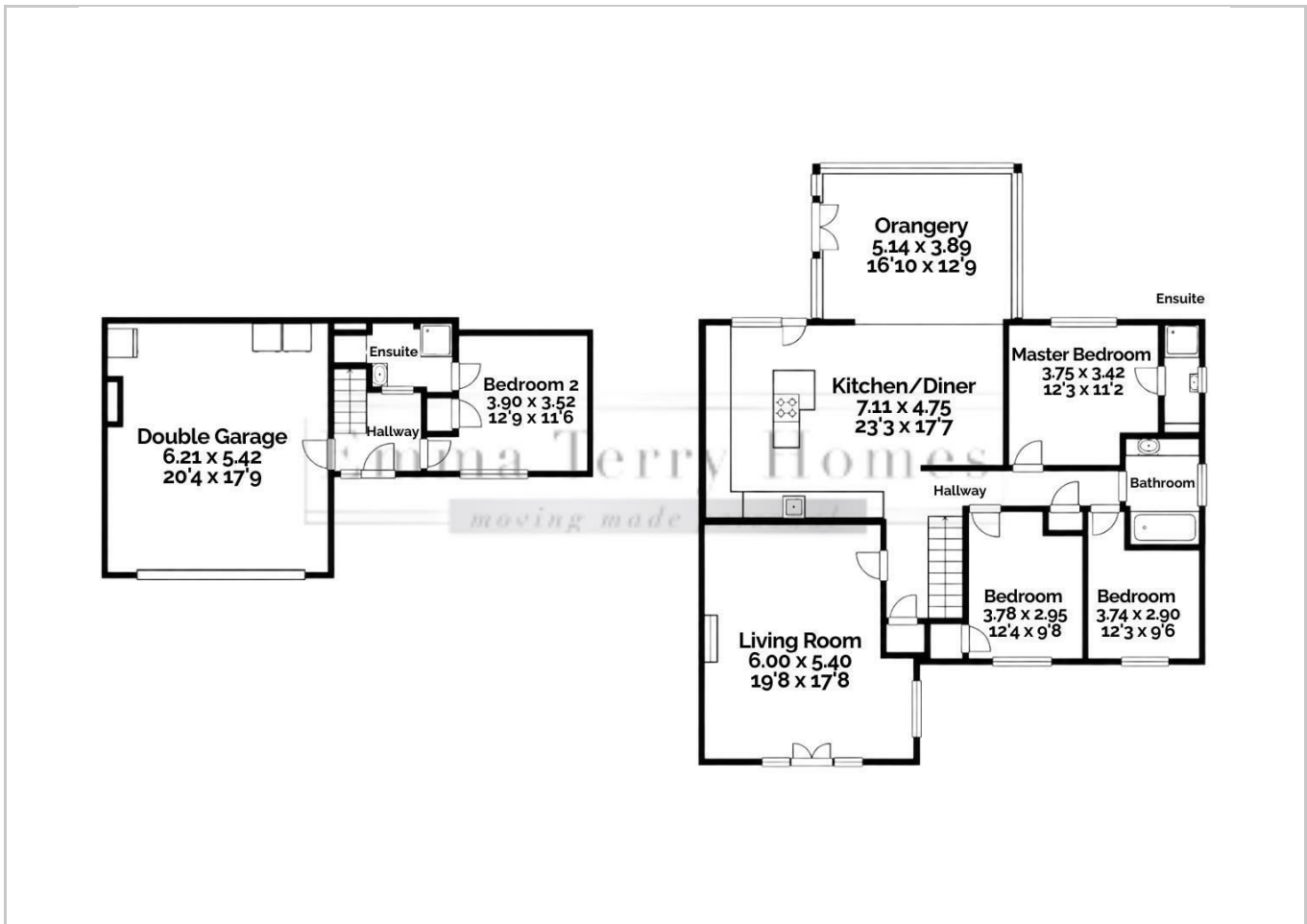
Road Map



Hybrid Map



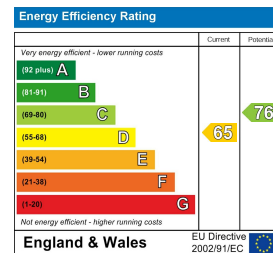
Terrain Map



Viewing

Please contact our Emma Terry Homes Office on 0115 966 57 41 if you wish to arrange a viewing appointment for this property or require further information.

Energy Efficiency Graph



These particulars, whilst believed to be accurate are set out as a general outline only for guidance and do not constitute any part of an offer or contract. Intending purchasers should not rely on them as statements of representation of fact, but must satisfy themselves by inspection or otherwise as to their accuracy. No person in this firm's employment has the authority to make or give any representation or warranty in respect of the property.