



Palace Court

250 Finchley Road, NW3

£8,000 per month
(£1,846.15 per week)

Short Let. A substantial 3 bedroom 4th floor lateral apartment in this imposing mansion block which is presented in superb condition with lift, porter and several balconies. The property is situated in an excellent location, within close proximity to the shops and restaurants of West Hampstead and within walking distance to Hampstead Village. Accommodation comprises reception room, fully fitted eat in kitchen, master bedroom with dressing room/study and en-suite bathroom, 2 further double bedrooms, family bathroom.

CHESTERTONS



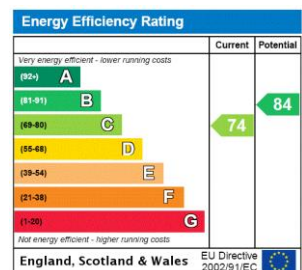
Palace Court

250 Finchley Road, NW3

- Short Let. A Substantial 4th Floor Lateral Apartment in Imposing Mansion Block
- 3 Bedrooms, 2 Bathrooms, Reception, Eat In Kitchen
- Presented in Superb Condition, Lift, Porter, Several Balconies
- Excellent Location Within Close Proximity to the Shops/Restaurants of West Hampstead, Walking Distance to Hampstead Village



Minimum Term: 3 months
Deposit Required: £7,384.62
Local Authority: London Borough Of Camden
Council Tax Band: G
EPC Rating: C
Furnished

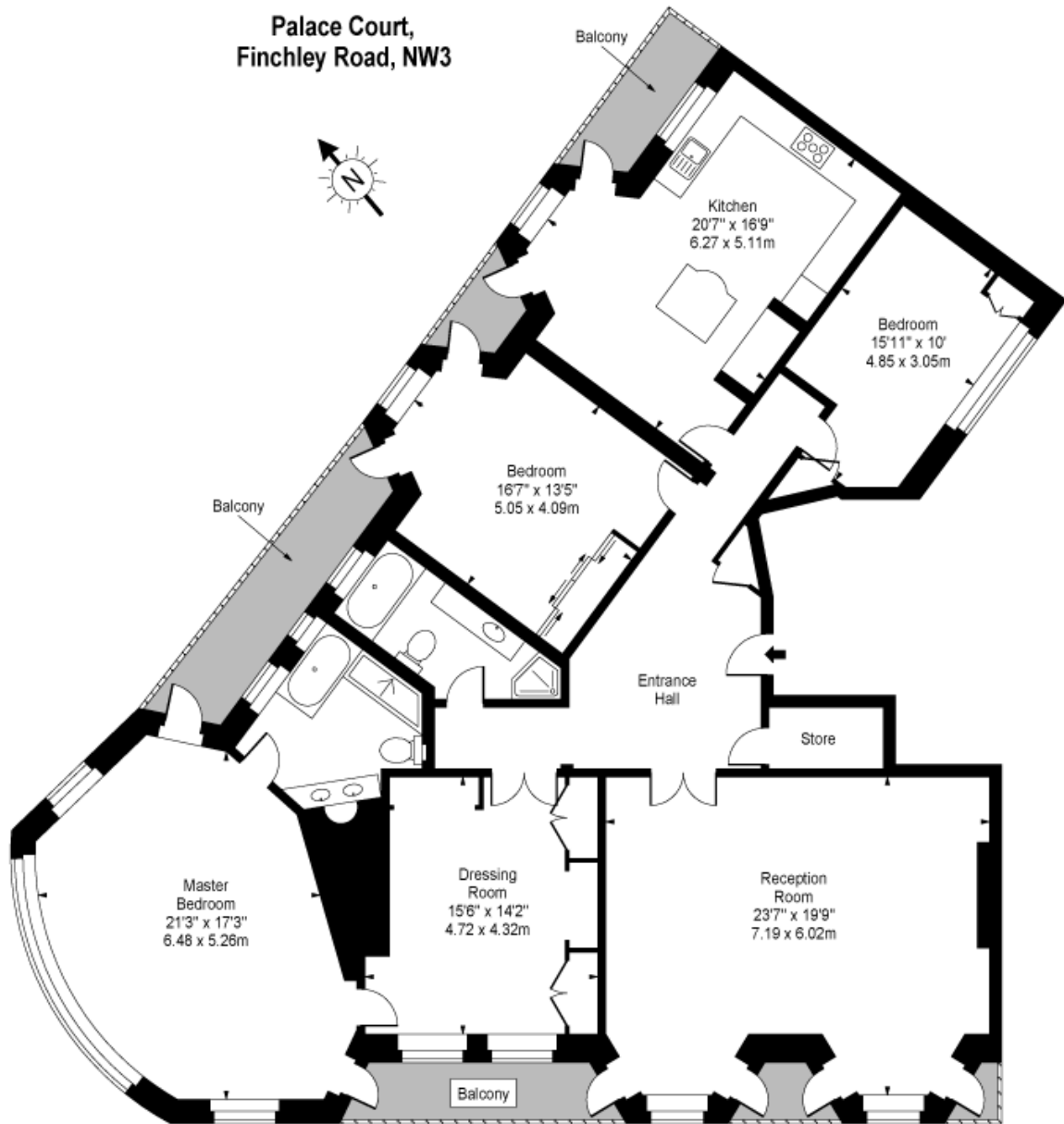


Chestertons Hampstead Lettings

55-56 Hampstead High Street
Hampstead
London
NW3 1QH
hampsteadlettingsusers@chestertons.co.uk
02077941125
chestertons.co.uk

Additional tenant charges apply (fees apply to non-AST tenancies only)
Tenancy Agreement Fee: £300
References per Tenant/Guarantor: £60
Inventory check (approx. £100 – £250 inc. VAT)
chestertons.co.uk/property-to-rent/applicable-fees

**Palace Court,
Finchley Road, NW3**



Fourth Floor

Approx Gross Internal Area 2103 Sq Ft - 195.37 Sq M

For Illustration Purposes Only - Not To Scale

www.goldlens.co.uk

Prepared for Chestertons

Ref. No. 001879

