



## Murray Road, TW10

£3,950 Per calendar month

Four bedroom family home in Ham with driveway and garden. The house is presented in excellent condition throughout and has four bedrooms and three receptions including a two story Annexe.

Murray Road is quiet residential street in Ham, close to the open spaces of Richmond Park and Ham Common. Grey Court and the German School are also nearby, and both Richmond and Kingston town centres are a short journey away.

### Features

- Close To Richmond Park
- Popular Local Schools
- Driveway
- Beautifully Presented
- Excellent Reception Space
- Private Garden



## Murray Road, TW10

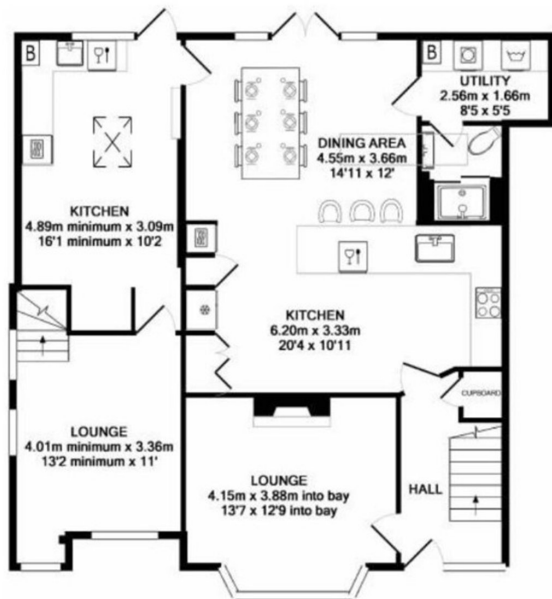
The property offers an Open-plan kitchen and dining area featuring double skylights, a large stone breakfast bar, and premium appliances. Double doors lead to a large back patio with an integrated BBQ, garden, and a powered chalet shed.

The ground floor offers a bright reception room with 1930s bay window, a second reception room with skylights, a third reception room, a modern utility/laundry room, and a walk-in shower with WC.

Upstairs features four well-proportioned bedrooms and three modern shower rooms.



# Murray Road, Richmond, TW10



GROUND FLOOR  
APPROX. FLOOR  
AREA 97.4 SQ.M.  
(1048 SQ.FT.)



1ST FLOOR  
APPROX. FLOOR  
AREA 58.0 SQ.M.  
(625 SQ.FT.)

TOTAL APPROX. FLOOR AREA 155.4 SQ.M. (1673 SQ.FT.)