



13 Fellows Close
Corby, Northants NN17 3LT



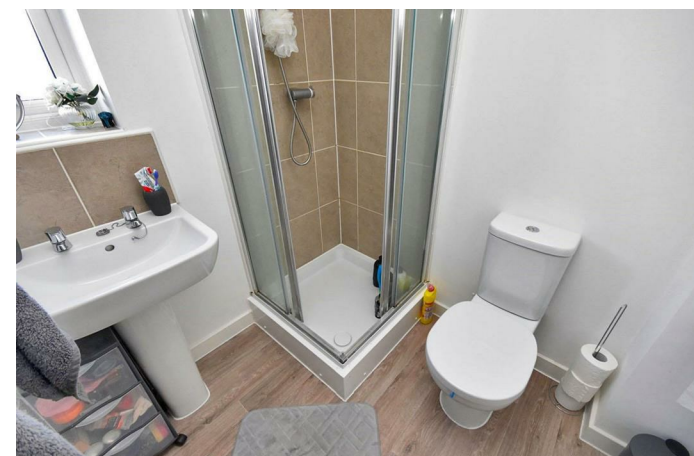
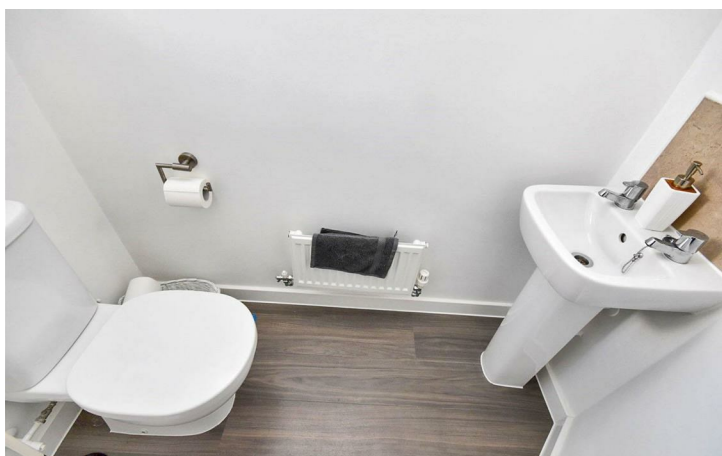
Simpson West

Situated in the highly sought after village of Weldon is this well presented three bedroom semi detached family home which is located on the exclusive Weldon Park development. The property has many features throughout to include entrance hall, downstairs WC, lounge and a kitchen/diner with patio doors leading to the garden. Upstairs there is a master bedroom with an en suite shower room, a second double bedroom, a third single bedroom/study and a family bathroom. To the front of the property there is allocated parking and there is a fully enclosed garden to the rear. Viewing is highly recommended. Energy Rating B. Council tax band C.



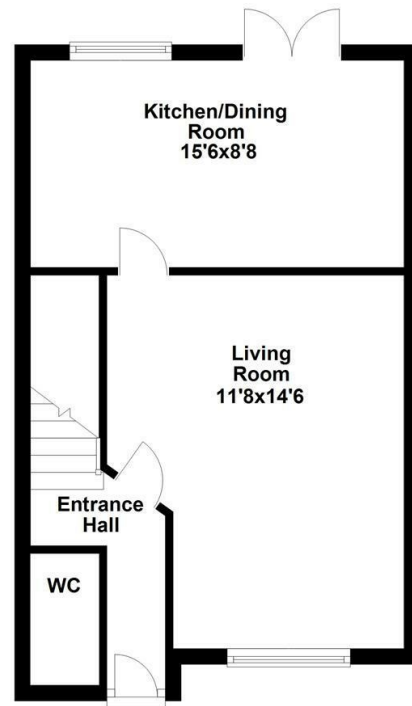
£1,150 PCM

 3  2  1



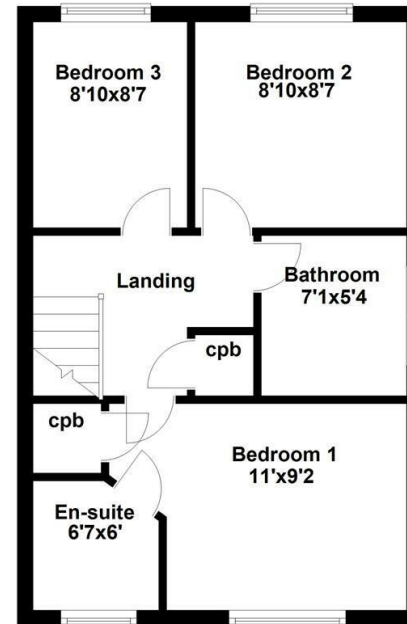
Ground Floor

Approx. 36.1 sq. metres (388.3 sq. feet)




First Floor

Approx. 35.3 sq. metres (379.8 sq. feet)



Floor plan not to scale - for guidance purposes only.
Plan produced using PlanUp.



Energy Efficiency Rating		Current	Potential
<i>Very energy efficient - lower running costs</i>			
(92 plus)	A		96
(81-91)	B	83	
(69-80)	C		
(55-68)	D		
(39-54)	E		
(21-38)	F		
(1-20)	G		
<i>Not energy efficient - higher running costs</i>			
England & Wales		EU Directive 2002/91/EC 	



When you buy with Simpson West, you know **you'll be in safe hands**. From the moment you walk through our doors, we'll make you **feel truly welcome**. Our sales consultants and financial advisors will take you through **every step of the process**, offering **free expert advice** along the way, from help choosing the right mortgage and insurance through to finding your conveyancer. And if you need help selling your home too, **with over 20 years of local experience, you can trust us to get you moving**.



**Simpson
West**

Making Every
Journey Personal



01536 202007

info@simpsonwest.co.uk

<https://www.simpsonwest.co.uk/>

64 Corporation Street, Corby, Northants, NN17 1NH