



Moovahome.co.uk

# Caulfield Road, Swindon, SN2 8BS

£1,300PCM (Deposit: £1,300)

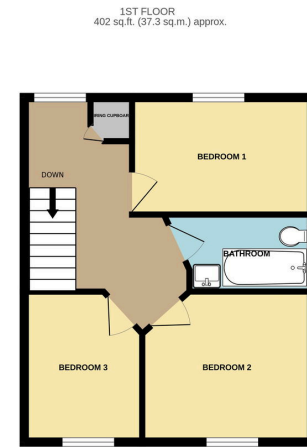
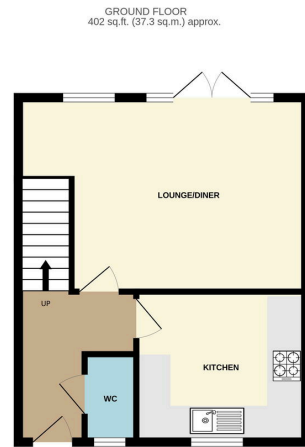
🛏️ 3 🚿 2 🚺 1



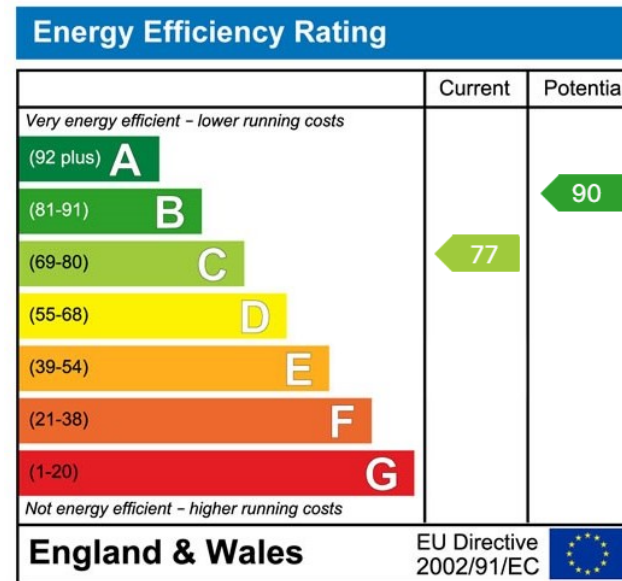
Tax Band: B Furnished: Unfurnished

A three bedroomed end terraced home. The accommodation comprises of entrance hall, open plan living/diner, kitchen, refitted bathroom and three bedrooms. Externally there is an enclosed rear garden and allocated parking for 2 cars. Available immediately.





TOTAL FLOOR AREA: 803 sq.ft. (74.6 sq.m.) approx.  
Whilst every attempt has been made to ensure the accuracy of the floorplan contained here, measurements of doors, windows, rooms and any other items are approximate and no responsibility is taken for any error, omission or mis-statement. This plan is for illustrative purposes only and should be used as such by any prospective purchaser. The services, systems and appliances shown have not been tested and no guarantee as to their operability or efficiency can be given.  
 Made with Metreplan ©2009.



[www.moovahome.co.uk](http://www.moovahome.co.uk)

Unit 20 Ergo Business Park, Kelvin Road, Swindon SN3 3JW

Telephone 01793 512345

[hello@moovahome.co.uk](mailto:hello@moovahome.co.uk)

Lettings: Mr A. Cain T/A Moovahome  
 Moovahome, Unit 20 Ergo Business Park, Kelvin Road, Swindon SN3 3JW

Sales: Moovahome is a trading name of Moovahome Ltd.  
 Registered Office: Unit 20 Ergo Business Park, Kelvin Road, Swindon SN3 3JW