



## Brockley Rise, SE23

£450,000

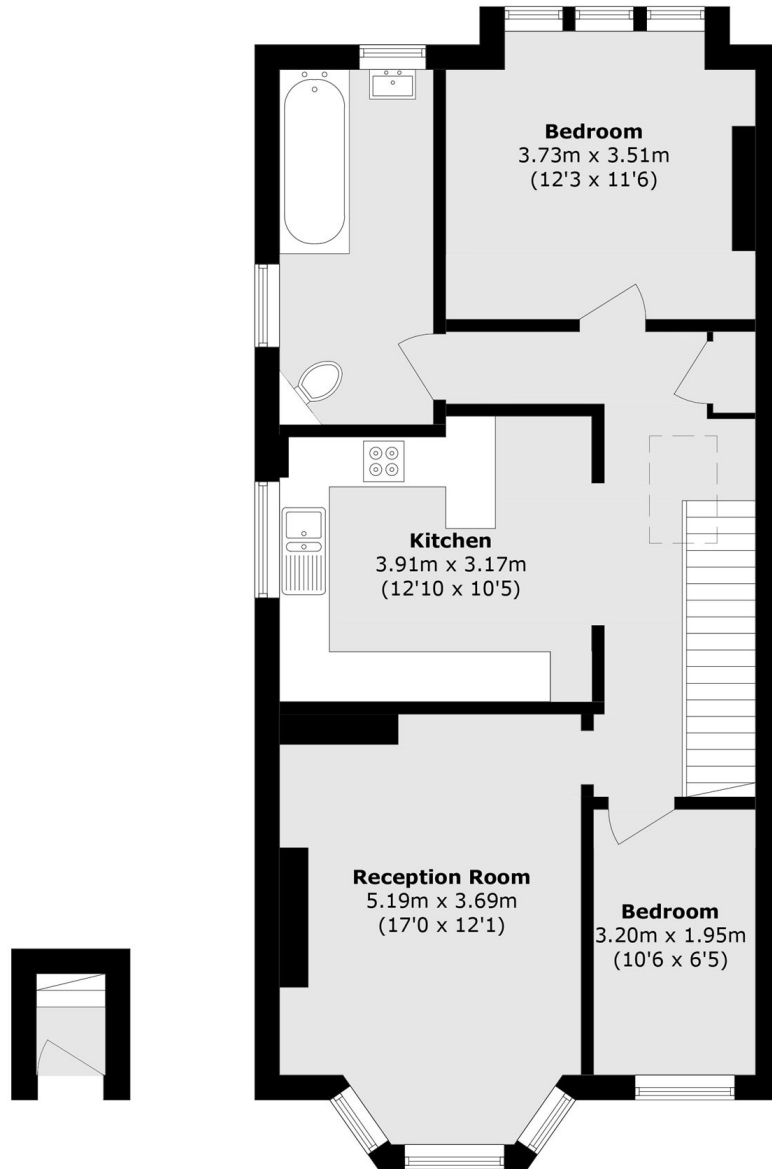
Set within a charming period conversion, this beautifully presented two bedroom flat combines character with modern living, featuring a spacious kitchen/diner and generous accommodation throughout. Additional benefits include a private garden, a long lease, excellent access to nearby stations for convenient commuting, and the added advantage of being offered chain free.

Brockley Rise is close to Crofton Park and Honor Oak Park railway station for convenient transport links in the City. The area offers a selection of independent cafés, restaurants and local shops, with nearby green spaces including Blythe Hill Fields and Hilly Fields.

### Features

- Period Conversion
- Two Bedrooms
- Large Kitchen/Diner
- Private Garden
- Close To Stations
- Chain Free

# Brockley Rise, London, SE23



**Ground Floor**

**First Floor**

Total area (approx.): 73.3 sq. m (789.0 sq. ft)

**Dexters**

Honor Oak  
61 Honor Oak Park  
London  
SE23 1EA

Sales  
020 8291 9556

Energy Rating: C. We aim to make our particulars both accurate and reliable. However they are not guaranteed; nor do they form part of an offer or contract. If you require clarification on any points then please contact us, especially if you're traveling some distance to view. Please note that appliances and heating systems have not been tested and therefore no warranties can be given as to their good working order.

 **RICS** | Regulated  
Estate Agent  
and Letting Agent

[dexters.co.uk](http://dexters.co.uk)