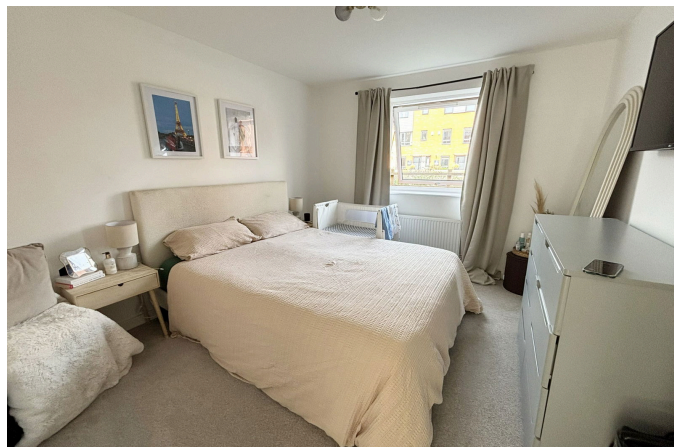


Newman Square, Shirley

£245,000

🛏 2 🚿 2 🛋 1

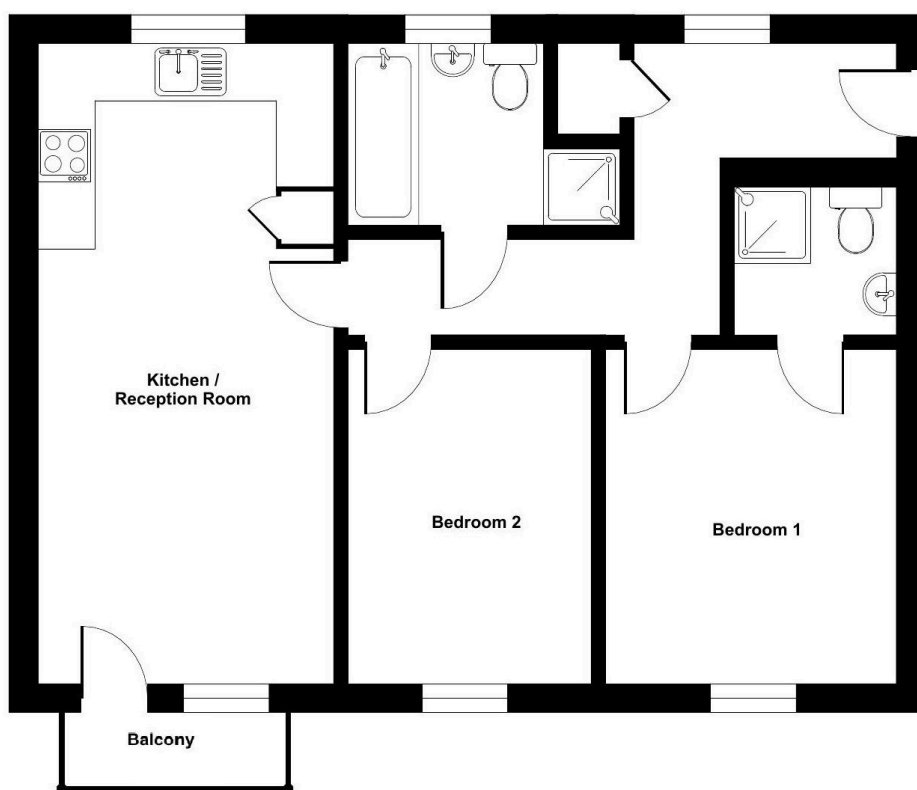


3 Union Road, Shirley, Solihull B90 3BT

sales • new homes • land • commercial • mortgages • auction

Registered Company in England and Wales. Company No 03591917
 Registered Office: smart New Homes Ltd, 3 Union Road, Shirley, Solihull B90 3BT

- A Spacious Recently Constructed Ground Floor Apartment
- Two Double Bedrooms
- En-Suite Shower Room
- Two Allocated Parking Spaces
- Council Tax Band B
- 45% Shared Ownership
- Open Plan Lounge/Kitchen/Diner
- Four Piece Family Bathroom
- Leasehold
- EPC Rating B



A recently constructed purpose built ground floor apartment benefiting from two double bedrooms, spacious lounge with open plan kitchen and balcony, ensuite shower room, four piece family bathroom, two allocated parking spaces, gas central heating and double glazing

3 Union Road, Shirley, Solihull B90 3BT

sales • new homes • land • commercial • mortgages • auction