



Fursecroft

Brown Street, Marylebone, W1H 5LF

£475 Per Week

An exceptionally large studio apartment on the LOWER GROUND FLOOR of a popular portered building moments walk to Oxford Street and Marble Arch.

This bright flat offers neutral and good furnishing and comprises of:- Entrance Hallway with fitted cupboards, thru into spacious reception/studio, separate fitted kitchen, newly fitted shower/WC.

The property also benefits from having 24 hour porter and communal hot water and part Heating.

The building is close to the world renowned Hyde Park and all central London has to offer.

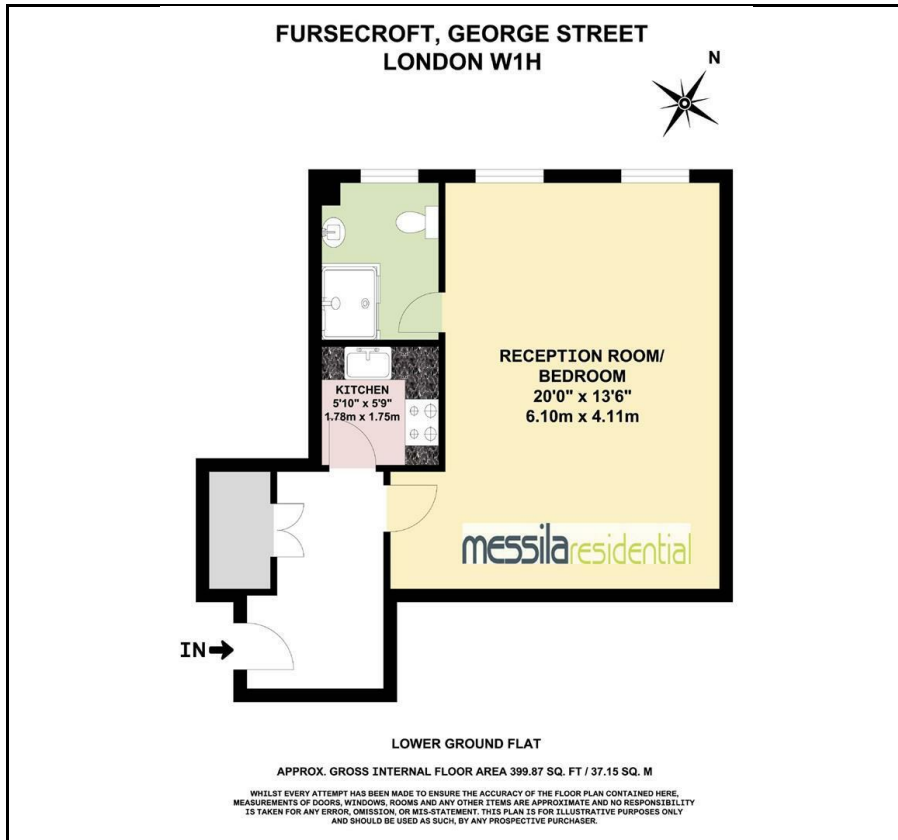
Available from early August.

Viewing

Please contact our Messila Residential Office on 020 7586 6699 if you wish to arrange a viewing appointment for this property or require further information.

- Spacious Studio
- Entrance hall
- Wooden Flooring Throughout
- Ample storage with separate Fitted kitchen
- Communal heating & HW
- Moments Walk to Hyde Park
- Marble Arch and Selfridges

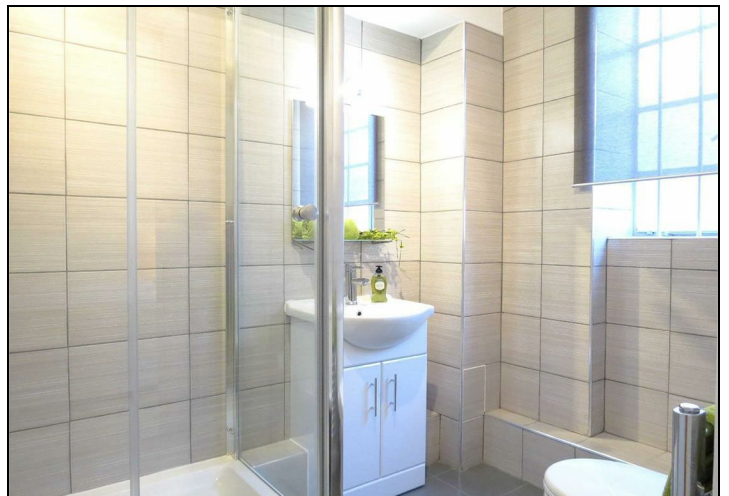
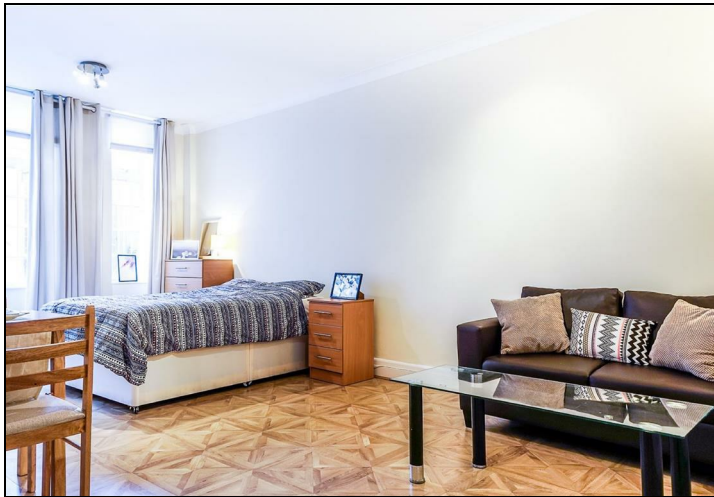
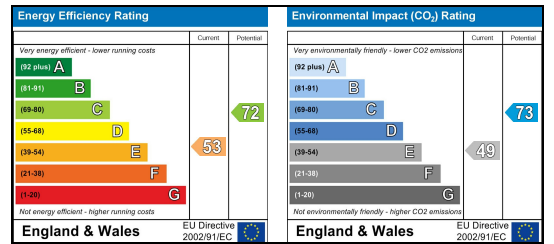
Floor Plan



Area Map



Energy Efficiency Graph



These particulars, whilst believed to be accurate are set out as a general outline only for guidance and do not constitute any part of an offer or contract. Intending purchasers should not rely on them as statements of representation of fact, but must satisfy themselves by inspection or otherwise as to their accuracy. No person in this firm's employment has the authority to make or give any representation or warranty in respect of the property.

Messila Residential

137 Park Road, London, NW8 7HT

T: 020 7586 6699 E: regentspark@messilaresidential.com W: messilaresidential.com