

FREEHOLD



House - Semi-Detached (EPC Rating: D)

60 WENDOVER WAY, WELLING, DA16 2BN

Guide price

£400,000

Westwood
PROPERTY SERVICES



2 Bedroom House - Semi-Detached located in Welling

****Guide Price £400,000 - £425,000**** Ideally situated for Bexley Grammar Schools we offer for sale this lovely two bedroom semi-detached home which offers great potential to extend STPP. Having been extremely well looked after the home comprises entrance hall, bay front living room open to the dining room, extended fitted kitchen, two good size first floor bedrooms and a modern shower room. The stunning rear garden is west facing and extends to in excess of 100ft. Additional points to note include double glazing, gas central heating (Vaillant approx 3 years old), garage and driveway to front with parking for two cars. Offered as chain free an internal viewing is highly advised.

Entrance Hall

Living Room

13' x 9'9

Dining Room

12'11 x 9'11

Kitchen

12'11 x 5'10

Landing

Bedroom One

12'7 x 9'10

Bedroom Two

13'1 x 7'8

Shower Room

West-Facing Rear Garden

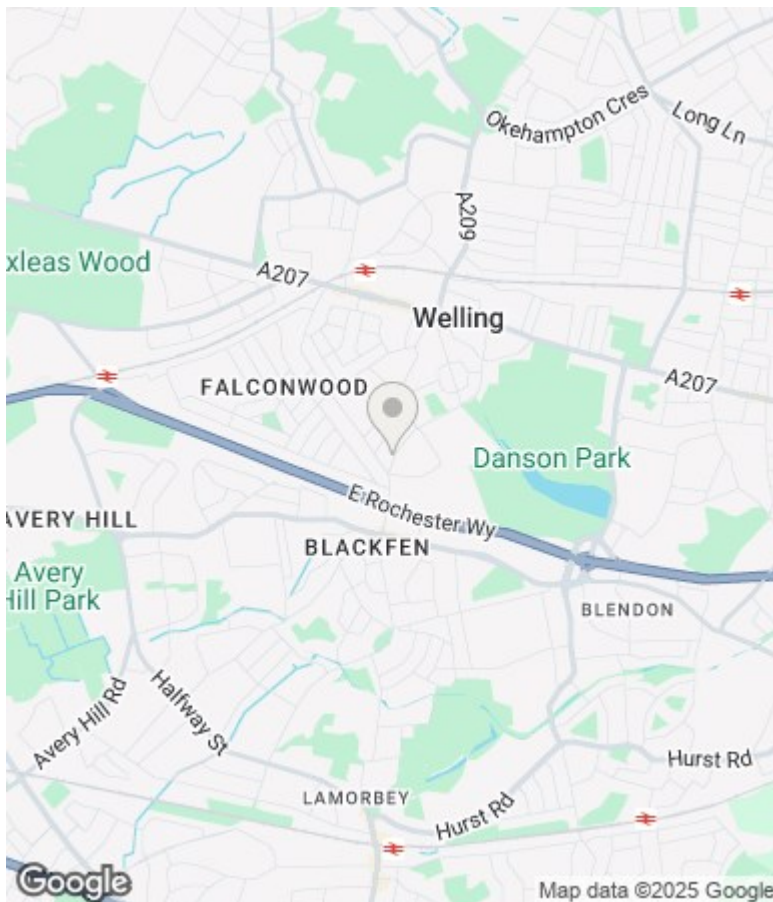
approx 106' x 23'11

Garage

22'8 x 8'6

Front Driveway

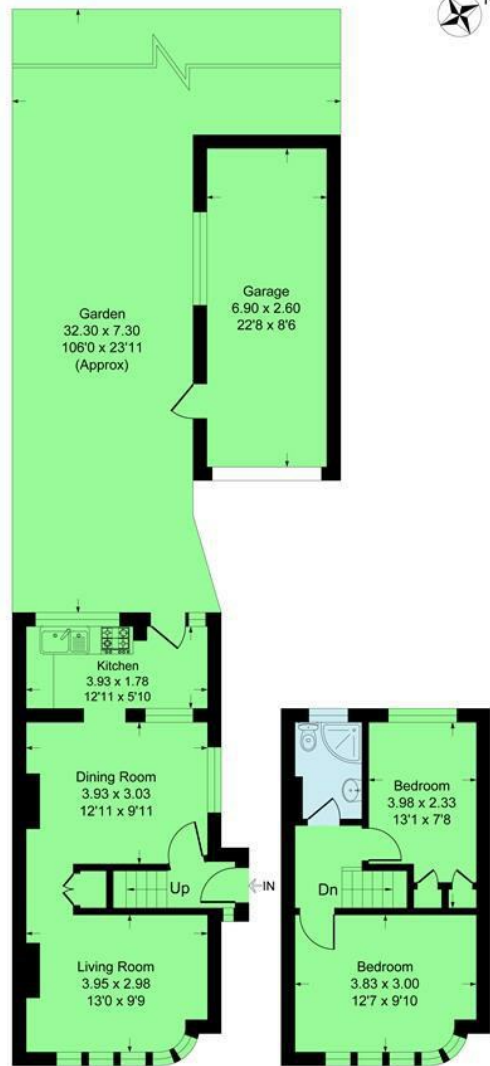




SIDCUP | 2 CENTRAL PARADE SIDCUP, KENT, DA15 7DH

Wendover Way, DA16

Approximate Gross Internal Area 64.1 sq m / 691 sq ft
Garage Area 17.9 sq m / 193 sq ft
Total Area 82.1 sq m / 884 sq ft



Ground Floor

First Floor

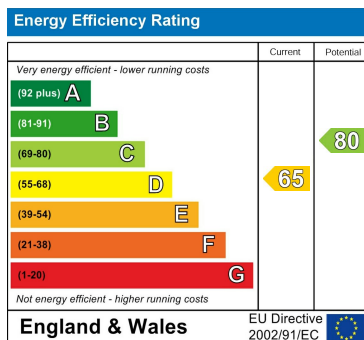
This plan is for layout guidance only. Not drawn to scale unless stated. Windows and door openings are approximate. Whilst every care is taken in the preparation of this plan, please check all dimensions, shapes and compass bearings before making any decisions reliant upon them. Produced By Planpix



Council Tax Band

D

Energy Performance Graph



Call us on

020 8301 5511

sales@westwoodpropertyservices.co.uk

Agents Note: Whilst every care has been taken to prepare these particulars, they are for guidance purposes only. All measurements are approximate and are for general guidance purposes only and whilst every care has been taken to ensure their accuracy, they should not be relied upon and potential buyers are advised to recheck the measurements.