

LEASEHOLD



Apartment (EPC Rating: C)

**123 KILBY ROAD, STEVENAGE, HERTFORDSHIRE,  
SG1 2LU**

**Shared Ownership**

**£75,250**



First Step



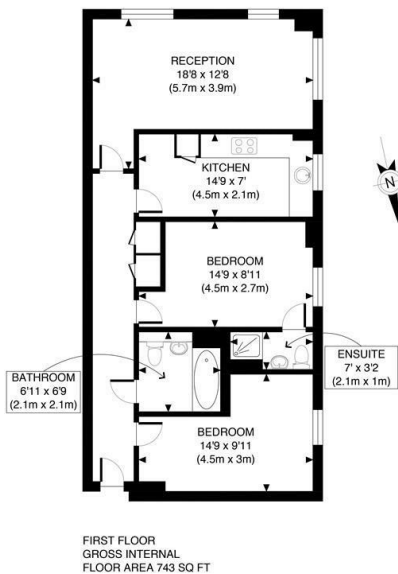
# 2 Bedroom Apartment located in Stevenage

**\*\*SHARED OWNERSHIP\*\*35% SHARE\*\*CHAIN FREE\*\*** Charming apartment located close to both the new town and old town of Stevenage, Hertfordshire. This delightful property boasts a generous 829 square feet of living space, making it an ideal choice for individuals and couples.

The apartment features two well-proportioned bedrooms, including a master suite with an en suite shower room along with an inviting reception room.

One of the standout features of this property is the allocated parking space, along with additional visitor parking, ensuring that you will always have a convenient place to park. The location is particularly appealing, as it is situated close to a leisure park, providing a variety of recreational activities and green spaces for outdoor enjoyment. Furthermore, it is within walking distance to both the train and bus station.

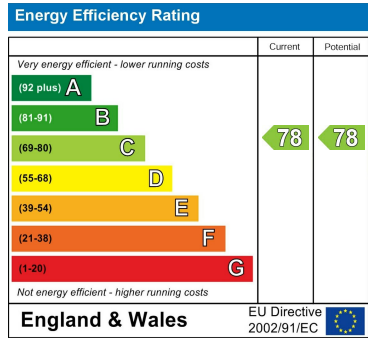
This apartment presents a wonderful opportunity to embrace modern living in a prime location. With its thoughtful layout and desirable amenities, it is sure to attract those looking for a comfortable home.



APPROX. GROSS INTERNAL FLOOR AREA 743 SQ FT / 69 SQM	Kilby Road
Disclaimer: Floor plan measurements are approximate and are for illustrative purposes only. While we do not doubt the floor plan accuracy and completeness, you or your advisors should conduct a careful, independent investigation of the property in respect of monetary valuation	date: 12/12/25
	photoplan

Council Tax Band  
C  
Energy Performance Graph

Call us on  
01462 659 730  
sales@firststep.ltd  
www.firststep.ltd



Agents Note: Whilst every care has been taken to prepare these particulars, they are for guidance purposes only. All measurements are approximate and are for general guidance purposes only and whilst every care has been taken to ensure their accuracy, they should not be relied upon and potential buyers are advised to recheck the measurements.