



Swallow Street
Piccadilly, W1B

CHESTERTONS





A beautifully designed two bedroom two bathroom "loft" style apartment located on the sixth and seventh floors (with lift) of a handsome period building with amazing views across Regent Street.

- Two bedrooms
- Two bathrooms
- Air-conditioning and lift
- Modern fixtures and fittings

£4,000 pcm

Additional tenant charges apply (fees apply to non-AST tenancies only)

Tenancy Agreement Fee: £300

References per Tenant/Guarantor: £60

Inventory check (approx. £100 – £250 inc. VAT)

chestertons.co.uk/property-to-rent/applicable-fees

Energy Efficiency Rating		Current	Potential
95-100	A		
81-95	B		
69-81	C	69	71
55-69	D		
39-55	E		
21-39	F		
1-21	G		

Not energy efficient - higher running costs

England, Scotland & Wales EU Directive 2002/91/EC

Minimum Term: 12 months
Deposit Required: £4,615.38
Local Authority: Westminster
Council Tax Band: G
EPC Rating: C
Furnished

Chestertons Mayfair Lettings

47 South Audley Street

Mayfair

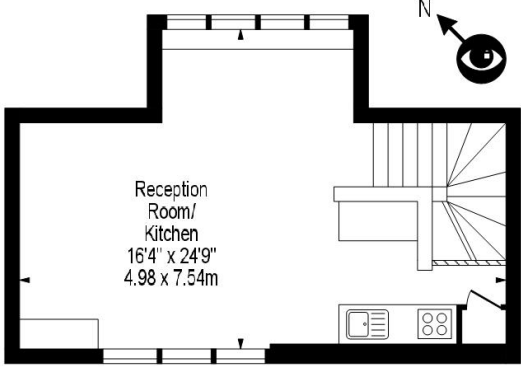
London

W1K 2QA

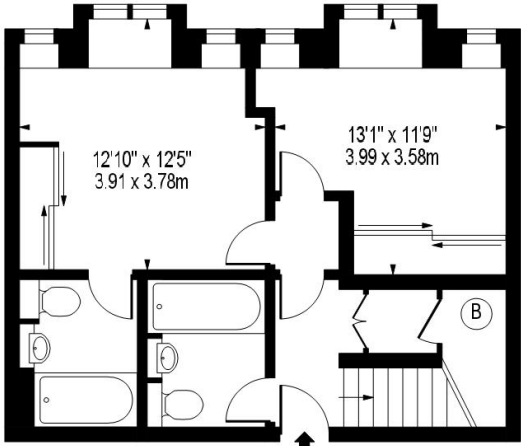
mayfairlettingsusers@chestertons.co.uk

020 7288 8301

Swallow Street, W1B



Sixth Floor



Fifth Floor

Approx Gross Internal Area 809 Sq Ft - 75.16 Sq M

For Illustration Purposes Only - Not To Scale
 Floor Plan by www.bpmmediagroup.com
 Ref. No. P38862

Chesterton UK Services Limited trading as Chestertons for themselves and for the vendor of this property whose agents they are, give notice that (i) these particulars do not constitute any part of an offer or contract, (ii) all statements contained within these particulars are made without responsibility on the part of Chestertons or the vendor, (iii) whilst made in good faith, none of the statements contained within these particulars are to be relied upon as a statement or representation of fact, (iv) any intending purchasers must satisfy themselves by inspection or otherwise as to the correctness of each of the statements contained within these particulars, (v) the vendor does not make or give either Chestertons or any person in their employment any authority to make or give representation or warranty whatsoever in relation to this property. Wide angle lenses may be used. ©Copyright Chestertons | Chesterton Global Ltd | Registered Office 40 Connaught Street, Hyde Park, London W2 2AB Registered Company Number 05334580.

