



## Ridgmount Gardens, WC1E

£800 Per week

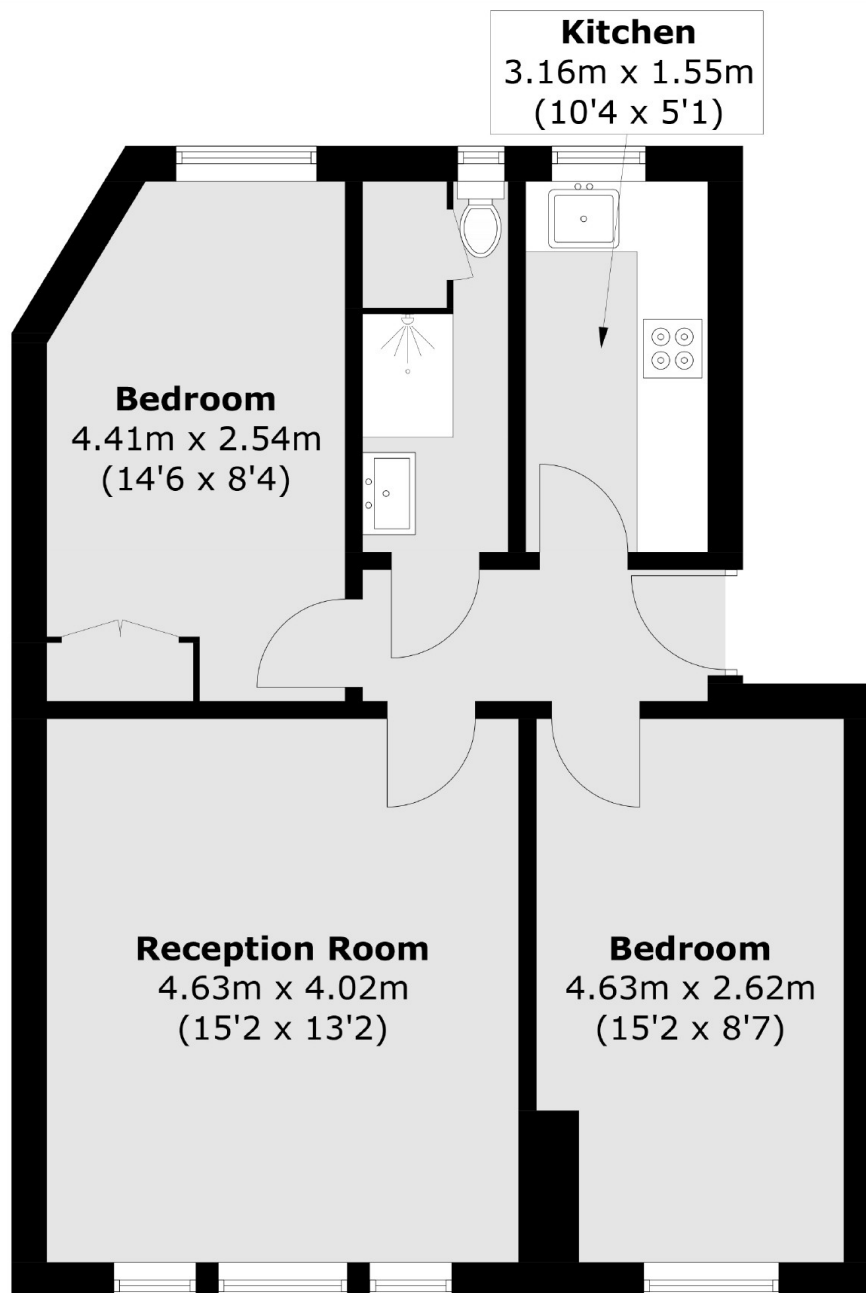
Immaculately presented two bedroom apartment situated on Ridgmount Gardens with a large bright reception room and dining space. The separate kitchen is well equipped and contemporary.

Ridgmount Gardens is a red brick mansions block sandwiched in between Gower Street and Tottenham Court Road. It is ideal for anyone working in the area and also academics studying at UCL which is on the doorstep.

### Features

- Recently Refurbished
- Large Bright Reception Space
- Wood Floors Throughout
- Excellent Block
- Central Location
- Well Presented

# Ridgmount Gardens, London, WC1E



Total area (approx.): 56.8 sq. m (611.4 sq. ft)