



Northdale Common, Wellingborough **Freehold** £260,000

**Pattison
Lane**

Key Features



- Semi-Detached Family Home
- Two Double Sized Bedrooms
- Driveway for Two Vehicles
- Spacious Living / Dining Room
- Downstairs Cloakroom

Presented in pristine condition, this two-bedroom semi-detached property offers a refined living experience within one of Raunds' most sought-after modern enclaves. From the moment you enter the welcoming hallway, the quality of finish is immediately apparent.

Interior Highlights:

- Gourmet Kitchen: A curated space featuring high-spec integrated appliances and ample cabinetry.
- Entertainment Space: An airy lounge/diner flooded with natural light, featuring elegant French doors leading to the rear terrace.
- The Master Suite: A rare find for a semi-detached of this size, the principal bedroom includes a stylish en-suite shower room.



- Accommodation: A second spacious double bedroom and a polished three-piece family bathroom.

Externally, the property continues to impress with a landscaped rear garden and off-road parking for two cars. This is an invitation to effortless living in a highly connected location.

Viewings are highly advised to appreciate all this home has to offer!

The accommodation comprises:

ENTRANCE HALL

CLOAKROOM

KITCHEN 10'2 x 7'11 (3.09m x 2.41m)

LOUNGE / DINING ROOM 15'6 narrowing to 11'9 x 15'8 max (4.72m narrowing to 3.58m x 4.77m)

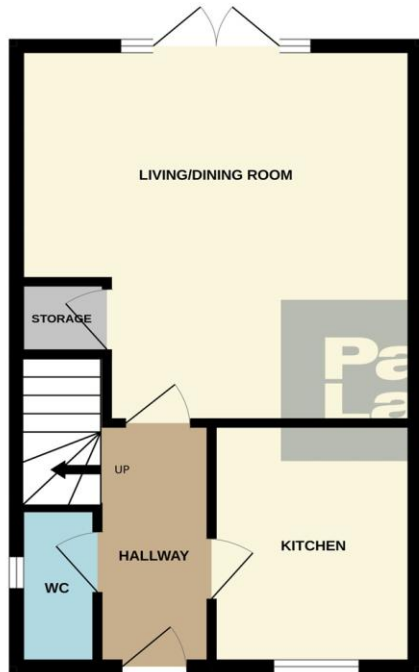
FIRST FLOOR LANDING

BEDROOM ONE 10'9 narrowing to 8'3 x 13'3 max (3.27m x 4.03m)

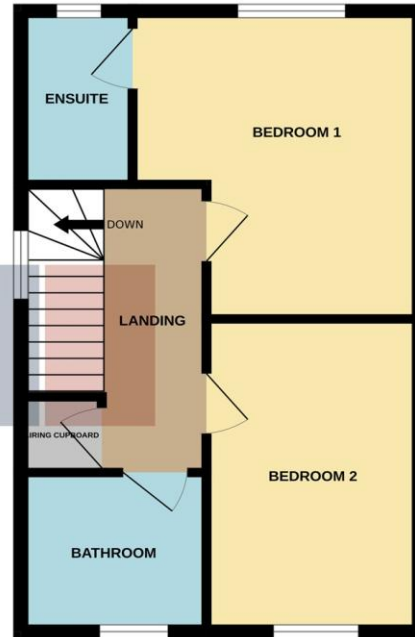
ENSUITE



GROUND FLOOR



1ST FLOOR



Whilst every attempt has been made to ensure the accuracy of the floorplan contained here, measurements of doors, windows, rooms and any other items are approximate and no responsibility is taken for any error, omission or mis-statement. This plan is for illustrative purposes only and should be used as such by any prospective purchaser. The services, systems and appliances shown have not been tested and no guarantee as to their operability or efficiency can be given.
Made with Metropix ©2026

BEDROOM TWO 8'3 x 12'7 (2.51m x 3.83m)

BATHROOM

OUTSIDE

FRONT GARDEN / DRIVEWAY

REAR GARDEN

AGENTS NOTE:

Management Charge - £75.48 every three months

To view this property call Pattison Lane on:
01536 524425

Selling your property?

Contact us to arrange a **FREE** home valuation.

 01536 524425

 68-70 Gold Street, Kettering, Northamptonshire, NN16 8JB

 kettering@pattisonlane.co.uk

 www.pattisonlane.co.uk



 SCAN ME



 SCAN ME



Sharman Quinney Holdings Limited is registered in England and Wales under company number 4174227, Registered Office is Cumbria House, 16-20 Hockliffe Street, Leighton Buzzard, Bedfordshire, LU7 1GN. VAT Registration Number is 500 2481 05.

1: These particulars do not constitute part or all of an offer or contract. 2: The measurements indicated are supplied for guidance only and as such must be considered incorrect. 3: Potential buyers are advised to recheck the measurements before committing to any expense. 4: Sharman Quinney has not tested any apparatus, equipment, fixtures, fittings or services and it is the buyers interests to check the working condition of any appliances. 5: Sharman Quinney has not sought to verify the legal title of the property and buyers must obtain verification from their legal representative. 6: Intending purchasers will be asked to produce identification documentation at a later stage and we would ask your co-operation in order that there will be no delay in agreeing the sale. Ref: KPL206681 - 0001

