

OVER 60?

Secure this property
for up to **59% less!**



Price

£425,000

Freehold

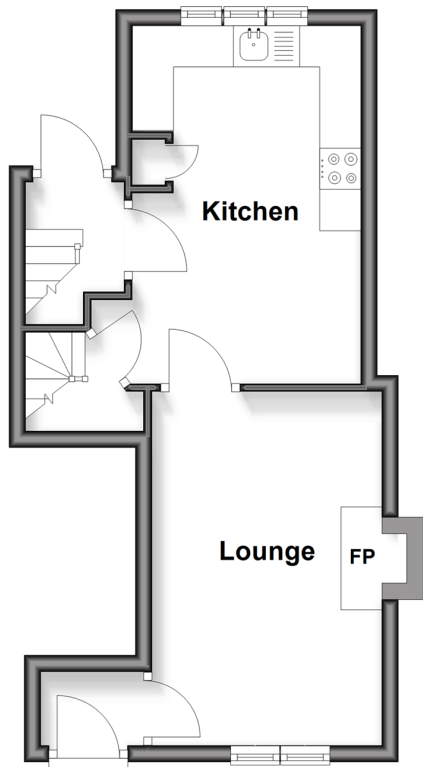
3x  1x  2x 

The Fish Gate, The Street, Offham, Lewes,
East Sussex, BN7

cubitt & west
Helping you move forwards

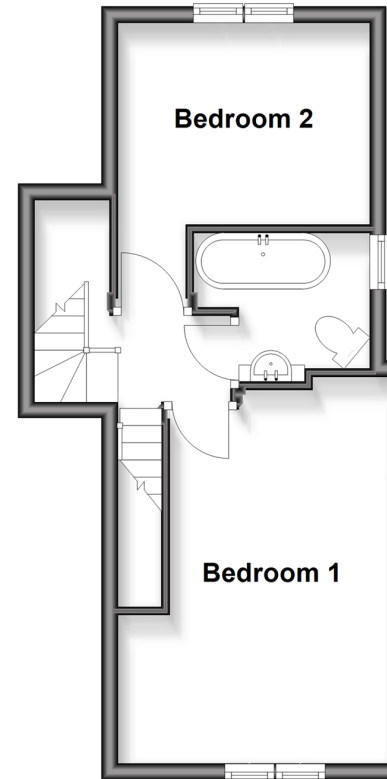
Ground Floor

Approx. 29.7 sq. metres (319.6 sq. feet)



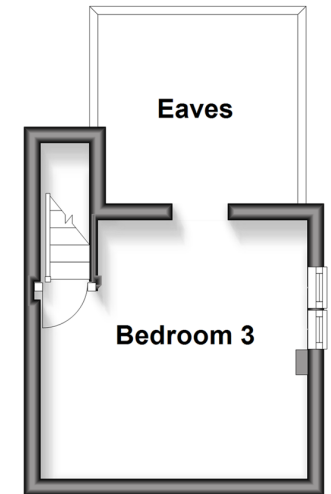
First Floor

Approx. 31.3 sq. metres (336.9 sq. feet)



Second Floor

Approx. 10.8 sq. metres (116.2 sq. feet)



Accommodation

GROUND FLOOR

Porch

Lounge: 14'6 x 9'1 (4.42m x 2.77m)

Kitchen: 14'9 x 9'1 (4.50m x 2.77m)

BASEMENT

Cellar Room: 16'7 x 13'2 (5.06m x 4.02m)

FIRST FLOOR

Landing

Bedroom 1: 14'4 x 10'5 (4.37m x 3.18m)

Bedroom 2: 11'5 x 10'2 (3.48m x 3.10m)

Bathroom

SECOND FLOOR

Bedroom 3: 10'8 x 10'4 (3.25m x 3.15m)

OUTSIDE

Front & Rear Gardens



Main features

- Stunning Grade II Listed property
- Beautiful countryside views to the front and rear
- Pretty garden backing onto farmland
- Full of period character, such as ceiling beams and wooden farmhouse style latch doors
- Parking option may be available under separate negotiation
- Close proximity to both Lewes and Cooksbridge mainline stations with direct links to London

Nearest Schools

Primary Schools: Hamsey Community Primary 0.9 miles, Wallands Community Primary 0.9 miles, Pells C of E Primary 0.9 miles
Secondary Schools: Lewes Old Grammar School 1.5 miles, Priory School 1.9 miles, Owlswick School 2.4 miles

Transport Information

Train Stations: Cooksbridge 0.7 miles, Lewes 1.7 miles, Plumpton 3.2 miles

Address

The Fish Gate, The Street, Offham, Lewes, East Sussex, BN7

Directions

For directions to this property please contact us.



cubitt&west
Helping you move forwards

Call Lewes Branch (01273) 471231 ■ cubittandwest.co.uk



- If buying to let, the energy rating will need to be improved to at least 'E' rating before you can let the property
- Appliances & services are untested, dimensions are approximate and floor plans are not to scale

- Legal advice should be taken to verify fixtures/fittings, planning, alterations and/or lease details
- Through a Homewise Home For Life Plan people aged 60+ can secure this property for up to 59% less, by purchasing a Lifetime Lease