



## Bolton Gardens, SW5

£3,000 Per calendar month

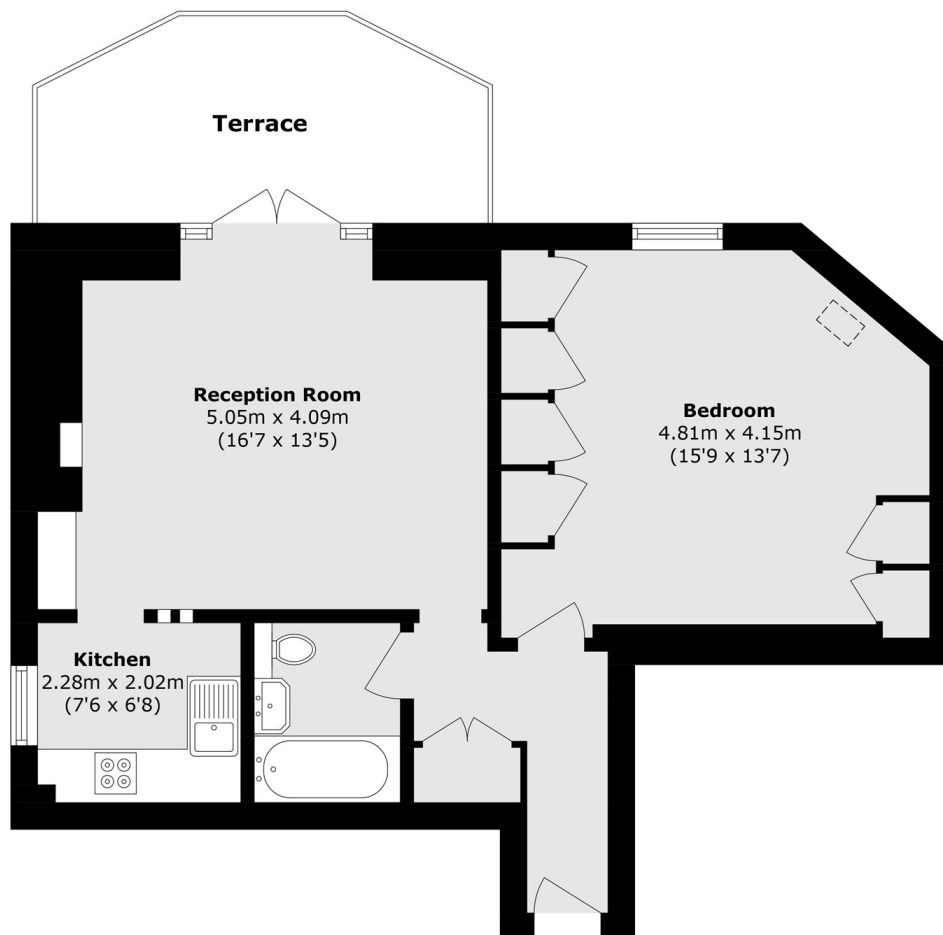
A spacious and bright one bedroom flat with its own private south facing terrace. The flat has wooden floors throughout with lots of built in storage and would be perfect for a couple or single occupant.

The flat is located on the sought after Bolton Gardens which is conveniently located within a short walk of both Earl's Court and Gloucester Road Underground Stations, and benefits from an extensive selection of shops, cafés, restaurants, and supermarkets just moments away.

### Features

- One Bedroom
- One Bathroom
- Private Terrace
- Wooden Floors
- Built In Storage
- Bolton Gardens

# Bolton Gardens, London, SW5



## Third Floor

Total area (approx.): 55.6 sq. m (598.5 sq. ft)  
Terrace Total (approx.): 10.9 sq. m (117.3 sq. ft)