

AVAILABLE



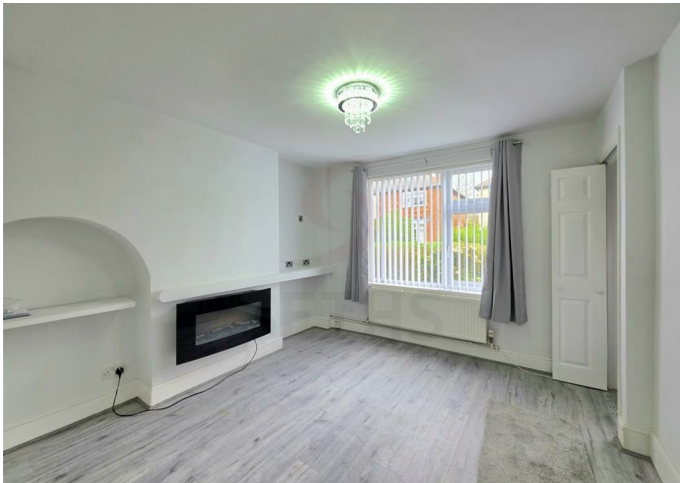
House - Semi-Detached

CROMFORD AVENUE WIGSTON LE18 4LH

£995 Per Month

FEATURES

- Newly Decorated
- Fitted Kitchen
- Rear Garden
- New Carpets
- Lounge
- Conservatory
- Downstairs W.C.
- Fitted Bathroom



 **SETHS**

2 Bedroom House - Semi-Detached located in Wigston

****No Deposit Option Available****

Seths are pleased to present this newly refurbished and beautifully decorated 2 Bedroom Home located on Cromford Avenue in the desirable area of Wigston.

The Front Door opens into a Hallway which provides access to the Lounge, finished to a modern standard and offering a comfortable living space.

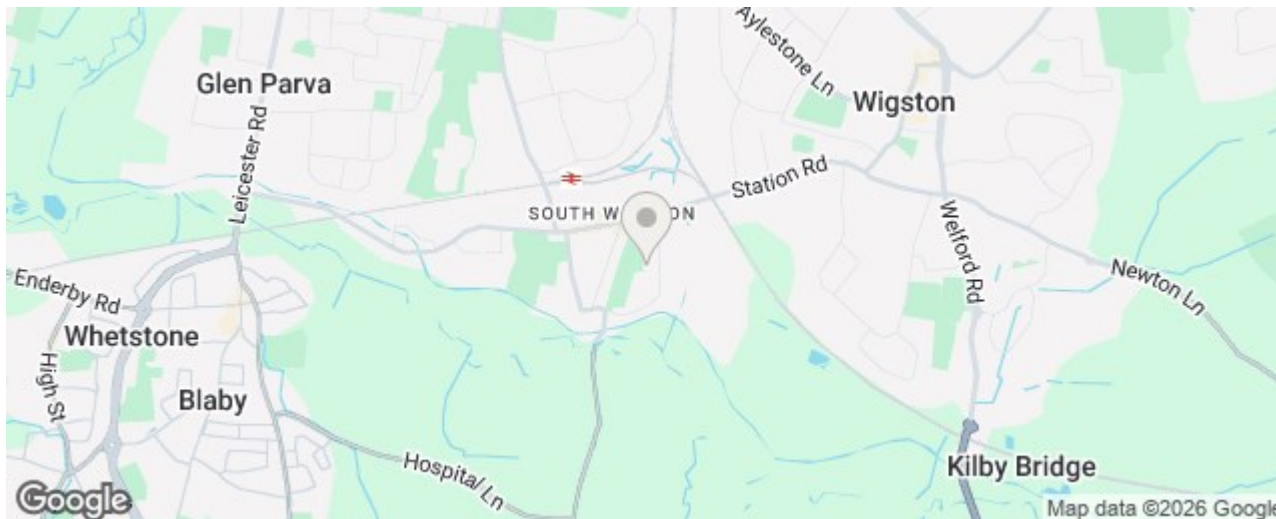
From the Lounge there is access to a contemporary Fitted Kitchen/Dining Area, comprising fitted Wall and Base Units with Worktop Over and a Sink. The Kitchen leads through to a well presented Conservatory, providing additional living space and overlooking the Rear Garden.

On the First Floor there are 2 well proportioned Bedrooms, all newly decorated and finished to a high standard. There is also a stylish Family Bathroom inclusive of a Bath, Wash Basin and W.C.

Externally, the property benefits from a well maintained Rear Garden.

The property is conveniently located close to local Schools and close to the main Tesco in Wigston.

Further benefits include Double Glazing and Gas Central Heating. This property has been recently refurbished throughout, offering modern and comfortable living, ideal for professionals or small families.



Call us on

0116 266 9977

let@seths.co.uk

www.seths.co.uk

Council Tax Band

A

Energy Efficiency Rating

	Current	Potential
Very energy efficient - lower running costs		
(92 plus) A		92
(81-91) B		
(69-80) C	75	
(55-68) D		
(39-54) E		
(21-38) F		
(1-20) G		
Not energy efficient - higher running costs		
England & Wales	EU Directive 2002/91/EC	

Agents Note: Whilst every care has been taken to prepare these particulars, they are for guidance purposes only. All measurements are approximate and are for general guidance purposes only and whilst every care has been taken to ensure their accuracy, they should not be relied upon and potential buyers are advised to recheck the measurements.

