



Barge Walk, Greenwich, London SE10 0UG

 **1 Bedroom**

 **1 Bathroom**

 **1 Reception Room**



# Barge Walk, Greenwich SE10

Leasehold (116 years remaining)

A contemporary apartment in Greenwich's sought-after Barge Walk development, featuring a large private balcony with elevated views. Perfectly positioned in North Greenwich moments from North Greenwich underground (Jubilee Line).

## Key Features

- One Bedroom, One Bathroom
- Riverside development
- 6th Floor
- Council Tax: **C**
- Service Charge: **£2,600 P/A**
- Ground Rent: **£100 P/A**
- Excellent transport links
- EPC: **B**



This thoughtfully designed apartment benefits from elevated positioning, ensuring excellent natural light throughout and a peaceful retreat from street level. The generous private balcony provides an ideal outdoor sanctuary for morning coffee or evening relaxation, offering an extension to the living space that enhances the property's appeal throughout the seasons. There is a good sized double bedroom and a family bathroom which finishes off the property.

The development is located a short walk from North Greenwich tube station (Jubilee Line), the Emirates Cable Cars and the O2 with the many attractions within, including bars and restaurants. It is also within walking distance to Sainsburys, Aldi, Asda and Ikea. The development is also home to an excellent primary school, nursery and Eco park. Further benefits include a parking space, 24 hour concierge, excellent transport links and located moments from the O2 Arena.



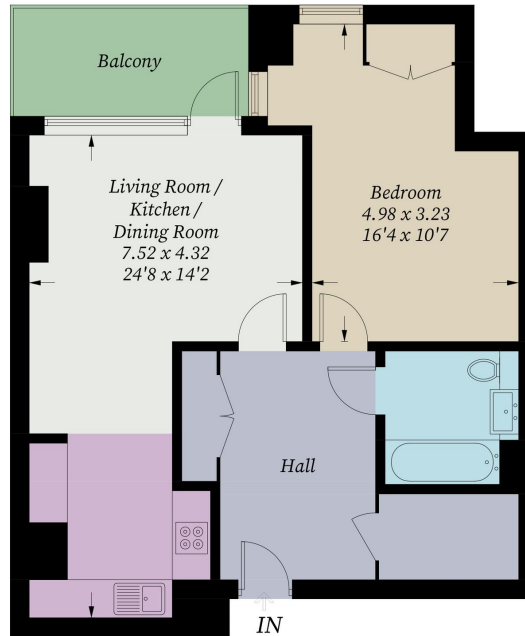






## Barge Walk, SE10

Approximate Gross Internal Area = 60.8 sq m / 654 sq ft



### Sixth Floor

Illustration for identification purposes only, measurements are approximate, not to scale. Fourlabs.co © (ID1310577)