



## Bicester Road, TW9

£2,750 Per calendar month

This spacious and well presented three bedroom family house boasts large through reception room with living and dining area, further second reception room, modern eat-in kitchen, family bathroom and landscaped rear garden.

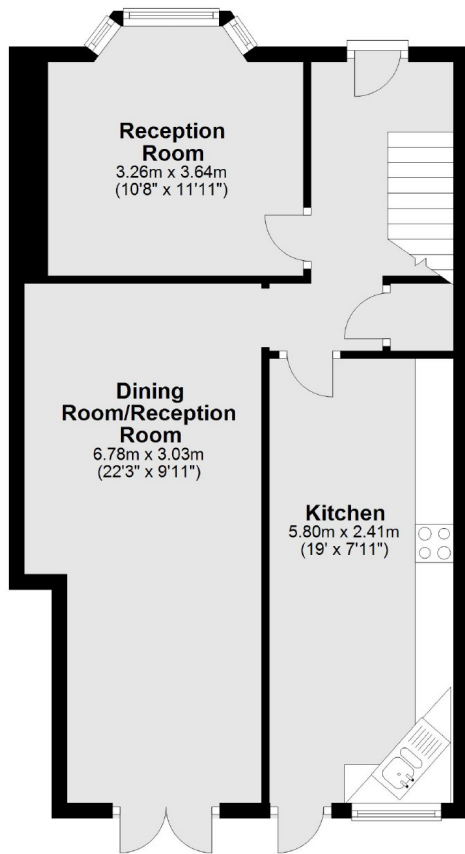
In a quiet residential road close to local amenities, great schools and is less than a quarter of a mile from North Sheen train station.

### Features

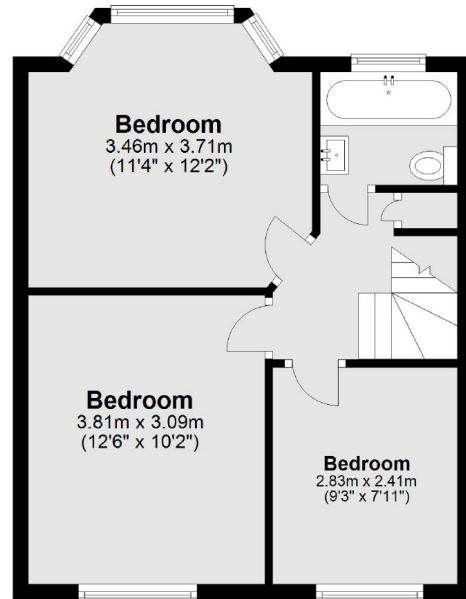
- Three Bedroom
- Semi Detached
- Family Home
- Wooden Floors
- Two Reception Rooms
- Eat In Kitchen

# Bicester Road, , TW9

Ground Floor



First Floor



Total area: approx. 92.2 sq. metres (991.9 sq. feet)