



Connells

Kelly Court Coxford Road
Southampton

Kelly Court Coxford Road
Southampton SO16 5PG

for sale offers in excess of
£140,000



Property Description

Tucked away in a quiet and private setting within the highly sought-after area of Lordswood, this well-presented one-bedroom apartment occupies a second-floor position and offers an excellent opportunity for buyers.

Conveniently located, the property sits within easy reach of local amenities, reputable schools, and Southampton General Hospital, while also benefiting from good public transport links for easy access into the city.

Whether you're taking your first step onto the property ladder or looking for a smart investment, this apartment combines location, comfort, and practicality – making it a must-see.

Access

Ground floor level main door accessed via security system. Opening up to communal hallway and stairs raising to second floor level

Entrance Hall

Lounge

13' 5" x 10' 9" (4.09m x 3.28m)

Kitchen

10' 10" x 6' 4" (3.30m x 1.93m)

Double glazed window to side aspect. Wall and base units. Roll top work surfaces

Bedroom

11' 8" x 10' 2" (3.56m x 3.10m)

Double glazed window to rear aspect.

Storage heater. Television point. Textured ceiling. Power points.

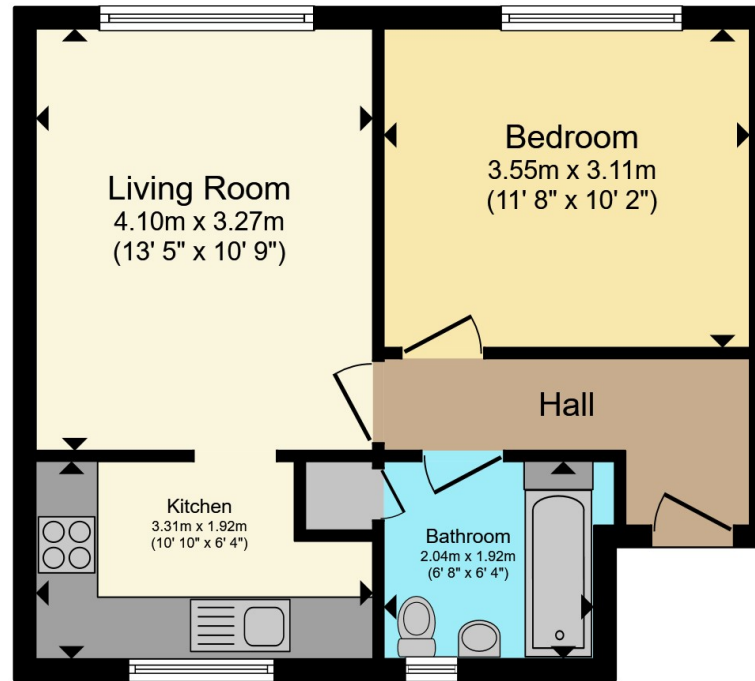
Bathroom

Double glazed window to side aspect. Three piece matching suite comprising Panel bath with shower over.









Second Floor

Total floor area 40.4 m² (435 sq.ft.) approx

This floor plan is for illustrative purposes only. It is not drawn to scale. Any measurements, floor areas (including any total floor area), openings and orientation are approximate. No details are guaranteed, they cannot be relied upon for any purpose and they do not form part of any agreement. No liability is taken for any error, omission or misstatement. A party must rely upon its own inspection(s). Powered by www.propertybox.io

Connells

To view this property please contact Connells on

T 02380 789 351
E shirley@connells.co.uk

409 Shirley Road Shirley
 SOUTHAMPTON SO15 3JD

EPC Rating: E Council Tax
 Band: A

Service Charge:
 2400.00

Ground Rent:
 Ask Agent

Tenure: Leasehold

view this property online connells.co.uk/Property/SSR308874

This is a Leasehold property with details as follows; Term of Lease 999 years from 24 Jun 1986. Should you require further information please contact the branch. Please Note additional fees could be incurred for items such as

1. MONEY LAUNDERING REGULATIONS Intending purchasers will be asked to produce identification documentation at a later stage and we would ask for your co-operation in order that there will be no delay in agreeing the sale. 2. These particulars do not constitute part or all of an offer or contract. 3. The measurements indicated are supplied for guidance only and as such must be considered incorrect. Potential buyers are advised to recheck measurements before committing to any expense. 4. We have not tested any apparatus, equipment, fixtures, fittings or services and it is in the buyers interest to check the working condition of any appliances.

Connells Residential is registered in England and Wales under company number 1489613, Registered Office is Cumbria House, 16-20 Hockliffe Street, Leighton Buzzard, Bedfordshire, LU7 1GN. VAT Registration Number is 500 2481 05.



See all our properties at www.connells.co.uk | www.rightmove.co.uk | www.zoopla.co.uk

Property Ref: SSR308874 - 0003