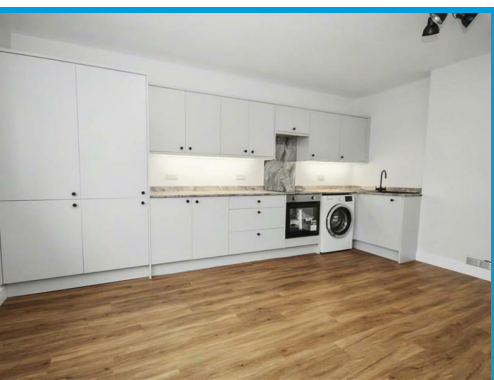




Worplesdon Road, Guildford Surrey, GU2 9XA

£1,575 PCM

A stunning two bedroom maisonette located close to local shops and within easy access to Guildford town centre, Surrey Business Park and the A3.



Description

Having been completely refurbished throughout, this stunning two bedroom maisonette offers beautifully presented accommodation in a highly convenient location.

The property has its own private entrance with a hallway ideal for coats and shoes and stairs leading to the first floor.

The first floor comprises a lounge with open plan kitchen with appliances, a large double bedroom, a further bedroom and a bathroom with shower.

There are local shops, restaurants and take aways close by and Guildford Business Park is within a very short distance. Guildford town centre and station can be easily accessed by the excellent bus route that runs past the property.

