



Viadux, 42 Great Bridgewater Street, Manchester, M1 5LP

£380 Per Week

‘THE VIADUX’ GREAT BRIDGEWATER STREET M1

1 BEDROOM APARTMENT ON THE 21ST FLOOR

HOTEL STYLE AMENITIES INC: RESIDENTS POOL, GYM, SPA, LOUNGE, BAR, WORKSPACES, CINEMA & EVEN A KARAOKE ROOM!

GREAT VIEWS

FURNISHED

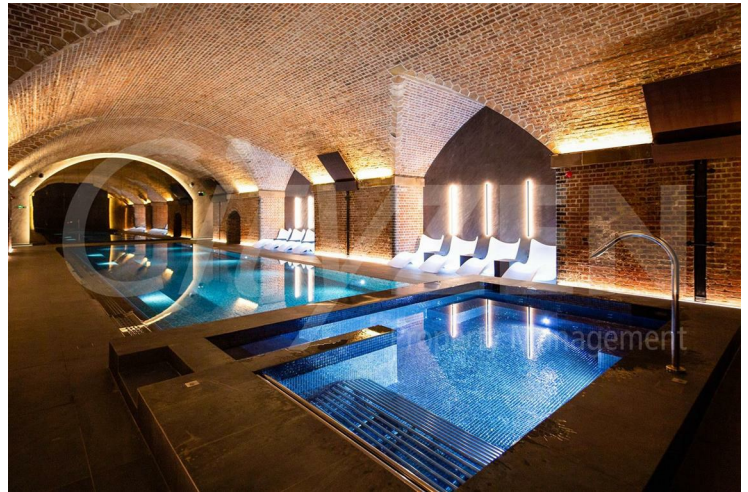
AVAILABLE FROM 29.06.2026

- THE VIADUX
- HOTEL STYLE FACILITIES INC POOL, GYM, CINEMA, CONCIERGE
- 21ST FLOOR
- ONE OF THE MOST LUXURIOUS BUILDINGS IN MANCHESTER
- 1 BEDROOM APARTMENT FOR RENT
- DIRECT ACCESS TO METROLINK
- FURNISHED
- AVAILABLE FROM 29.06.2026
- VIEWS ACROSS CITY CENTRE SKYLINE
- STUDENTS OR PROFESSIONALS WELCOME

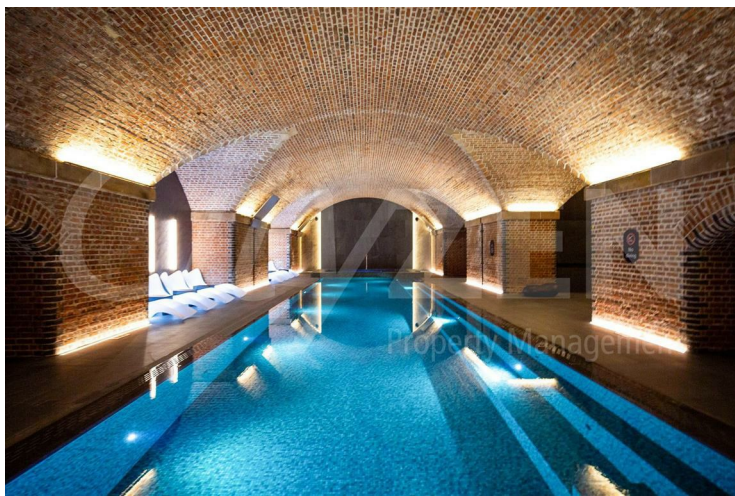
Viadux, 42 Great Bridgewater Street, Manchester, M1 5LP



THE VIADUX



RESIDENTS POOL



RESIDENTS POOL



RESIDENTS SPA



RESIDENTS POOL



RESIDENTS LOUNGE

Viadux, 42 Great Bridgewater Street, Manchester, M1 5LP



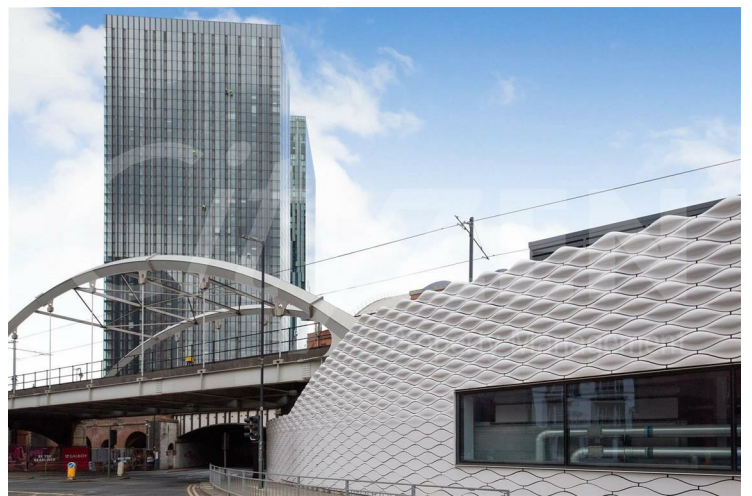
RESIDENTS GAMES ROOM



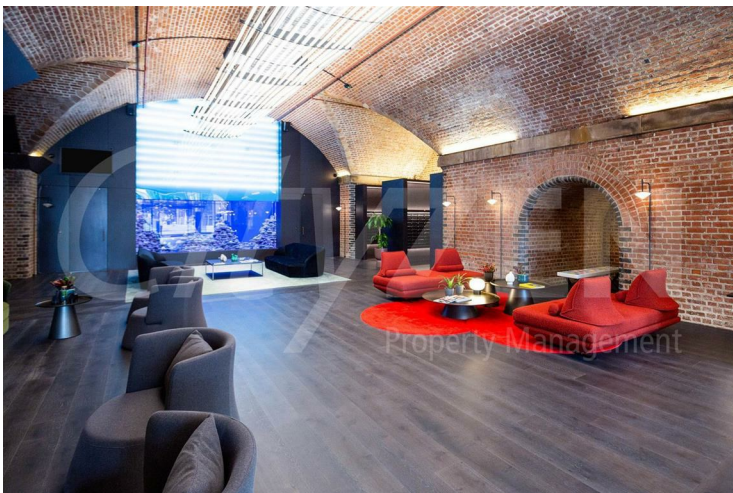
RESIDENTS BAR/KARAOKE ROOM



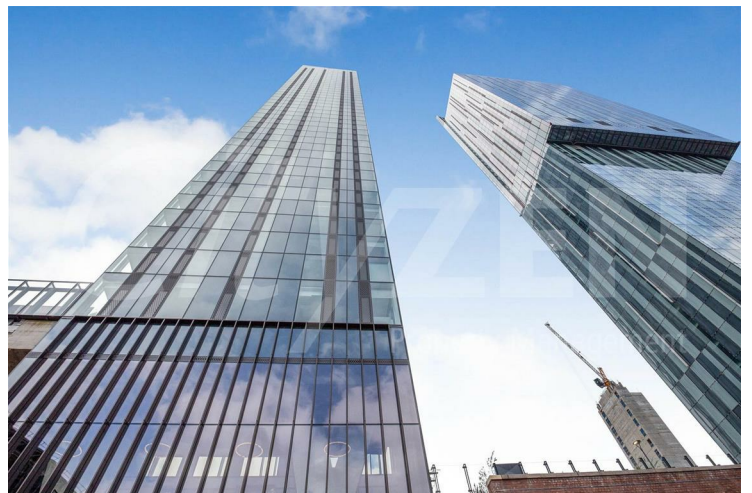
RESIDENTS SCREENING ROOM



THE VIADUX



RESIDENTS LOUNGE



THE VIADUX

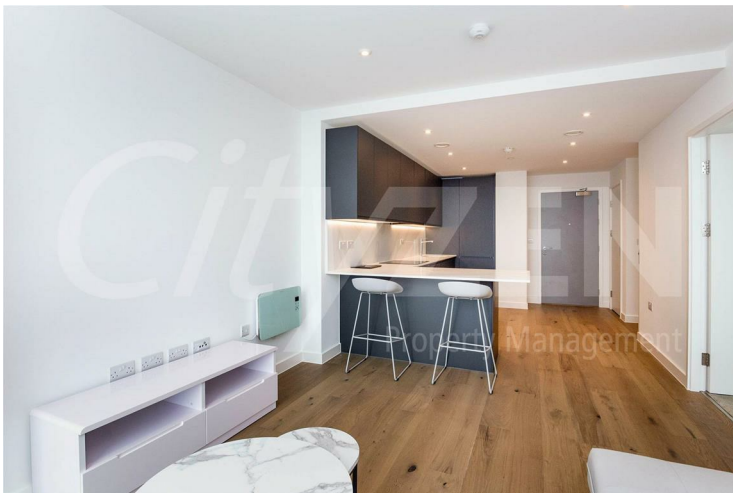
Viadux, 42 Great Bridgewater Street, Manchester, M1 5LP



RECEPTION



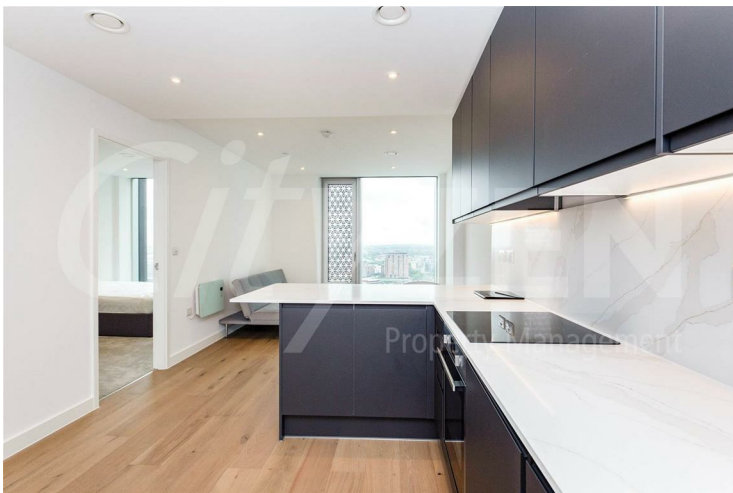
KITCHEN



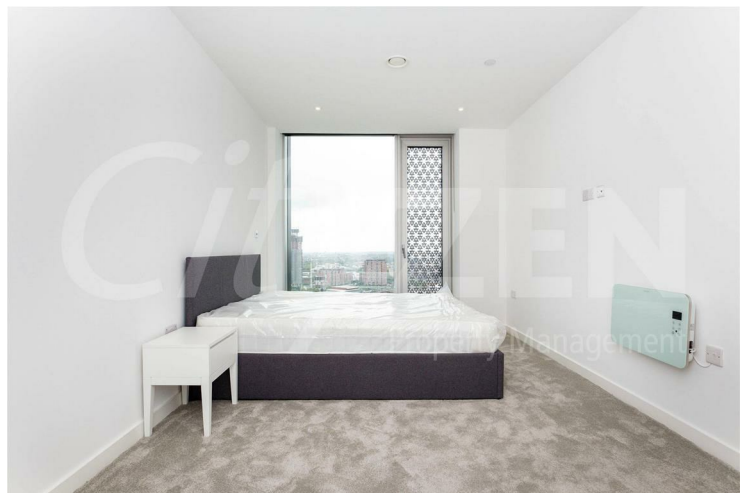
RECEPTION



KITCHEN

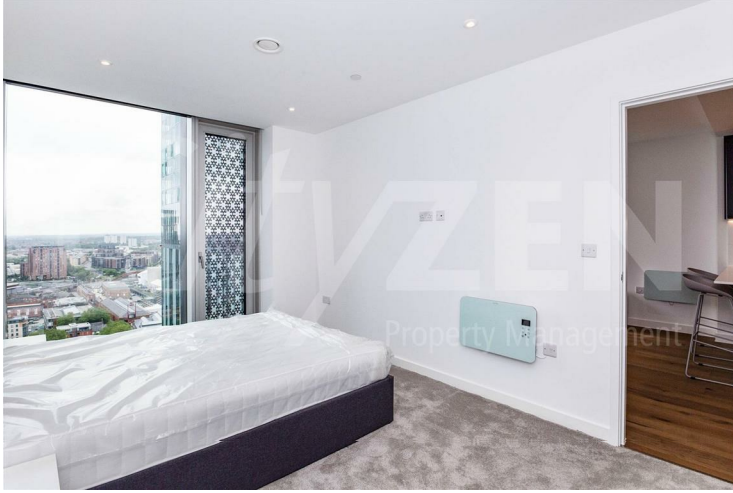


KITCHEN



BEDROOM

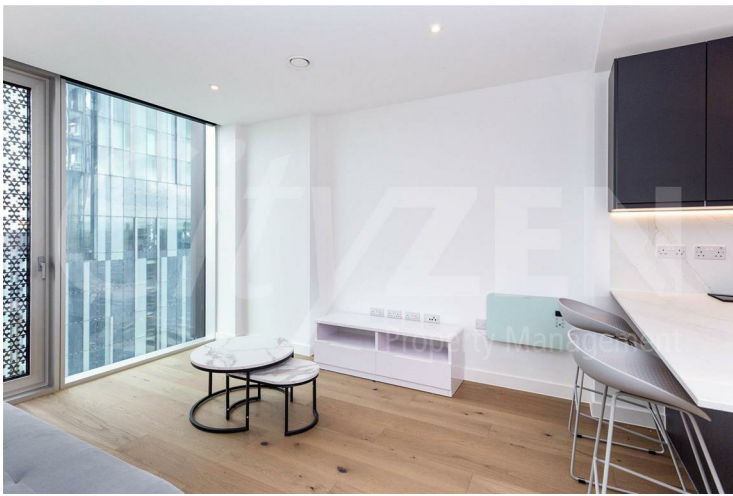
Viadux, 42 Great Bridgewater Street, Manchester, M1 5LP



BEDROOM



KITCHEN



RECEPTION



KITCHEN



BEDROOM



VIEW

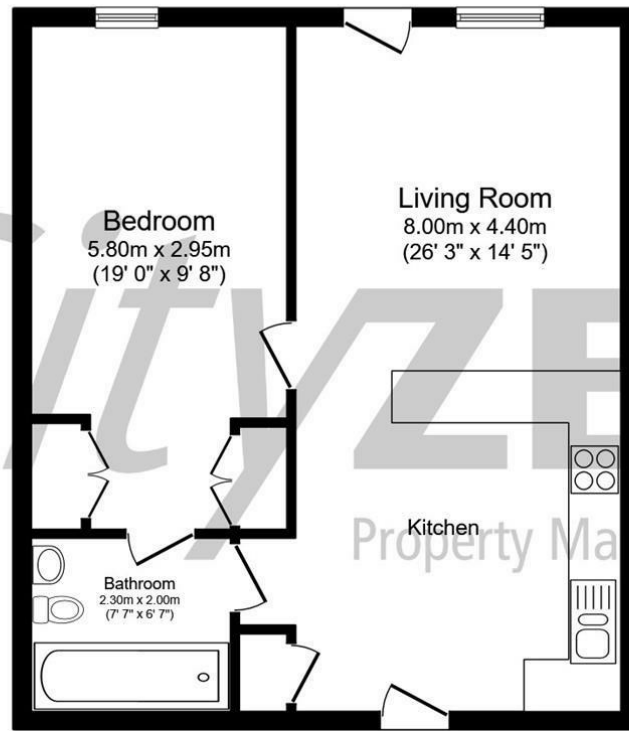
Viadux, 42 Great Bridgewater Street, Manchester, M1 5LP



BATHROOM



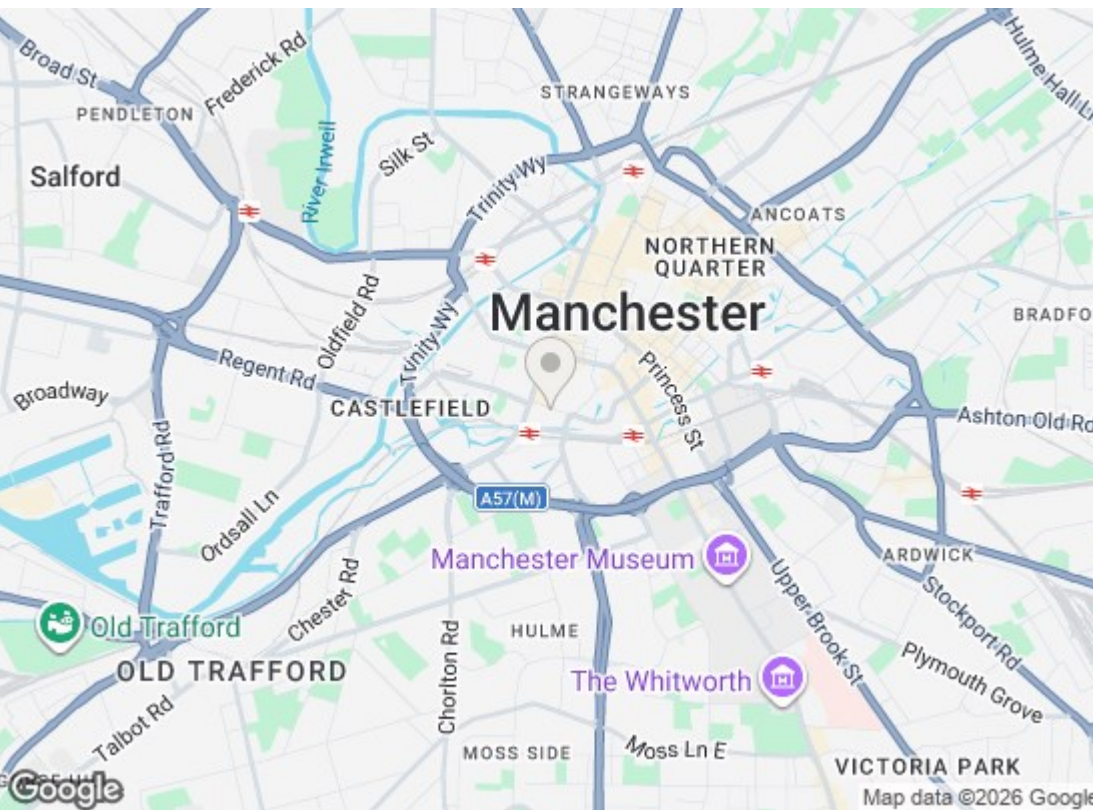
RECEPTION



Floor Plan

Total floor area 53.7 sq.m. (578 sq.ft.) approx

This floor plan is for illustrative purposes only. It is not drawn to scale. Any measurements, floor areas (including any total floor area), openings and orientation are approximate. No details are guaranteed, they cannot be relied upon for any purpose and they do not form part of any agreement. No liability is taken for any error, omission or misstatement. A party must rely upon its own inspection(s). Powered by www.focalagent.com



Energy Efficiency Rating		
	Current	Potential
Very energy efficient - lower running costs		
(92 plus) A		
(81-91) B	85	85
(69-80) C		
(55-68) D		
(39-54) E		
(21-38) F		
(1-20) G		
Not energy efficient - higher running costs		
EU Directive 2002/91/EC		
England & Wales		
Environmental Impact (CO ₂) Rating		
	Current	Potential
Very environmentally friendly - lower CO ₂ emissions		
(92 plus) A		
(81-91) B		
(69-80) C		
(55-68) D		
(39-54) E		
(21-38) F		
(1-20) G		
Not environmentally friendly - higher CO ₂ emissions		
EU Directive 2002/91/EC		
England & Wales		

We have prepared these property particulars as a general guide to a broad description of the property. They are not intended to constitute part of an offer or contract. We have not carried out a structural survey and the services, appliances and specific fittings have not been tested. All photographs, measurements, floorplans and distances referred to are given as a guide only and should not be relied upon for the purchase of carpets or any other fixtures or fittings. Lease details, service charges and ground rent (where applicable) and council tax are given as a guide only and should be checked and confirmed by your Solicitor prior to exchange of contracts.