



## Surbiton Hill Park, KT5

£314,950

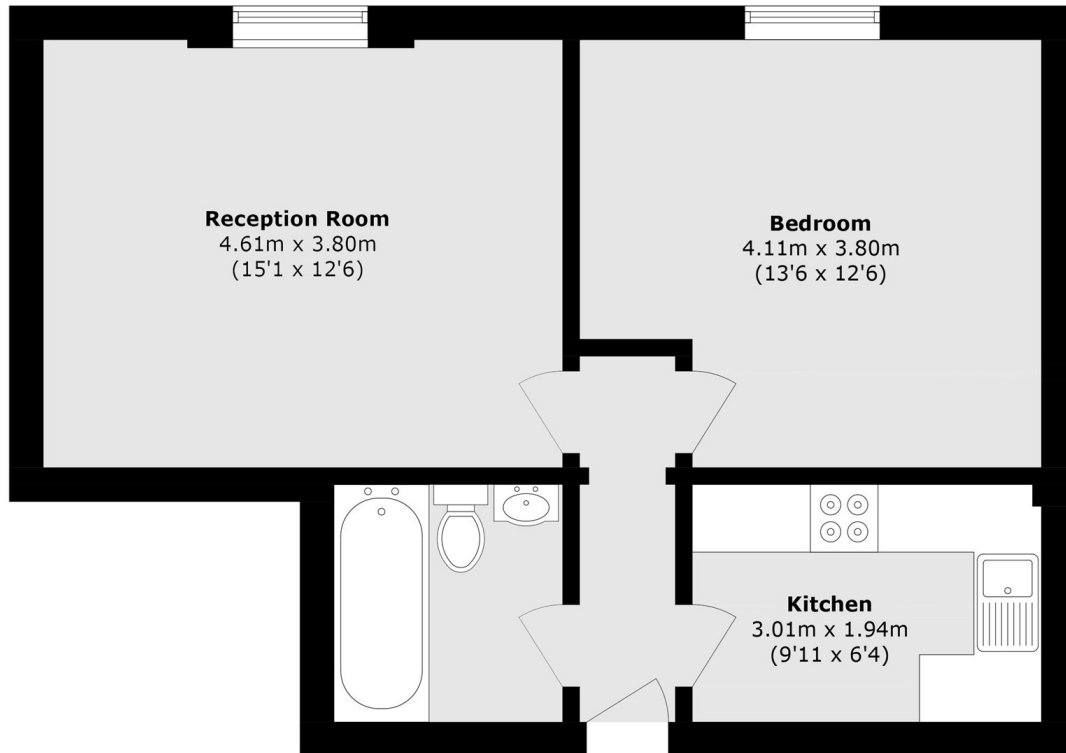
A stylish and characterful one bedroom flat set within an attractive period building, offering generous proportions, high ceilings and a standout open-plan living space.

Surbiton Hill Park is approximately half a mile away from Surbiton town centre, where you will find the mainline train station with quick links to London and a vast selection of local shops, bars and restaurants.

### Features

- One Bedroom
- Top Floor Flat
- Period Property
- Great Location
- New Lease Upon Completion
- Parking

# Surbiton Hill Park, Surbiton, KT5



Total area (approx.): 45.8 sq. m (492.9 sq. ft)