



SCAN ME

43 Lovage Road, Whiteley, Fareham, Hampshire, PO15 7NE.



For more information

01489 570019

www.sbk4homes.com

43 Lovage Road,

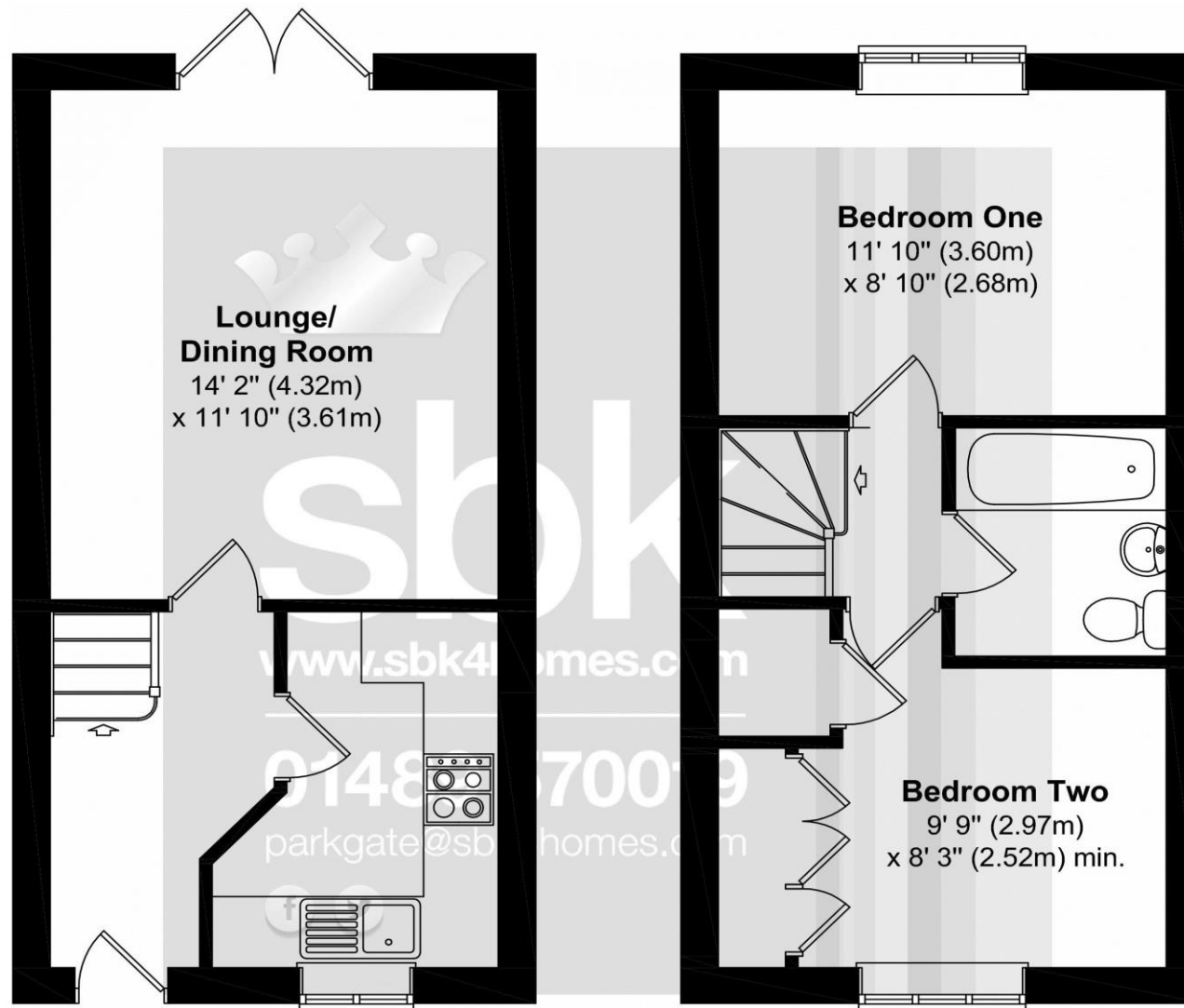
Whiteley, Fareham, PO15 7NE.

£1,295 PCM

- Two Double Bedroom House
- Newly Decorated Throughout
- BRAND NEW KITCHEN BEING FITTED
- Lounge/Dining Room
- Double Glazed & Gas Central Heating
- TWO Allocated Parking Spaces to Front
- Walking Distance To Whiteley Shops
- Pleasant South Westerley Rear Garden
- Quiet Location
- Long Term Rental



43 Lovage Road, Whiteley, Fareham, Hampshire, PO15 7NE. £1,295 PCM



Approx. Gross Internal Floor Area 573 SQ FT 53 SQ Metres

Whilst every attempt has been made to ensure the accuracy of the floor plans, measurements of doors, windows and rooms are approximate and no responsibility is taken for any error, omission or mis-statement. These plans are for representation purposes only and should be used as such. The services, systems and appliances listed in this specification have not been tested by SBK Property Consultants and no guarantee as to their operating efficiency can be given.



ADDITIONAL INFORMATION

Council Tax Band
Band B which is payable to Winchester City Council. The charge for this is £1,739.11.

Availability Date
The property is available from The beginning/middle of February.

Length of Let
Initially offered on either a six or twelve month tenancy but the landlords intentions are for the property to be let on a long term basis.

Pets
The landlord for this property has specified that pets are not permitted.

Energy Performance Certificate
The rating for the property is C. To obtain a full report of the EPC please contact SBK.

Parking
The property has parking for two cars to the front.



For more information

01489 570019
www.sbk4homes.com