

**OVER 60?**

Secure this property  
for up to **59% less!**



**Guide Price**

**£525,000**

**Freehold**

5x  2x  1x 

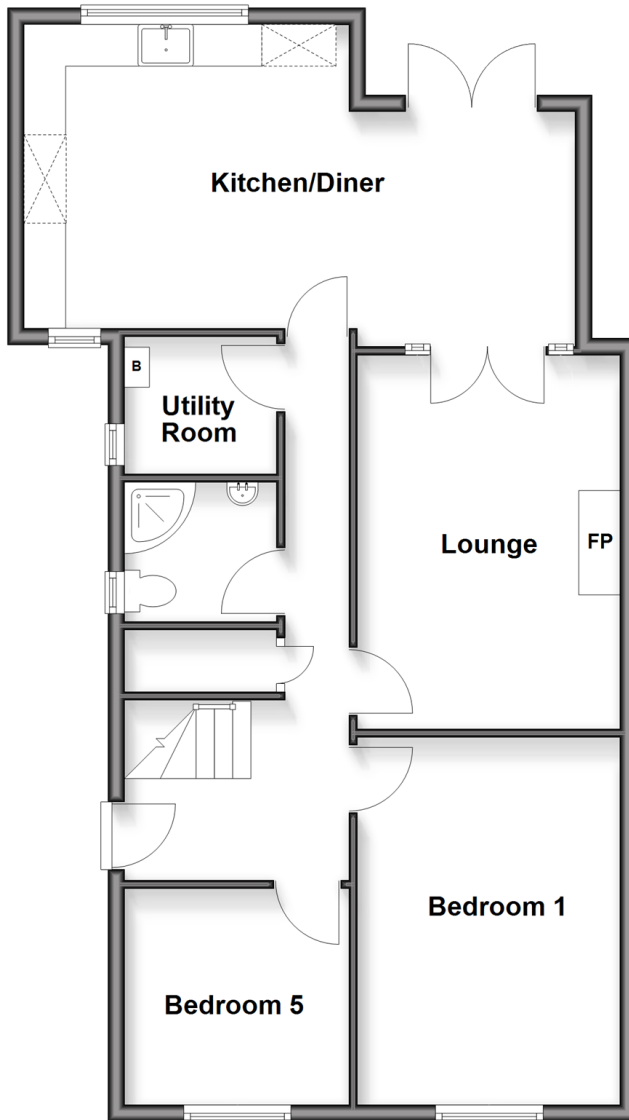
St. Margaret's Drive, Wigmore, Gillingham,  
Kent, ME8

*Wards*

Helping you move forwards

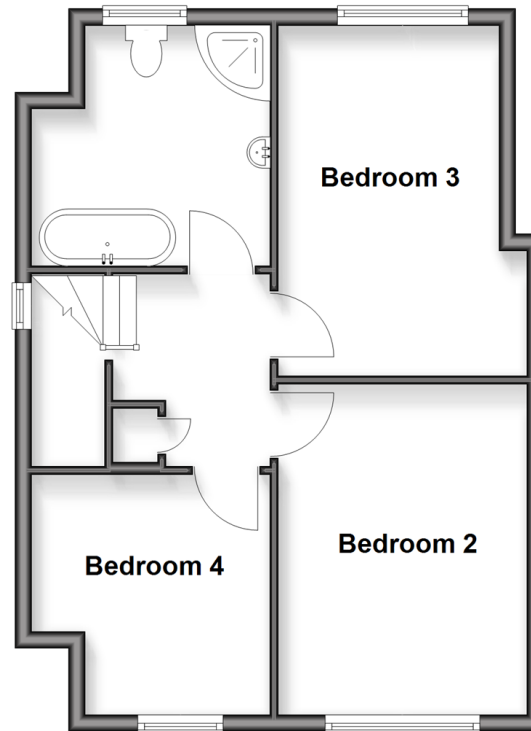
## Ground Floor

Approx. 76.6 sq. metres (824.3 sq. feet)



## First Floor

Approx. 47.0 sq. metres (506.2 sq. feet)



## Accommodation

### GROUND FLOOR

Entrance Hall

Lounge : 15'9 x 10'2 (4.80m x 3.10m)

Kitchen/Diner : 21'6 x 12'1 (6.56m x 3.69m)

Utility Room : 5'7 x 5'4 (1.70m x 1.63m)

Shower Room

Bedroom 1 : 14'8 x 10'3 (4.47m x 3.13m)

Bedroom 5: 9'1 x 8'9 (2.77m x 2.67m)

### FIRST FLOOR

Landing

Bedroom 2: 13'9 x 9'9 (4.19m x 2.97m)

Bedroom 3 : 13'0 x 9'9 (3.97m x 2.97m)

Bedroom 4: 10'3 x 8'8 (3.13m x 2.64m)

Family Bathroom : 9'4 x 8'8 (2.85m x 2.64m)

### OUTSIDE

Rear Garden

Driveway



## Main features

- A deceptively spacious and versatile property that offers excellent value for money
- Stunning 21ft open plan kitchen/diner
- Lounge with feature wood burner
- Useful utility room and shower room
- Generous and private rear garden
- Highly sought after Wigmore location
- Ample parking for numerous vehicles



### Nearest Schools

Primary Schools: Fairview Community Primary, Park Wood Junior School, St Margaret's CofE Voluntary Controlled Junior School  
Secondary Schools: Rainham School for Girls, The Howard School, Leigh Academy Rainham



### Transport Information

Train Stations: Rainham 1.5 miles, Gillingham 3.0 miles, Newington 3.4 miles



### Address

St. Margaret's Drive, Wigmore, Gillingham, Kent, ME8



### Directions

For directions to this property please contact us.



*Wards*  
Helping you move forwards

Call Rainham Branch 01634 373531 ■ [wardsofkent.co.uk](http://wardsofkent.co.uk)



- Legal advice should be taken to verify fixtures/fittings, planning, alterations and/or lease details
- Appliances & services are untested, dimensions are approximate and floor plans are not to scale
- Through a Homewise Home For Life Plan people aged 60+ can secure this property for up to 50% less, by purchasing a Lifetime Lease.

EPC RATING

CURRENT: C(73) POTENTIAL: B(83)

11339136/20251125/DW/DW