



Windsock Close

London, SE16

£2,000 per month
(£461.54 per week)

NO SHARERS!!! A charming 2 bedroom apartment on the first floor of this modern purpose built block situated close to the local amenities and transport links of Surrey Quays and Canada Water as well as being very close to Greenland Dock. EPC rating C



Windsock Close

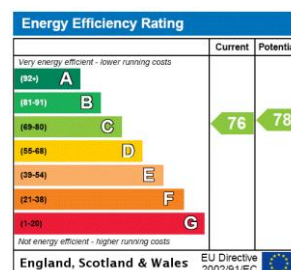
London, SE16

- Beautiful Apartment
- Dock & River Views
- Two Bedrooms
- Excellent access to Canary Wharf
- Furnished
- NO SHARERES

A charming 2 bedroom apartment on the 1st floor of this modern purpose built block situated close to the local amenities and transport links of Surrey Quays and Canada Water as well as being very close to Greenland Dock where you can catch the Thames Clipper to the City and Canary Wharf. The apartment is lovingly furnished and benefits from views over looking the River Thames and is available on a furnished basis.

Canada Water & Rotherhithe are charming areas situated south of the river Thames. The area is well connected via Canada Water, Surrey Quays and Rotherhithe stations as-well as the river taxi making The City and Canary Wharf easily accessible. Although residents can enjoy walks along the banks of the river to Shad Thames which is home to array of bars and restaurants, the area also boasts many of its own amenities including Surrey Quays shopping centre and cinema.

Minimum Term: 12 months
Deposit Required: £2,307.69
Local Authority: Southwark Council
Council Tax Band: D
EPC Rating: B
Furnished



Chestertons Tower Bridge Lettings

220 Tower Bridge Road
 Tower Bridge
 London
 SE1 2UP
 towerbridge@chestertons.co.uk
 02073576911
 chestertons.co.uk

Additional tenant charges apply (fees apply to non-AST tenancies only)
 Tenancy Agreement Fee: £300
 References per Tenant/Guarantor: £60
 Inventory check (approx. £100 – £250 inc. VAT)
chestertons.co.uk/property-to-rent/applicable-fees

Windsock Close, SE16

Approximate gross internal area

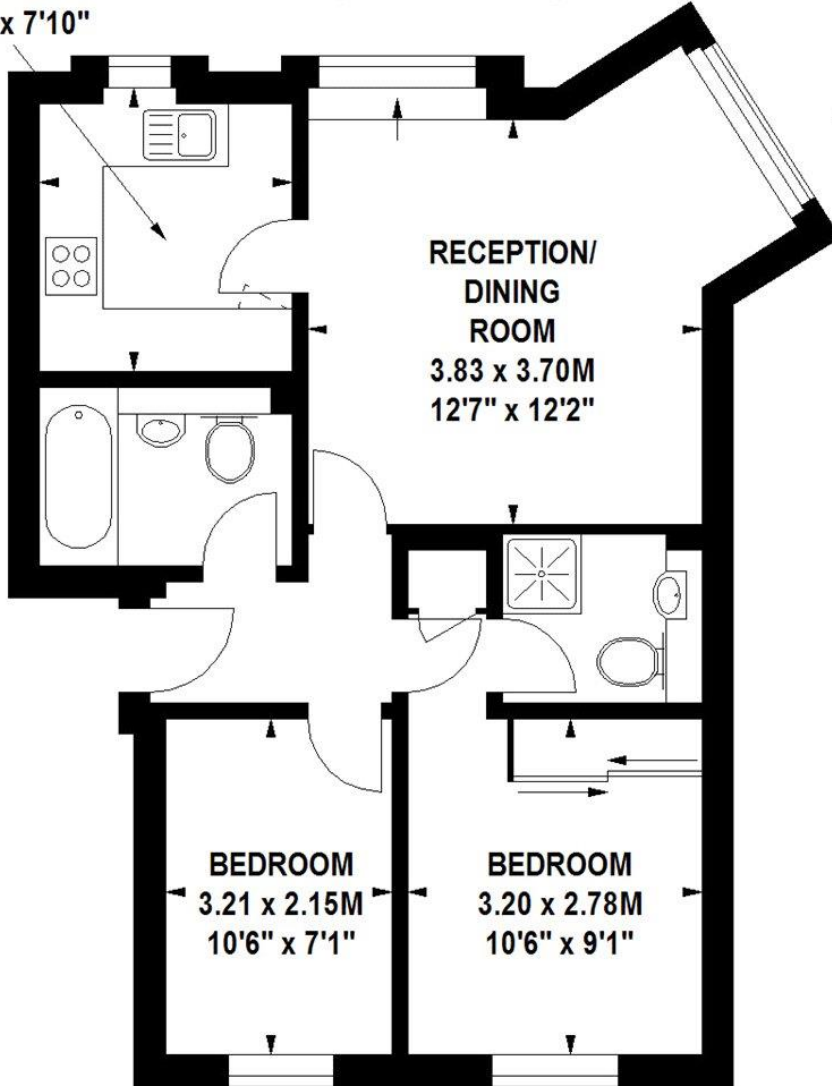
53 sq m / 571 sq ft

KITCHEN
2.71 x 2.38M
8'11" x 7'10"

**RECEPTION/
DINING
ROOM**
3.83 x 3.70M
12'7" x 12'2"

BEDROOM
3.21 x 2.15M
10'6" x 7'1"

BEDROOM
3.20 x 2.78M
10'6" x 9'1"



First Floor

Floor Plan produced for Chestertons by Mays Floorplans © . Tel 020 3397 4594

Illustration for identification purposes only, not to scale

All measurements are maximum, and include wardrobes and window bays where applicable

