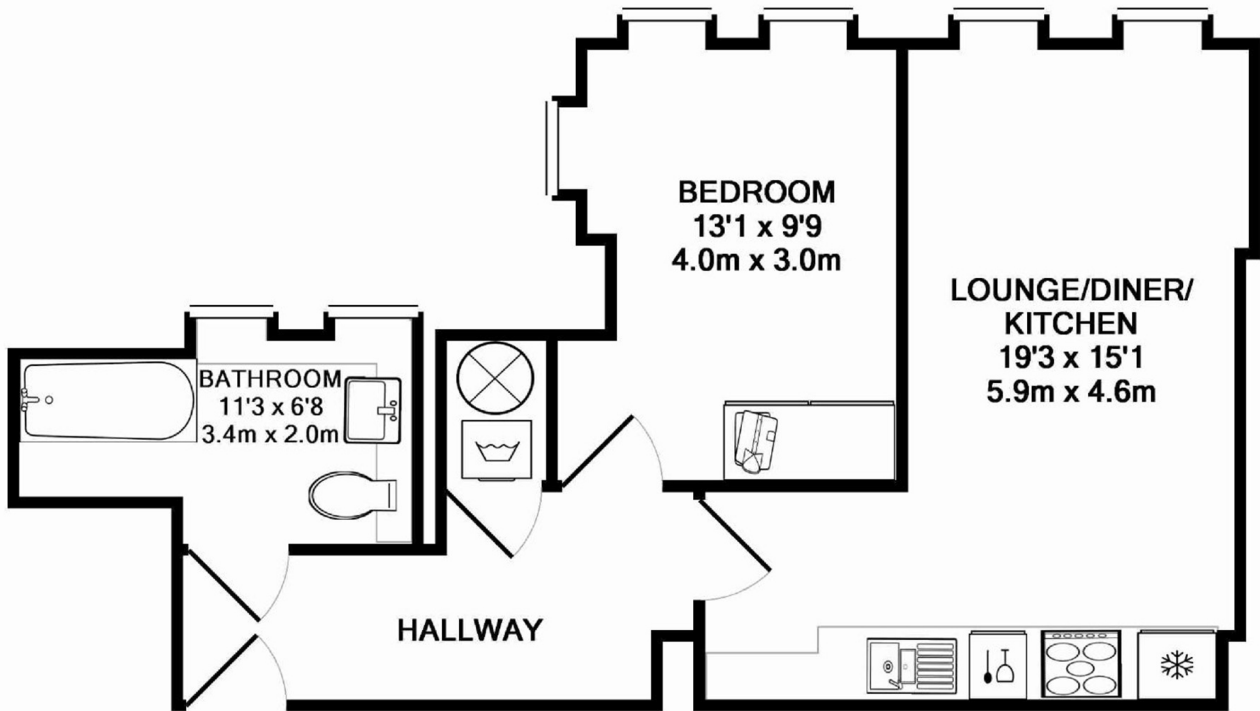




## 4-7 RED LION COURT, EC4A

**£600,000**

Presenting an exquisite 1-bedroom apartment in the prestigious Red Lion Court, EC4A. Located just off Chancery Lane, this property is a testament to modern luxury and convenience. || This apartment boasts high specifications and contemporary design, making it the perfect choice for those seeking a quintessential London residence or a strategic



TOTAL APPROX. FLOOR AREA 478 SQ.FT. (44.5 SQ.M.)

Whilst every attempt has been made to ensure the accuracy of the floor plan contained here, measurements of doors, windows, rooms and any other items are approximate and no responsibility is taken for any error, omission, or mis-statement. This plan is for illustrative purposes only and should be used as such by any prospective purchaser. The services, systems and appliances shown have not been tested and no guarantee as to their operability or efficiency can be given

Made with Metropix ©2013

**LiFE RESIDENTIAL**

252 Westminster Bridge  
Road, London, SE1 7PD  
Sales: 020 7476 0125  
Lettings: 020 7620 1600

Energy Rating: B. We aim to make our particulars both accurate and reliable. However they are not guaranteed; nor do they form part of an offer or contract. If you require clarification on any points then please contact us, especially if you're traveling some distance to view. Please note that appliances and heating systems have not been tested and therefore no warranties can be given as to their good working order.