



69 Grove Road,
Guide Price £325,000 - £350,000

🛏 3 🚿 2 🚗 2

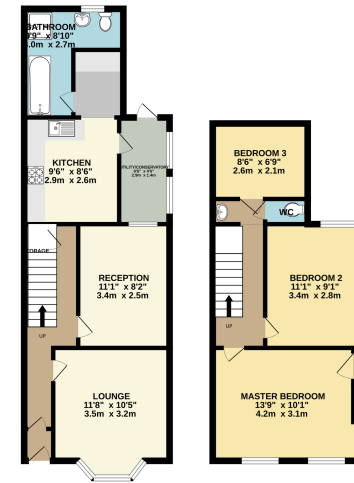


- Good Size Bedrooms
- Close to local high street with all your shopping amenities
- Low Maintenance Rear Garden
- Ideal Location
- Charming Three Bedroom Terraced Victorian Style House
- UPVC Double Glazed Windows throughout
- Walking Distance to Grays C2C train station direct to Fenchurch Street
- Downstairs Family Bathroom and Upstairs W/C
- Two Impressive Size Reception Rooms

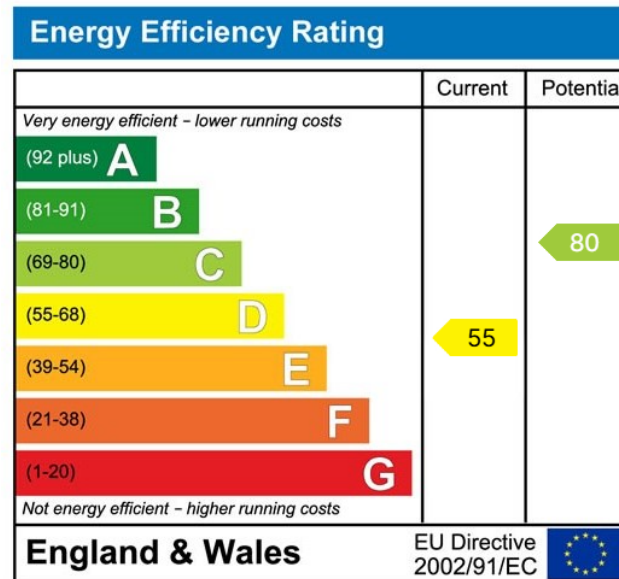




GROUND FLOOR
859 sq.ft. (79.8 sq.m.) approx.



Welcome to Grove Road. A Quaint and Charming Victorian Style Terraced House, with Three Good Sized Bedrooms, Two Reception Rooms, Kitchen with separate conservatory/utility area and in an ideal location for schools, shops and travel links. Guide Price £325,000 - £350,000.



Address: 18 Derwent Parade, South Ockendon, RM15 5EE

Phone: 01708 203 232

Email: zoew@myidealmortgage.co.uk