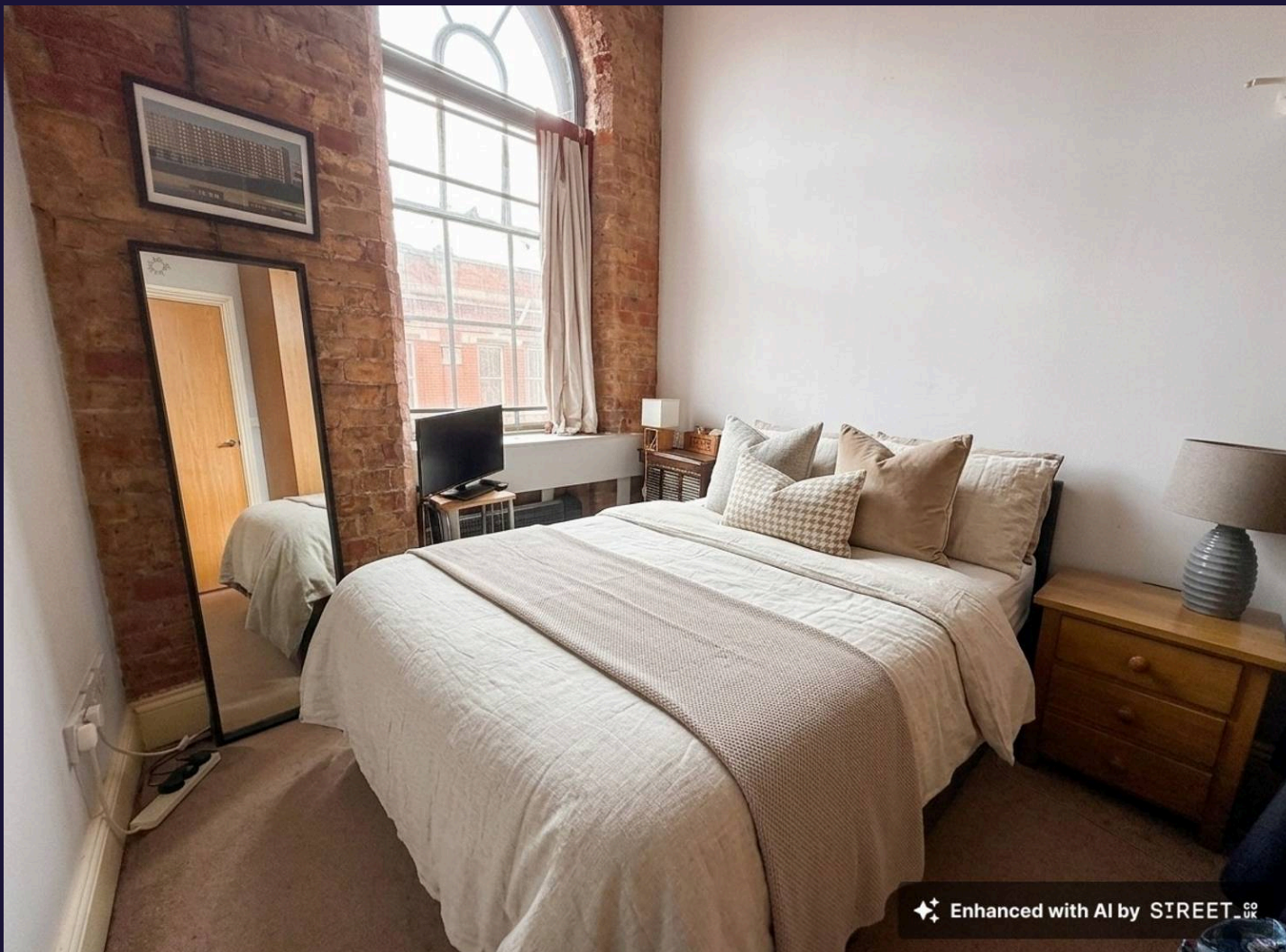




Broadway House, 32 Stoney Street
£950 PA

 **Comfort**
Estates



Broadway House, Nottingham

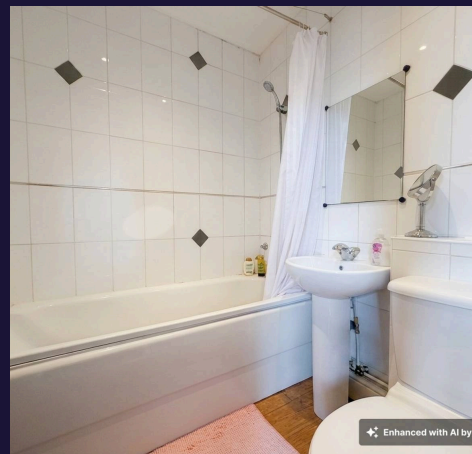
Presenting this one-bedroom apartment located in Nottingham's popular Lace Market area.

The property comprises an entrance hallway with a useful open storage area and shelving, ideal for coats, shoes, and everyday storage. The open-plan living and kitchen area benefits from a large window, allowing plenty of natural light into the space. The kitchen is fitted with a range of units and includes white goods comprising a fridge freezer, washing machine, oven, hob, and extractor fan.

The double bedroom also enjoys a large window, creating a bright and airy feel. The bathroom features a white three-piece suite with a shower over the bath and can be accessed from both the bedroom and living area in a Jack and Jill style layout.

Step outside and you'll find an array of shops, independent cafés, restaurants and bars that Nottingham is renowned for. Nottingham Train Station, the Motorpoint Arena, Broadway Cinema, bus routes in and out of the city, and the historic Nottingham Castle are all within easy walking distance.

Offered furnished and available 5th August 2026.





Lounge / Kitchen

16' 8" x 8' 4" (5.09m x 2.53m)

Open plan kitchen/lounge space. Full of character with original windows to the front aspect, allowing plenty of natural light. The room offers access to the bedroom and jack and jill style bathroom. Items included are sofa and breakfast bar stools.

Kitchen

6' 9" x 9' 4" (2.06m x 2.85m)

Lined with a range of wall and base units with work tops over, fridge, freezer, washing machine, oven, hob and extractor fan. There is also a separate breakfast bar build around one of the pillars.

Bedroom

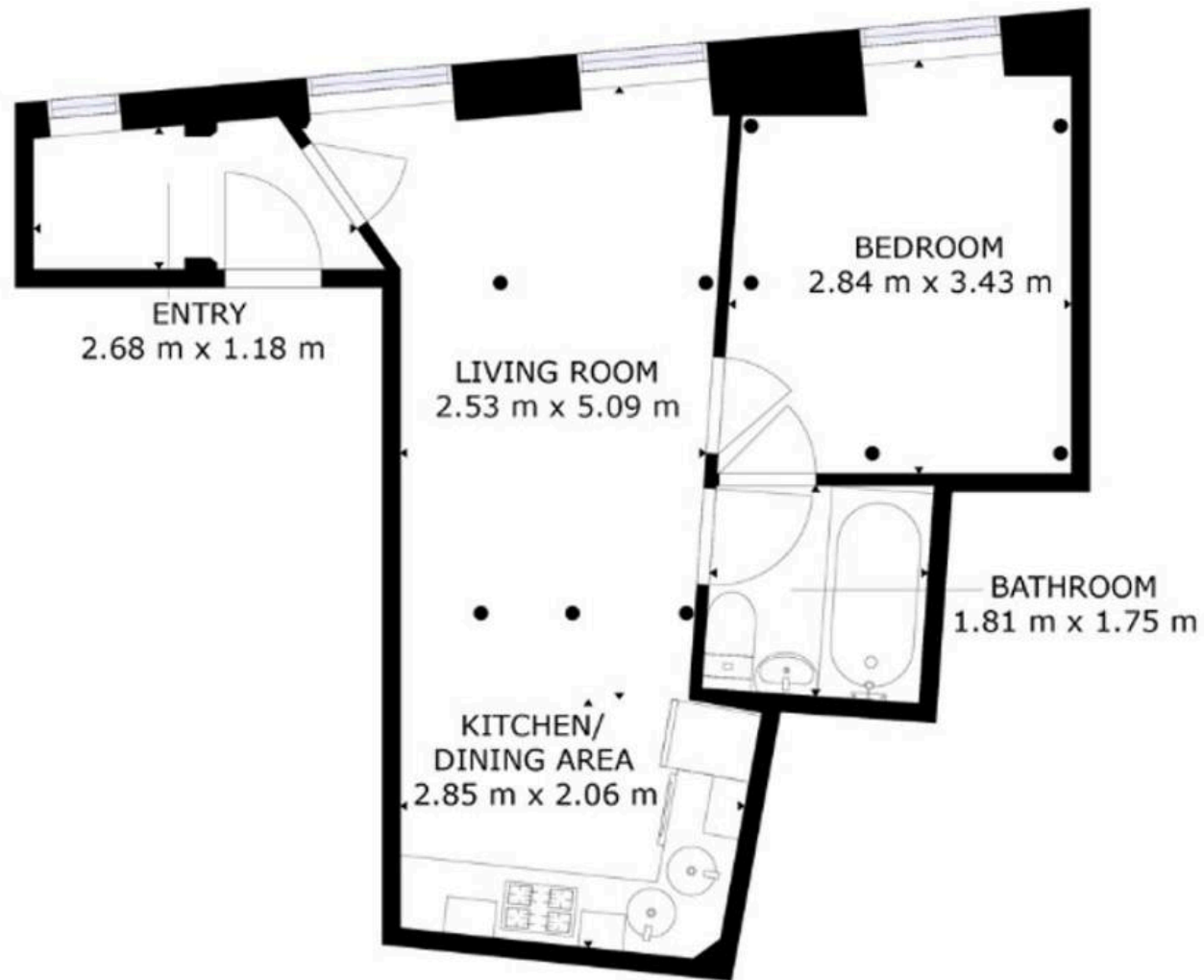
9' 4" x 11' 3" (2.84m x 3.43m)

Double bedroom with large window creating a bright and airy feel. There is access to the jack and jill style bathroom. Neutrally decorated with carpeted flooring. Items included are the double bed, wardrobe and bedside drawers.

Bathroom

5' 11" x 5' 9" (1.81m x 1.75m)

Three-piece suite comprising panel bath with shower over, wash hand basin and a low-level W.C. Finished in white with vinyl flooring.



GROSS INTERNAL AREA
TOTAL: 36 m²

SIZES AND DIMENSIONS ARE APPROXIMATE, ACTUAL MAY VARY



Comfort Estates

Comfort Estates, 47 Derby Road - NG1 5AW

0115 933 8997 • info@comfortestates.co.uk • www.comfortestates.co.uk