



**Guide Price**  
**£550,000**

**Freehold**

2x  2x  2x 

**Goidel Close,**  
**Wallington, Surrey, SM6**

**OVER 60?**

Secure this property  
for up to **59% less!**

**cubitt & west**  
Helping you move forwards



## Main features

- **Stunning semi-detached chalet-style house**
- **Situated in a quiet cul-de-sac**
- **Offering spacious accommodation throughout**
- **Great location for schools and transport links**
- **Main bedroom with en-suite shower room**
- **Beautiful rear garden and driveway**

## Accommodation

### GROUND FLOOR

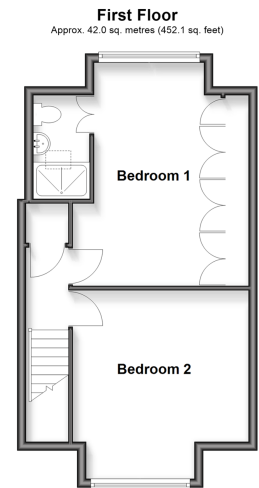
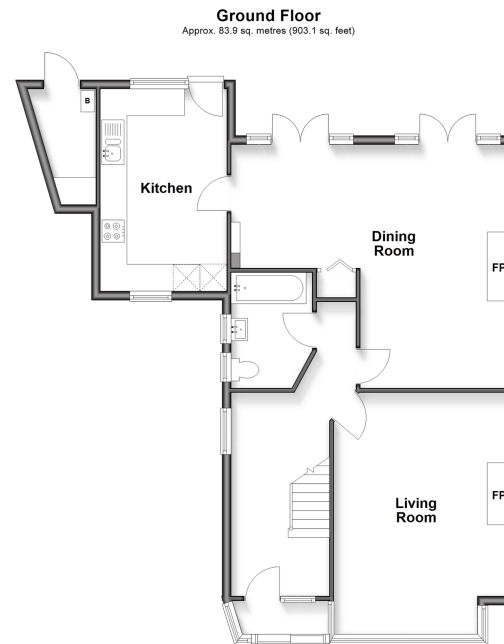
Entrance Porch  
 Entrance Hall  
 Living Room: 18'1 into bay x 13'1 (5.52m x 3.99m)  
 Dining Room: 20'5 maximum x 18'1 maximum (6.23m x 5.52m)  
 Kitchen: 16'5 x 9'4 (5.01m x 2.85m)  
 Bathroom

### FIRST FLOOR

Landing  
 Bedroom 1: 16'0 x 11'7 up to fitted wardrobes (4.88m x 3.53m)  
 En-Suite Shower Room  
 Bedroom 2: 13'6 into bay x 13'0 (4.12m x 3.97m)

### OUTSIDE

Driveway  
 Rear Garden



**Call Wallington - 020 8647 0011 ■ cubittandwest.co.uk**

- If buying to let, the energy rating will need to be improved to at least 'E' rating before you can let the property
- Appliances & services are untested, dimensions are approximate and floor plans are not to scale

- Legal advice should be taken to verify fixtures/fittings, planning, alterations and/or lease details
- Through a Homewise Home For Life Plan people aged 60+ can secure this property for up to 50% less, by purchasing a Lifetime Lease



22117942/20251202/GG/DK