



DRAYTON GARDENS

Chelsea, SW10





TURN KEY HOME PERFECTLY PLACED IN CHELSEA

An immaculate and beautifully renovated four-bedroom family house, complete with air conditioning, double garage and a private patio situated on one of Chelsea's most sought-after residential streets.



Local Authority: Royal Borough of Kensington and Chelsea

Council Tax band: H

Tenure: Freehold

Guide price: £6,250,000

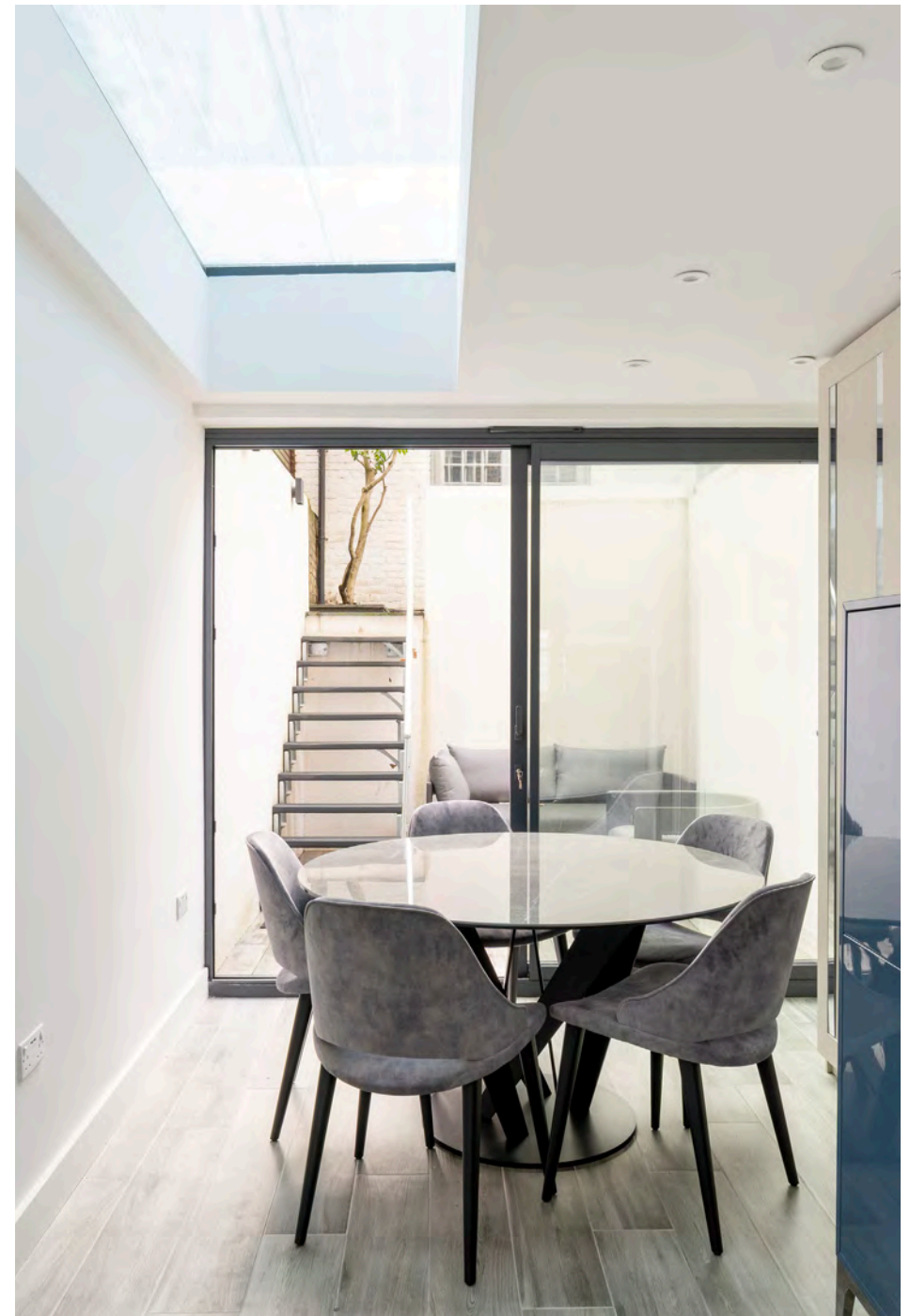
STYLISH HOME IN AN IMPRESSIVE PERIOD BUILDING

This elegant home offers a superb balance of refined entertaining space and versatile family living across over 3,200 sq ft in an impressive period building, delivering the scale, ceiling height and spatial versatility expected of a prime Chelsea home.

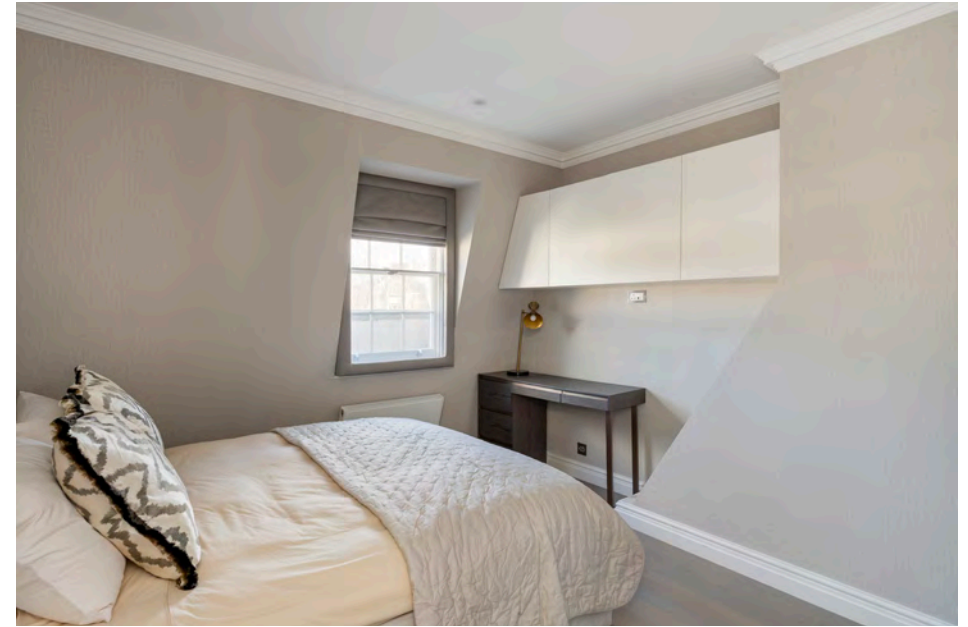
The raised ground floor is anchored by an immaculately presented double reception room with excellent ceiling heights, creating an elegant and uplifting entertaining space with excellent natural light and classical proportions. Access to the west-facing garden is on this level.

The lower ground floor offers further direct access to the private garden through the substantial open-plan kitchen-dining area. A utility room and two external vault rooms complete this floor, providing valuable domestic and long-term storage while keeping the primary floors clear and refined. This level also includes a wine cellar, offering both practicality and charm.

The first floor offers another reception room that continues the sense of volume, offering a second formal or informal living area—ideal for family use or additional entertaining. A spacious double bedroom and a sleek family bathroom are also located







DRAYTON GARDENS SW10

Bedroom accommodation is distributed across the property to offer both privacy and flexibility. The principal bedroom benefits from excellent volume and high ceilings, offering a well-defined suite with built-in wardrobes and en suite bathroom. Additional bedrooms are arranged across the first and third floors, enabling a balanced mix of family rooms, guest accommodation or staff use. The tiered layout ensures a calm transition between public and private spaces, with upper-floor bathrooms and landings arranged to support efficient circulation throughout.

The home also includes a double garage, providing secure parking, which is a significant advantage for central London living. A balcony on an upper floor adds another outdoor element. Additional vaults provide supplementary external storage, rounding out the home's generous ancillary offering.

Please note, CGI images are used for illustrative purposes only.

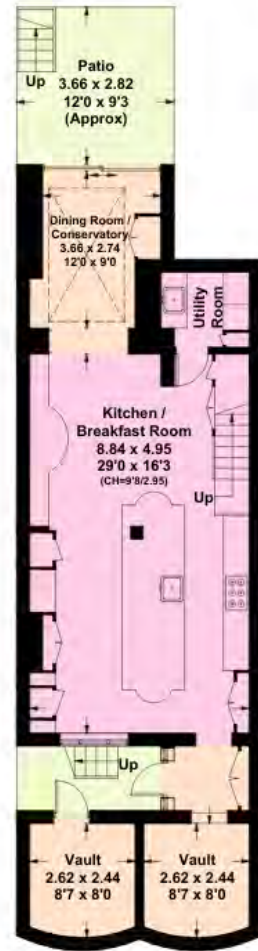




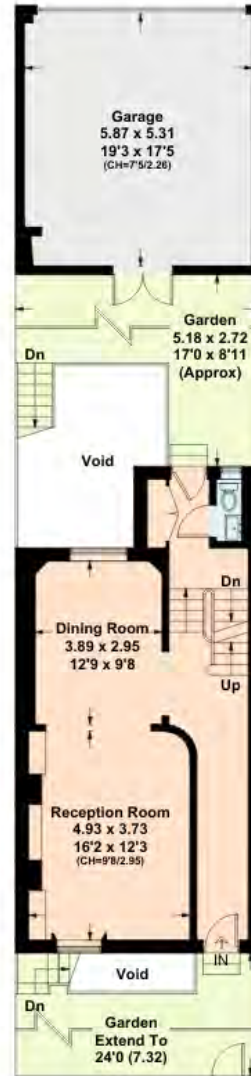




Redwood head height below 1.8m



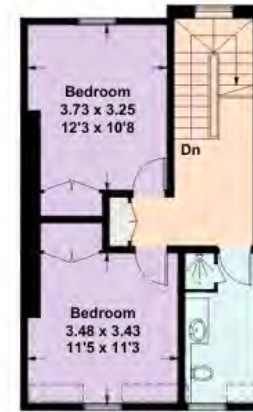
Lower Ground Floor



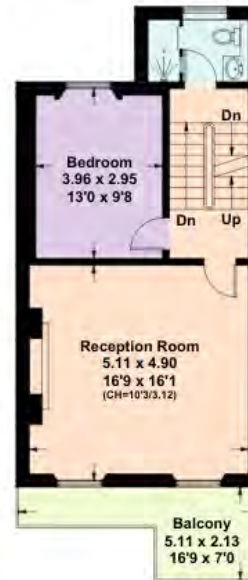
Raised Ground Floor



Second Floor



Third Floor



First Floor



Drayton Gardens, SW10
 Approximate Gross Internal Area = 265.7 sq m / 2,860 sq ft
 Garage & External Vault = 37.4 sq m / 402 sq ft

This plan is for layout guidance only. Not drawn to scale unless stated. Windows and door openings are approximate. Whilst every care is taken in the preparation of this plan, please check all dimensions, shapes and compass bearings before making any decisions reliant upon them. (ID767266)

Rebecca Jane Higgins

020 7871 4115

rebecca.higgins@knightfrank.com

Knight Frank Chelsea and South Kensington

352a Kings Road

SW3 5UU

knightfrank.co.uk

Your partners in property

1. Particulars: These particulars are not an offer or contract, nor part of one. You should not rely on statements given by Knight Frank in the particulars, by word of mouth or in writing ("information") as being factually accurate about the property, its condition or its value. Neither Knight Frank nor any joint agent has any authority to make any representations about the property, and accordingly any information given is entirely without responsibility on the part of Knight Frank. 2. Material Information: Please note that the material information is provided to Knight Frank by third parties and is provided here as a guide only. While Knight Frank has taken steps to verify this information, we advise you to confirm the details of any such material information prior to any offer being submitted. If we are informed of changes to this information by the seller or another third party, we will use reasonable endeavours to update this as soon as practical. 3. Photos, Videos etc: The photographs, property videos and virtual viewings etc. show only certain parts of the property as they appeared at the time they were taken. Areas, measurements and distances given are approximate only. 4. Regulations etc: Any reference to alterations to, or use of, any part of the property does not mean that any necessary planning, building regulations or other consent has been obtained. A buyer must find out by inspection or in other ways that these matters have been properly dealt with and that all information is correct. 5. Fixtures and fittings: A list of the fitted carpets, curtains, light fittings and other items fixed to the property which are included in the sale (or may be available by separate negotiation) will be provided by the Seller's Solicitors. 6. VAT: The VAT position relating to the property may change without notice. 7. To find out how we process Personal Data, please refer to our Group Privacy Statement and other notices at <https://www.knightfrank.com/legals/privacy-statement>.

Particulars dated <Particularsdate>. Photographs and videos dated <Photodate>. All information is correct at the time of going to print. Knight Frank is the trading name of Knight Frank LLP. Knight Frank LLP is a limited liability partnership registered in England and Wales with registered number OC305934. Our registered office is at 55 Baker Street, London W1U 8AN. We use the term 'partner' to refer to a member of Knight Frank LLP, or an employee or consultant. A list of members names of Knight Frank LLP may be inspected at our registered office. If you do not want us to contact you further about our services then please contact us by either calling 020 3544 0692, email to marketing.help@knightfrank.com or post to our UK Residential Marketing Manager at our registered office (above) providing your name and address.

 Knight
Frank

