



High Street, £170,000

- No Ongoing Chain
- Three Bedrooms
- Semi Detached
- Front And Rear Gardens
- Close To Amenities
- EPC Rating: Awaited



 3
  1
  1



About the property

Offered for sale with no ongoing chain is a three bedroom semi detached house. Located in Tonyrefail, the property is situated within close proximity to local shops and public transport links. The accommodation briefly comprises; entrance porch, entrance hall, lounge/ diner and kitchen to the ground floor. To the first floor there are three bedrooms and a family bathroom. To the outside there is a front and rear garden.

This would make an ideal family home or investment opportunity further offering; gas central heating, potential to modernise and the option to create off road parking to the rear with an outbuilding.

Please call Peter Alan Talbot Green to arrange a viewing or request a viewing 24/7 on our website.

Accommodation

Ground Floor

Entrance Porch

Entrance Hall

Lounge/ Diner

22' 7" max x 10' 9" max (6.88m max x 3.28m max)

Kitchen

8' 3" x 8' 2" (2.51m x 2.49m)



First Floor

Landing

Loft access and airing cupboard where boiler is housed.

Bedroom One

12' 4" max x 9' 3" max (3.76m max x 2.82m max)

Bedroom Two

10' 1" x 9' 9" (3.07m x 2.97m)

Bedroom Three

8' 6" max x 7' 2" max (2.59m max x 2.18m max)

Bathroom

Bath tub, wash hand basin and w.c.

Outside

Front

Enclosed with steps down to the front.

Rear

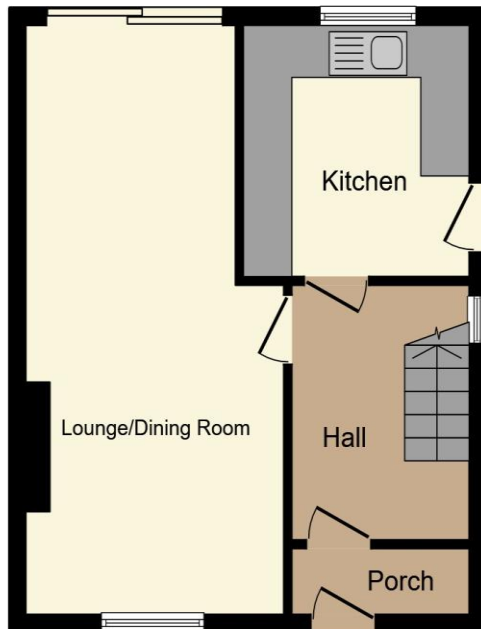
Fully enclosed, side access to front via gate, shed for storage with electricity supply and the possibility to create off road parking.

01443 222851

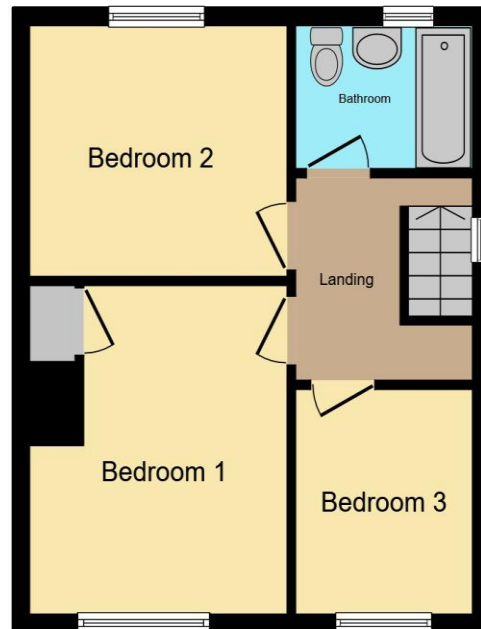
talbotgreen@peteralan.co.uk



Floorplan



Ground Floor



First Floor

Total floor area 74.8 m² (805 sq.ft.) approx

This floor plan is for illustrative purposes only. It is not drawn to scale. Any measurements, floor areas (including any total floor area), openings and orientation are approximate. No details are guaranteed, they cannot be relied upon for any purpose and they do not form part of any agreement. No liability is taken for any error, omission or misstatement. A party must rely upon its own inspection(s). Powered by www.propertybox.io



Important Information

Note while we endeavour to make our sales details accurate and reliable, if there is any point which is of particular interest to you, please contact the office and we will be pleased to confirm the position for you. We have not personally tested any apparatus, equipment, fixtures, fittings or services and cannot verify they are in working order or fit for their purposes. Nothing in these particulars is intended to indicate that carpets or curtains, furnishings or fittings, electrical goods (whether wired or not). Gas fires or light fittings or any other fixtures not expressly included form part of the property offered for sale. This computer generated Floorplan, if applicable, is intended as a general guide to the layout and design of the property. It is not to scale and should not be relied upon for dimensions. Tenure: We cannot confirm the tenure of the property as we have not had access to the legal documents. The buyer is advised to obtain verification from their solicitor or surveyor.

Peter Alan Limited is registered in England and Wales under company number 2073153, Registered Office is Cumbria House, 16-20 Hockliffe Street, Leighton Buzzard, Bedfordshire, LU7 1GN. VAT Registration Number is 500 2481 05. For activities relating to regulated mortgages and non-investment insurance contracts, Peter Alan Limited is an appointed representative of Connells Limited which is authorised and regulated by the Financial Conduct Authority. Connells Limited's Financial Services Register number is 302221. Most buy-to-let

