





Landseer Road, EN1

*****NEW BOILER INSTALLED JUNE 2025***** Addison Townsend are delighted to offer this lovely Victorian terraced house for sale situated in a quiet residential turning in Bush Hill Park. The property is located within 0.2 miles of Bush Hill Park Overground Station, close proximity to Bush Hill Park Primary School, 0.8m of Raglan Primary School, local bus routes and is within easy reach of Enfield Town Shopping Centre. The accommodation offers a welcoming entrance, two reception rooms, kitchen with new washing machine recently installed, two bedrooms, bathroom on the first floor and beautiful rear garden. Further benefits include ample storage, double glazed windows throughout and gas central heating.

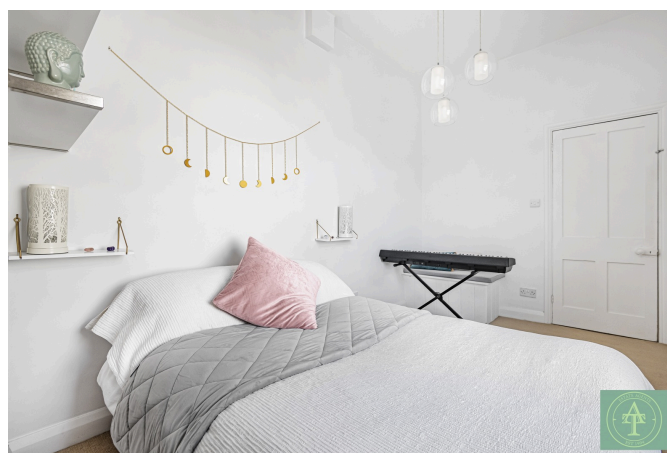


2 2 1

Tenure : Freehold

EPC D

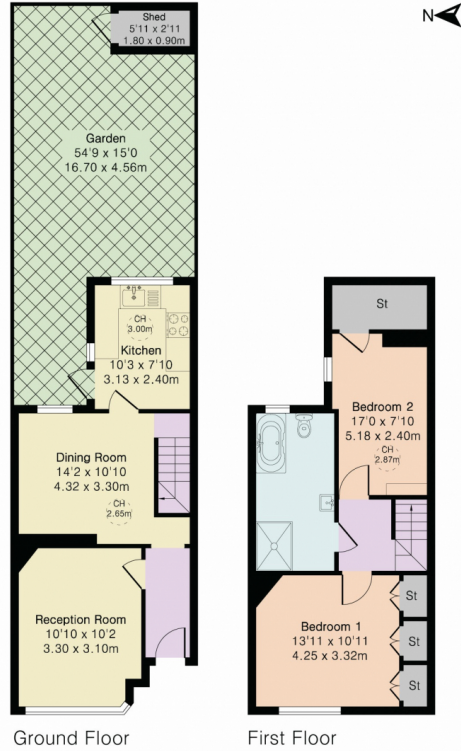
Sq.Ft : 854



Approximate Gross Internal Area 854 sq ft - 80 sq m

Ground Floor Area 426 sq ft - 40 sq m

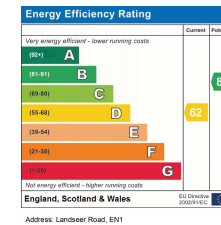
First Floor Area 428 sq ft - 40 sq m



Although Pink Plan Ltd ensures the highest level of accuracy, measurements of doors, windows and rooms are approximate and no responsibility is taken for error, omission or misstatement. These plans are for representation purposes only as defined by RICS code of measuring practise. No guarantee is given on total square footage of the property within this plan. The figure icon is for initial guidance only and should not be relied on as a basis of valuation.



Whilst every care has been taken to prepare these particulars, they are for guidance purposes only. All measurements are approximate and for general guidance purposes only. Whilst every care has been taken to ensure their accuracy, they should not be relied upon and potential buyers/ternants are advised to recheck the measurements



02083608111

www.addisontownsend.co.uk

info@addisontownsend.co.uk



ADDISON TOWNSEND
PROPERTY PROFESSIONALS

