



## Ty Pwdr Farm, Cwmtillery

£300,000 Freehold

Detached Stone House • Three Bedrooms Plus Loft Room • Two Reception Rooms • Kitchen/Diner • Conservatory • First Floor Bathroom • En-Suite Bathroom to Loft Room • Surrounding Grounds and Stable • Garage and Driveway with Electric Car Charging Point • EPC - TBC

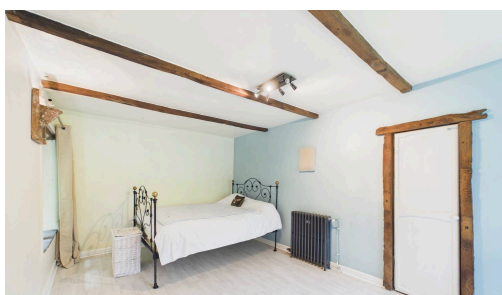


1 Bethcar Street, Ebbw Vale, Gwent, NP23 6HH  
Tel: 01495 302301 Email: [ebbwvale@bidmeadcook.co.uk](mailto:ebbwvale@bidmeadcook.co.uk)  
[www.bidmeadcook.co.uk](http://www.bidmeadcook.co.uk)

An opportunity to acquire this charming detached stone farm house that dates back to 1739 with surrounding gardens and panoramic mountain views located within the village of Cwmtillery on the outskirts of Abertillery. Conveniently located for access to the A467 that leads to Junction 28 of the M4, local amenities, and train station. The accommodation comprises entrance hallway, living room with inglenook fireplace housing a multi-fuel burner stove, dining room/office, Kitchen/Diner, conservatory, three bedrooms and first floor bathroom. There is a loft room with an en-suite bathroom to the second floor. Benefits include double glazing, gas central heating system, solar panels, surrounding grounds, garage and driveway for several vehicles plus an electric car charging point. Early enquiries recommended. ***NB: The property benefits from a right of way to access the front and side of the property.***



Abertillery town centre has a selection of shops and leisure facilities. The passenger rail stations are in Ebbw Vale and Llanhilleth with direct services to Cardiff. There is a leisure centre and primary schools as well as a modern comprehensive school. Cwmtillery lakes, a popular recreation area, is approximately less than 1 mile away with its walks and picnic area. Council Tax band: D  
Tenure: Freehold





You can include any text here. The text can be modified upon generating your brochure.

You can include any text here. The text can be modified upon generating your brochure.

