



Guide Price
£250,000

Leasehold

2x  1x  1x 

**Heathfield Park Drive,
Chadwell Heath, Essex,
RM6**

OVER 60?

Secure this property
for up to **59% less!**

 **DOUGLAS
ALLEN**
Helping you move forwards



Main features

- Ground floor maisonette
- Allocated parking space
- Large communal garden
- Modern fitted kitchen
- Bus links to Goodmayes station
- Ideal for first time buyers or buy-to-let investors

Accommodation

GROUND FLOOR

Entrance Hall

Living Room: 13'7 x 11'2 (4.14m x 3.41m)

Kitchen: 11'6 x 5'9 (3.51m x 1.75m)

Bedroom 1: 14'8 x 9'5 (4.47m x 2.87m)

Bedroom 2: 10'9 x 8'9 (3.28m x 2.67m)

Bathroom

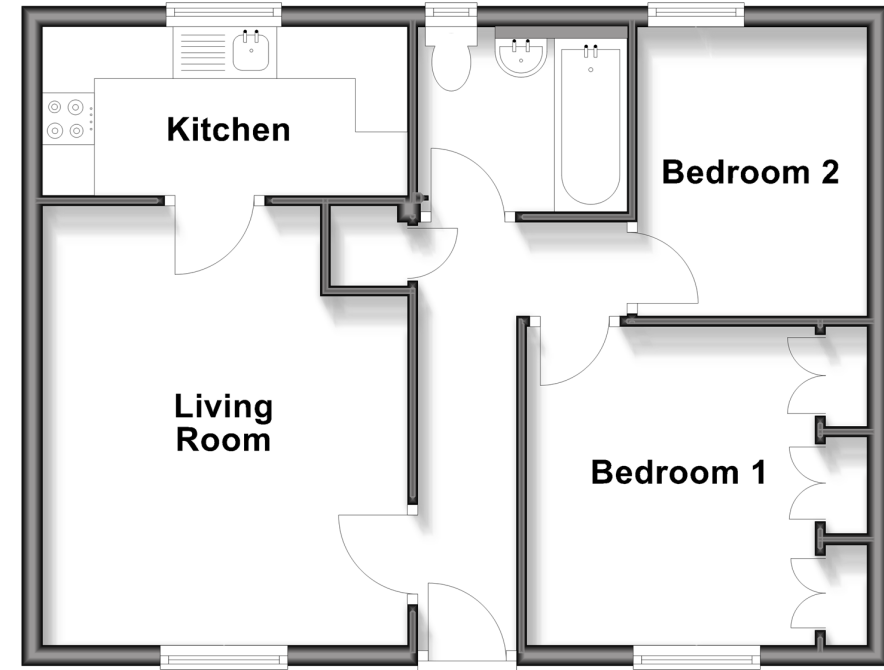
OUTSIDE

Allocated Parking

Communal Garden

Ground Floor

Approx. 47.4 sq. metres (510.4 sq. feet)



Call Chadwell Heath - 020 8597 0043 ■ douglasallen.co.uk

- A private rental licensing scheme applies to some properties in this area, please check with the Local Authority before proceeding
- Legal advice should be taken to verify fixtures/fittings, planning, alterations and/or lease details
- Appliances & services are untested, dimensions are approximate and floor plans are not to scale
- Through a Homewise Home For Life Plan people aged 60+ can secure this property for up to 59% less, by purchasing a Lifetime Lease



50714378/20260203/NK/NK