



MILE



MILE



MILE



MILE



MILE

## Henderson Drive, London NW8

£650,000 Leasehold

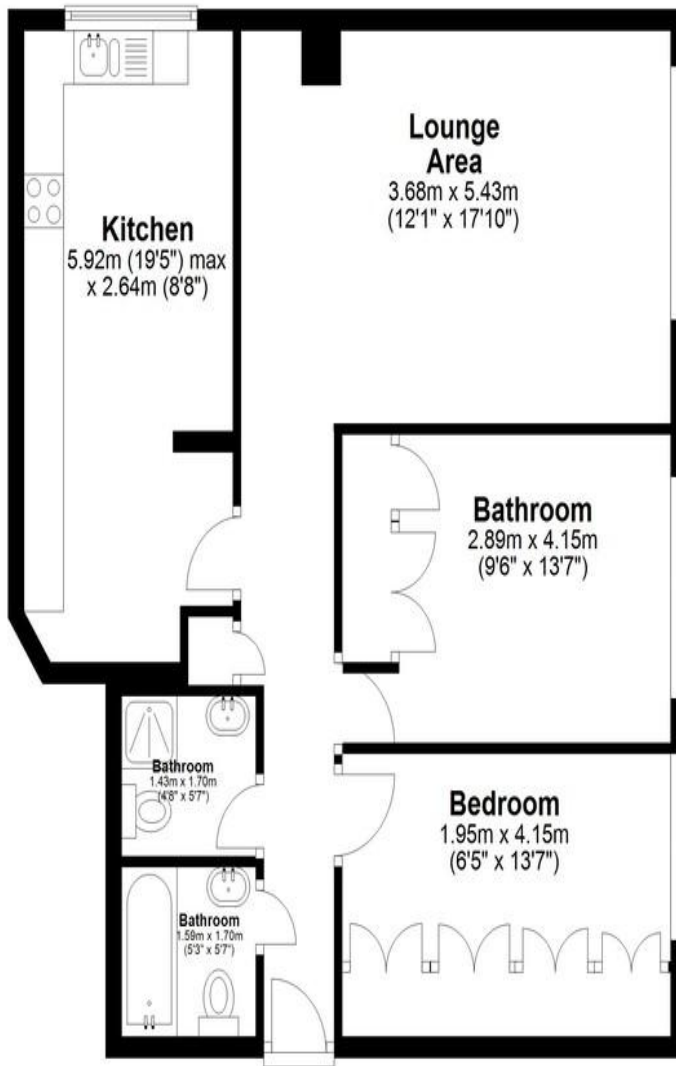
Set within a quiet residential development in an excellent location, this well-presented two-bedroom, two-bathroom apartment offers bright, spacious living ideal for modern lifestyles.

Presented in good condition throughout, the property features well-proportioned interiors filled with great natural light, creating a warm and airy atmosphere. The thoughtful layout provides comfortable living and entertaining space, while the two bathrooms add practicality and convenience.

- Spacious
- Well Presented
- Two bedrooms
- Two bathrooms
- Quiet residential development
- Excellent location
- Good condition
- Great natural light
- Leasehold
- Good transport links

# First Floor

Approx. 71.8 sq. metres (772.9 sq. feet)



Total area: approx. 71.8 sq. metres (772.9 sq. feet)

This floor plan has been created by a third party and should be used as a general outline for guidance only. Any areas, measurements or distances quoted are approximate and any intending purchaser or lessee should satisfy themselves by inspection, searches, enquiries and/or full survey as to the correctness of each statement. We accept no responsibility or liability for any loss whatsoever that may arise as a result of this plan and the information contained within.

© @modephotouk | www.modephoto.co.uk  
Plan produced using PlanUp.

## Henderson Drive

**MONEY LAUNDERING REGULATIONS 2003:** Intending purchasers will be asked to produce identification documentation at a later stage and we would ask for your co-operation in order that there will be no delay in agreeing the sale.

**General:** While we endeavour to make our sales particulars fair, accurate and reliable, they are only a general guide to the property and, accordingly, if there is any point which is of particular importance to you, please contact the office and we will be pleased to check the position for you, especially if you are contemplating travelling some distance to view the property.

**Measurements:** These approximate room sizes are only intended as general guidance. You must verify the dimensions carefully before ordering carpets or any built-in furniture.

**Services:** Please note we have not tested the services or any of the equipment or appliances in this property, accordingly we strongly advise prospective buyers to commission their own survey or service reports before finalising their offer to purchase.