



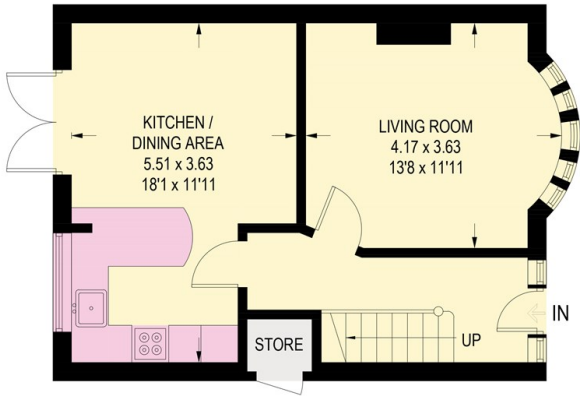
24 Lydgate Hall Crescent, Crosspool, Sheffield, S10 5NE

£1,300 PCM

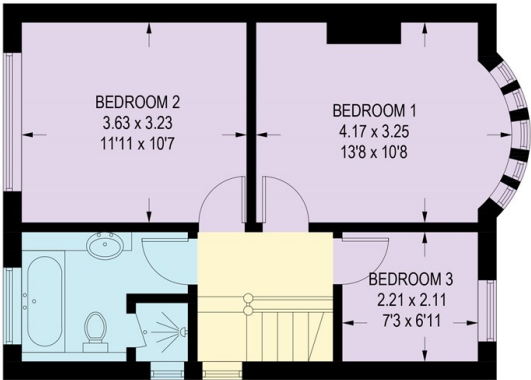
- Three bedroom semi-detached house
- Contemporary bathroom with separate shower and bath
- Available immediately
- Finished internally to a stunning standard
- Two double bedrooms and one single bedroom
- Council tax band C
- Modern dining kitchen
- South facing rear garden

LYDGATE HALL CRESCENT

APPROXIMATE GROSS INTERNAL AREA = 82.4 SQ M / 887 SQ FT
(EXCLUDING STORE)

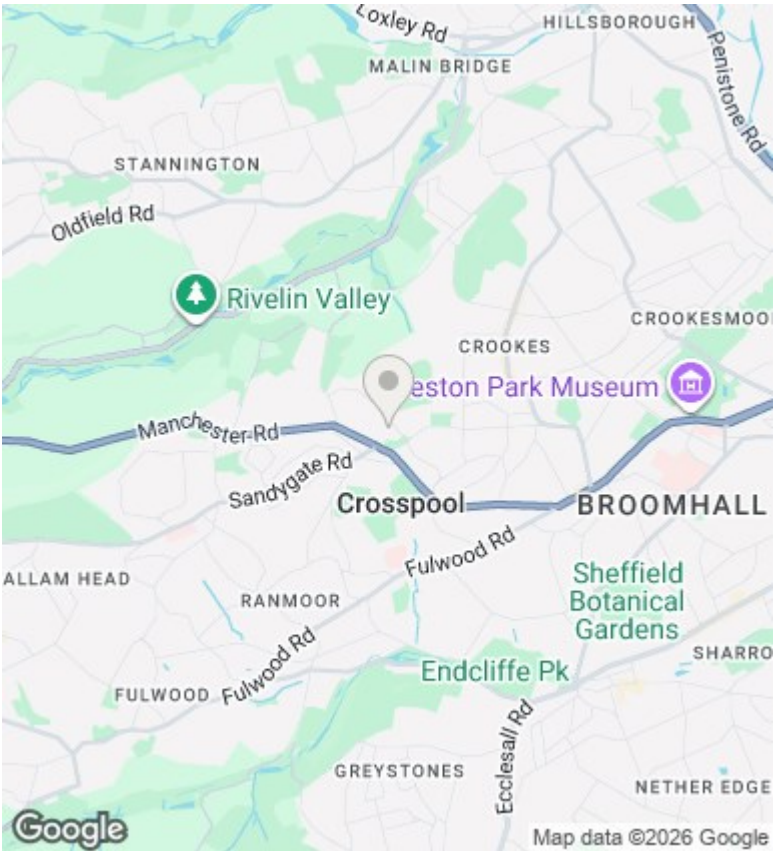


GROUND FLOOR (EXCLUDING STORE)
40.8 SQ M / 439 SQ FT



FIRST FLOOR
41.6 SQ M / 448 SQ FT

Illustration for identification purposes only, measurements are approximate, not to scale.



Directions

Viewings

Viewings by arrangement only. Call 01142 687777 to make an appointment.

Council Tax Band

B

EPC Rating:

C

Energy Efficiency Rating		
	Current	Potential
Very energy efficient - lower running costs		
(92-plus) A		
(81-91) B		84
(69-80) C	71	
(55-68) D		
(39-54) E		
(21-38) F		
(1-20) G		
Not energy efficient - higher running costs		
England & Wales		EU Directive 2002/91/EC