



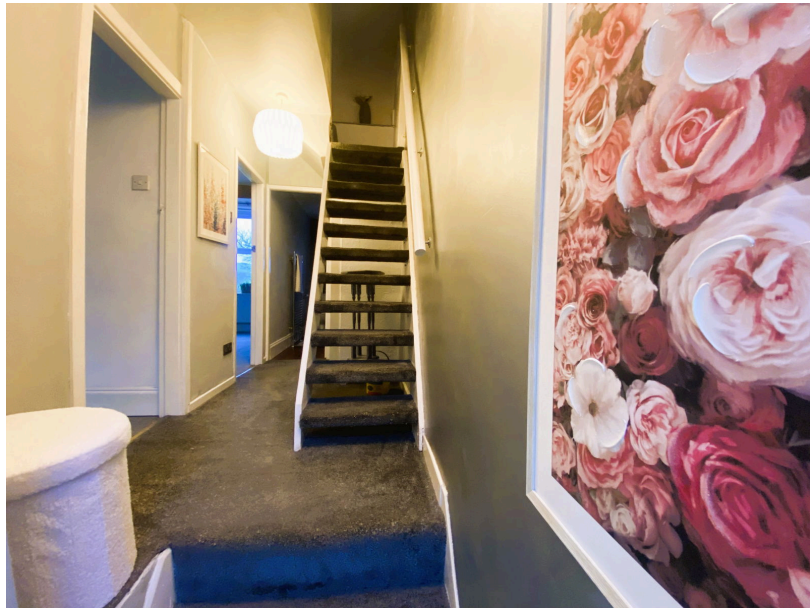
110 Stoneswood Road, Delph OL3 5DZ

£230,000

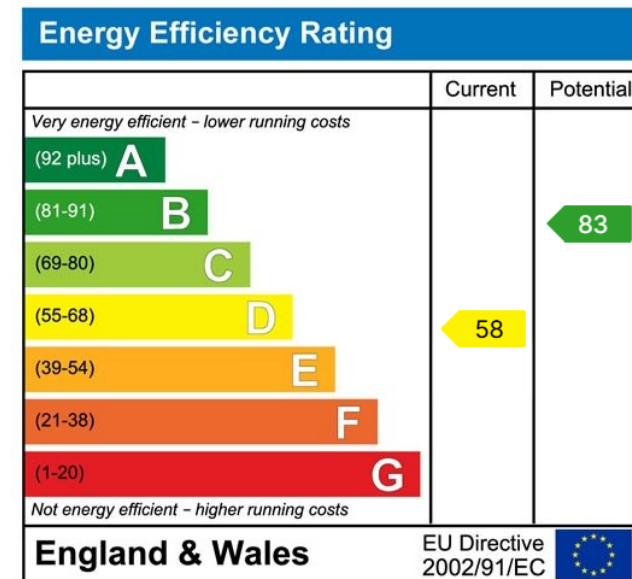
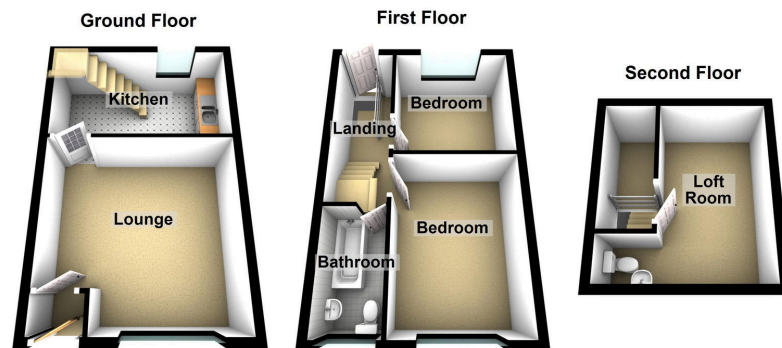
🛏 2 🚿 1 🛋 1



- Traditional Cottage
- Useful Loft Room
- Village Location
- EPC - D
- Two Bedrooms
- Spectacular Open Views
- Ideal First Home



Set over three floors with two double bedrooms and an additional loft room this stone property is packed with character features and has superb panoramic views. Situated within walking distance from Delph village and its amenities, plus Delph Primary School the property would be ideally suited to both first time buyers and young families alike. Internally the living space comprises entrance vestibule, lounge and dining kitchen whilst to the first floor there are two bedrooms and a family bathroom. From the first floor landing you have access to the loft room which is currently used as an additional bedroom. Externally to the front there is a patio area looking out over amazing open views and to the rear an enclosed garden.



Chadderton Office

509 Middleton Road,
Chadderton, Oldham,
OL9 9SH

chadderton@kirkham-property.co.uk
t: 0161 626 5688