







10 Racker Way

Sheffield • South Yorkshire • S6 5FB

Guide Price £230,000 - £240,000

Tucked away at the end of a quiet cul-de-sac, this elevated two-bedroom detached bungalow enjoys a private leafy setting just a stone's throw from Rivelin Valley, with attractive views across the valley and a generous terraced rear garden backing onto woodland. Offered to the market with no onward chain. Steps rise to the side entrance, leading into a welcoming hallway. The bay-fronted living room is presented in neutral décor with modern grey carpeting and flows through to a versatile second reception room, ideal as a dining room or additional living space, both benefitting from the surrounding leafy outlook. The fitted kitchen features contrasting worktops, space and plumbing for a range of appliances, and opens through to a superb light and airy garden room enjoying views over the rear garden. An inner hallway then leads to a contemporary three-piece bathroom, fitted with a vanity hand wash basin, shower over the bath, and stylish tiling. There are two double bedrooms, both finished with crisp white décor and modern grey carpets, with the spacious rear-facing bedroom overlooking the garden. There is also access to a useful loft space complete with integral ladders and lighting. Externally, the property benefits from a low-maintenance garden to the front, along with generous under-house storage. To the rear is a generous terraced garden arranged over three levels, designed for low maintenance and offering a fantastic blank canvas for further landscaping. Features include rockery areas, a garden shed, and a peaceful backdrop onto adjoining woodland. Situated on Racker Way in the sought-after S6 area of Sheffield, just off Rivelin Valley Road, the property enjoys a convenient location with excellent transport links, easy access to local amenities and tram stops, and straightforward routes into the city centre. The area is ideal for a range of buyers, including first-time buyers, professionals, and families looking to enjoy the nearby green spaces and well-connected setting.





- Elevated Detached Bungalow
- Tucked Away at the End of a Quiet Cul-De-Sac
- Views Over Rivelin Valley
- 2 Double Bedrooms
- Open Plan Living / Dining
- Light & Airy Conservatory
- Recently Refurbished
- Low Maintenance Terraced Garden
- Tenure TBC
- Council Tax Band C, EPC Rating E



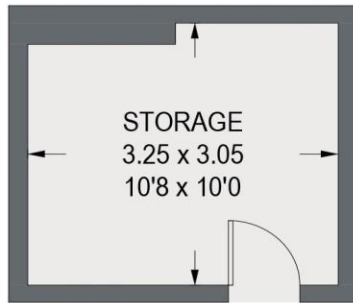


10 RACKER WAY

APPROXIMATE GROSS INTERNAL AREA = 81.1 SQ M / 872 SQ FT

STORAGE = 9.9 SQ M / 107 SQ FT

TOTAL = 91.0 SQ M / 979 SQ FT



(NOT SHOWN IN ACTUAL
LOCATION / ORIENTATION)

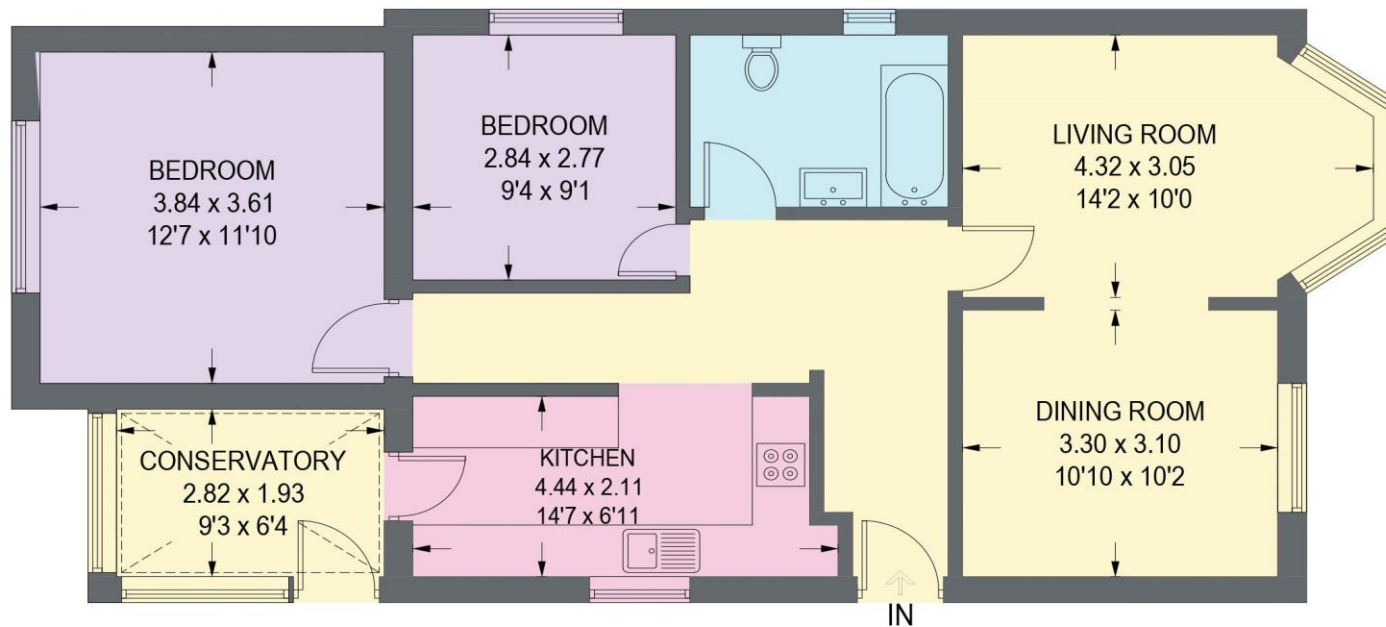


Illustration is for identification purposes only,
measurements are approximate, not to scale.

(IDMRP2025)



haus

West Bar House, 137 West Bar, Sheffield, S3 8PU
hello@haushomes.co.uk [haushomes.co.uk](https://www.haushomes.co.uk)

0114 276 8868