



## Ashby House Waxlow Way, Northolt

Offers Over £290,000

**SAB**  
ESTATES



## Ashby House

Waxlow Way, Northolt

- Assigned Parking Space
- Excellent Condition Throughout
- Juliette Balconies
- Two Bathrooms
- Leasehold: 103 Years Remaining
- Great Transport Links
- Service Charge: £221.06 pcm
- Ground Rent: £280 pa

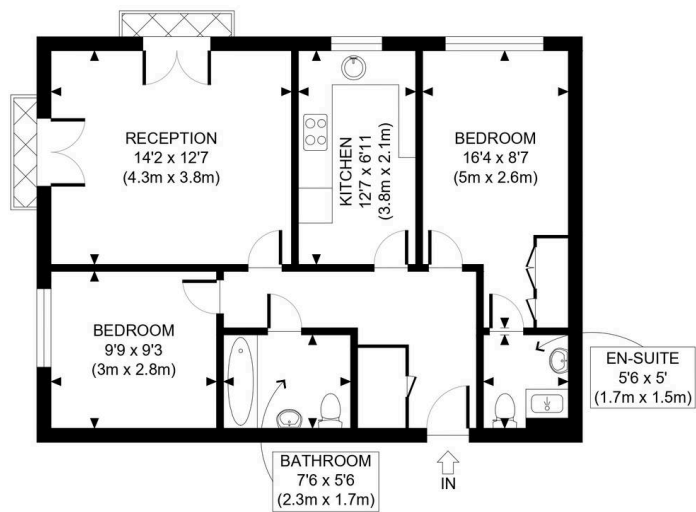
Council Tax band: C

Tenure: Leasehold

EPC Energy Efficiency Rating: B

EPC Environmental Impact Rating: B





THIRD FLOOR  
GROSS INTERNAL  
FLOOR AREA 679 SQ FT



APPROX. GROSS INTERNAL FLOOR AREA: 679 SQ FT/ 63 SQM

**PROPERTY PHOTO PLANS**.CO.UK  
ONE STOP SHOP FOR PROPERTY MARKETING

This plan is for illustrative purposes only and should be used as such by any prospective client. Whilst every attempt has been made to ensure the accuracy of the Floor Plan contained here, measurements of the doors, windows, rooms and any other items are approximate and no responsibility is taken for any errors, omissions, or misstatement. The services, systems and appliances shown have not been tested and no guarantee as to the operability or efficiency can be given.





## SAB Estates

236-238 Ruislip Road, Greenford - UB6 9RS

020 8575 2929 • [info@sabestates.com](mailto:info@sabestates.com) • [www.sabestates.com/](http://www.sabestates.com/)