



MARVELS LANE, SE12

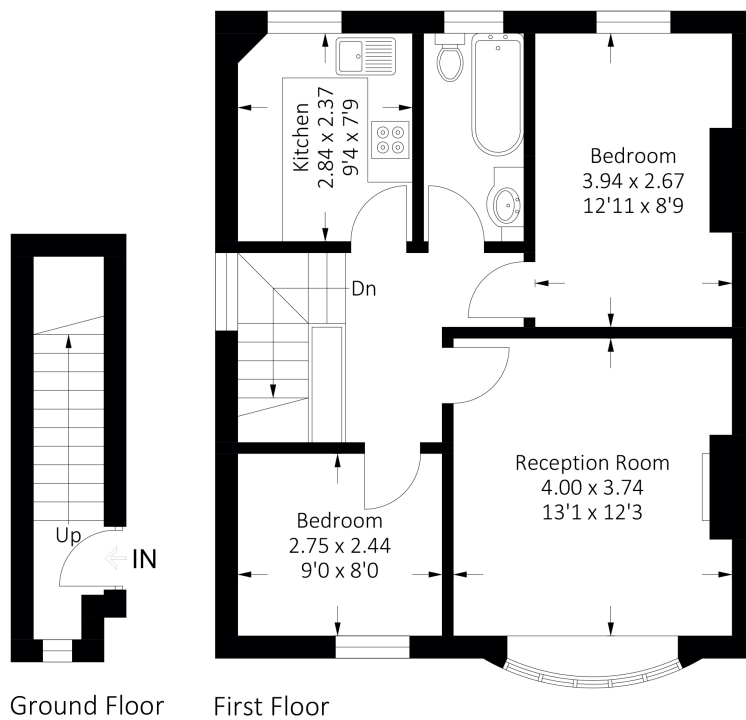
£1,700 per month

A period conversion first floor two bedroom apartment with a private garden.

First floor apartment
Living/dining room
Two double bedrooms

Separate kitchen
Private garden
Energy rating: D

STEP INSIDE MARVELS LANE



Ground Floor

First Floor



Approximate Gross Internal Area = 58.7 sq m / 632 sq ft

Lee
020 8296 1628

Energy Rating: D We aim to make our particulars both accurate and reliable. However, they are not guaranteed; nor do they form part of an offer or contract. If you require clarification on any points then please contact us, especially if you're traveling some distance to view. Please note that appliances and heating systems have not been tested and therefore no warranties can be given as to their good working order

MARSH &
PARSONS