



Wickham Road, SE4

£425,000

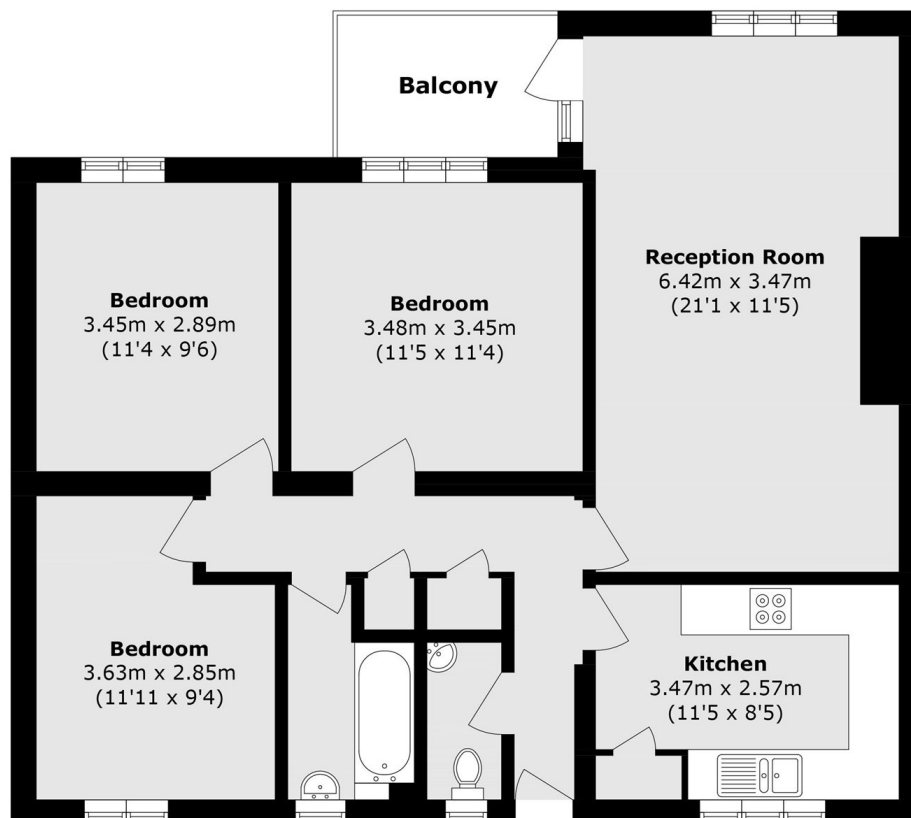
A well-presented three double bedroom ground floor flat with private entrance offering a generous reception and separate kitchen, positioned on a prime road in the Brockley Conservation area. The property also benefits from a private balcony and no onward chain.

Brockley and Ladywell stations are a short stroll providing Overground and frequent services into London Bridge. Crofton Park station is also within easy reach for Thameslink services into Blackfriars.

Features

- Large Reception Room
- Three Bedrooms
- Great Condition
- Private Balcony
- Conservation Area
- Chain Free

Wickham Road,
London, SE4



Total area (approx.): 82.4 sq. m (886.9 sq. ft)
Balcony area (approx.): 3.6 sq. m (38.7 sq. ft)