



**59 Woodlands, Winthorpe, Newark,
Nottinghamshire, NG24 2NL**

£375,000
Tel: 01636 611 811

 **RICHARD
WATKINSON
PARTNERS**
Surveyors, Estate Agents, Valuers, Auctioneers

Located in the delightful village of Winthorpe, this delightful three bedroom detached family home offers a perfect blend of modern convenience and countryside living. Set on an impressive 0.25-acre plot with areas of lawn and wild garden that gracefully extends down to the picturesque River Fleet, this property is a true gem for those seeking a serene lifestyle.

The house offers three well-proportioned bedrooms, providing ample space for family living. The modern bathroom, featuring a contemporary design white suite, ensuring convenience and style for all residents. The heart of the home is undoubtedly the spacious dining kitchen, which is fitted with bespoke hand made wooden units and flows seamlessly into a lovely garden room. This open-plan design creates an inviting atmosphere, perfect for entertaining or enjoying family meals while taking in the stunning views of the garden and surrounding countryside.

The generous 19' lounge is another highlight, offering elevated views over the garden and surrounding countryside and allowing plenty of space for relaxation and entertaining, making this home ideal for families or those who enjoy hosting guests.

The property provides ample parking for up to two cars and the driveway, with further parking available in the single garage, ensuring convenience for busy family households. The combination of modern amenities and the natural beauty of the location makes this home a rare find.

In summary, this detached three-bedroom family home in Woodlands, Winthorpe, is a wonderful opportunity for anyone looking to embrace a peaceful lifestyle while enjoying the comforts of modern living. With its stunning plot, spacious interiors, and beautiful views, it is a property not to be missed.

The village of Winthorpe is a well regarded community, with an Ofsted-rated good primary school nearby, making it an excellent choice for families. The active community centre provides various activities and events, offering a good local venue for residents. The nearby town of Newark (3 Miles) has an excellent range of amenities including,

Waitrose, Morrisons, Asda and Aldi supermarkets and a recently opened M&S food hall. Fast trains are available from Newark Northgate railway station, travelling to London King's Cross in around 75 minutes. There are good connections to the road network including the A1, A46 and A17, enabling swift commuting times to Nottingham, Lincoln and Sleaford.

The house is constructed of brick under a tiled roof covering, with a flat roof extending over the garage and garden room. The central heating is gas fired and windows are UPVC double glazed.

The living accommodation can be described in more detail as follows.

GROUND FLOOR

ENTRANCE HALL

Front entrance door, stairs off.

LOUNGE

19' x 10'11 (5.79m x 3.33m)



(plus 10'7 x 8'3)



Newly installed log burner in fireplace with oak beam over and slate tiled hearth, wood effect laminate floor covering, uPVC double glazed window to front elevation, two radiators. Part dividing archway leading to the rear part of the room where there is built in pine book shelving along one wall, uPVC double glazed window to the rear elevation with elevated views of the garden and countryside beyond.

DINING KITCHEN

12'4 x 11'2 (3.76m x 3.40m)



Radiator, sliding uPVC double glazed patio door to rear

elevation connecting to the patio terrace and rear garden and views over the surrounding countryside. Space for a dining table, range of fitted Shaker design bespoke made solid wood kitchen units comprise base cupboards and drawers including deep pan drawers, hand made wood block working surfaces over, twin Belfast sinks with mixer tap. Integral pull out bin, wall mounted wooden shelving. Open plan to:



GARDEN ROOM

8'11 x 6'1 (2.72m x 1.85m)



UPVC double glazed door to the rear elevation connecting to the patio terrace and garden. Recessed LED ceiling lights, personal door leading to single garage.

FIRST FLOOR

LANDING

With loft access hatch. Built in airing cupboard housing hot water cylinder.

BEDROOM ONE

12'9 x 9'9 (3.89m x 2.97m)



UPVC double glazed window to rear elevation with elevated views of the garden and surrounding countryside. Radiator, modern built in double wardrobes with sliding doors.

BEDROOM TWO

11'3 x 8'9 (3.43m x 2.67m)



Radiator, uPVC double glazed window to rear elevation, elevated views of the garden and surrounding countryside.

BEDROOM THREE

10'11 x 6'8 (3.33m x 2.03m)



Radiator and uPVC double glazed window to front elevation.

BATHROOM

6' x 5'5 (1.83m x 1.65m)



Fitted with a refitted modern white suite comprising P-shaped bath with a wall mounted shower, pedestal wash hand basin and wall mounted low suite WC. Wall mounted heated chrome towel radiator, extractor fan. LED ceiling lights, part tiled walls, uPVC double glazed window to side elevation.

OUTSIDE

The property occupies a lovely 0.25 acre plot with idyllic rear gardens running down to the River Fleet. To the frontage there are open plan gardens which are laid out with lawn and well stocked flower and shrub borders. There is a concrete driveway providing off road car parking and hardstanding dressed with slate chippings with additional parking. Side garden laid out with trees and shrubs, wooden side entrance gate leading to the rear garden.



SINGLE GARAGE

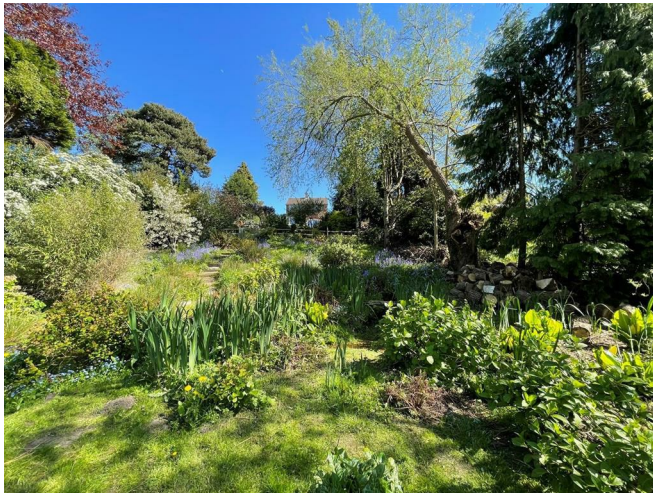
14'11 x 9'4 (4.55m x 2.84m)



A brick built single garage with a flat roof, up and over door to the front, personal door leading to garden room. Power and light connected with double power point and two strip lights. Plumbing for automatic washing machine. Wall mounted Viessman central heating boiler. Hot and cold water tap.



To the rear of the house there are superb enclosed and secluded elevated gardens with frontage to the River Fleet. A tarmac patio terrace runs along the rear of the house and has views over the garden and surrounding countryside. There is a wooden fence with gate leading to the frontage and driveway. Gardens, which are mostly laid to lawn, slope away from the house. These are well screened by close boarded fences and a variety of trees including holly and laurel hedgerows. There is a timber built summer house, a post and rail fence with hand gate which leads to the rear most part of the garden. This wildlife friendly garden area has frontage to the River Fleet and is a haven for wildlife. Timber steps continue down the slope leading to the riverside.



VIEWING

Strictly by appointment with the selling agents.

POSSESSION

Vacant possession will be given on completion.

MORTGAGE

Mortgage advice is available through our Mortgage Adviser. Your home is at risk if you do not keep up repayments on a mortgage or other loan secured on it.

COUNCIL TAX

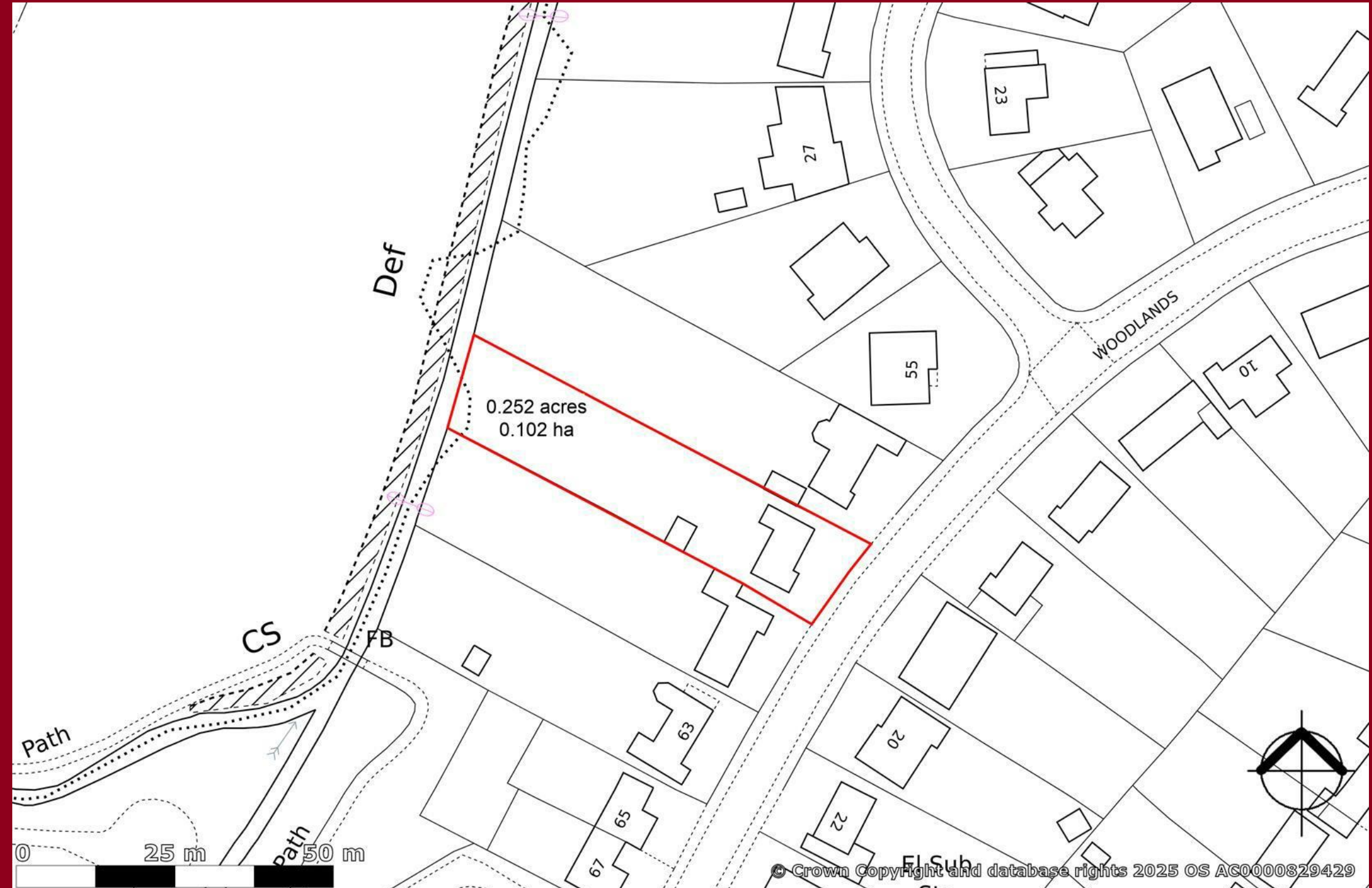
The property comes under Newark and Sherwood District Council Tax Band D.

TENURE

The property is freehold.

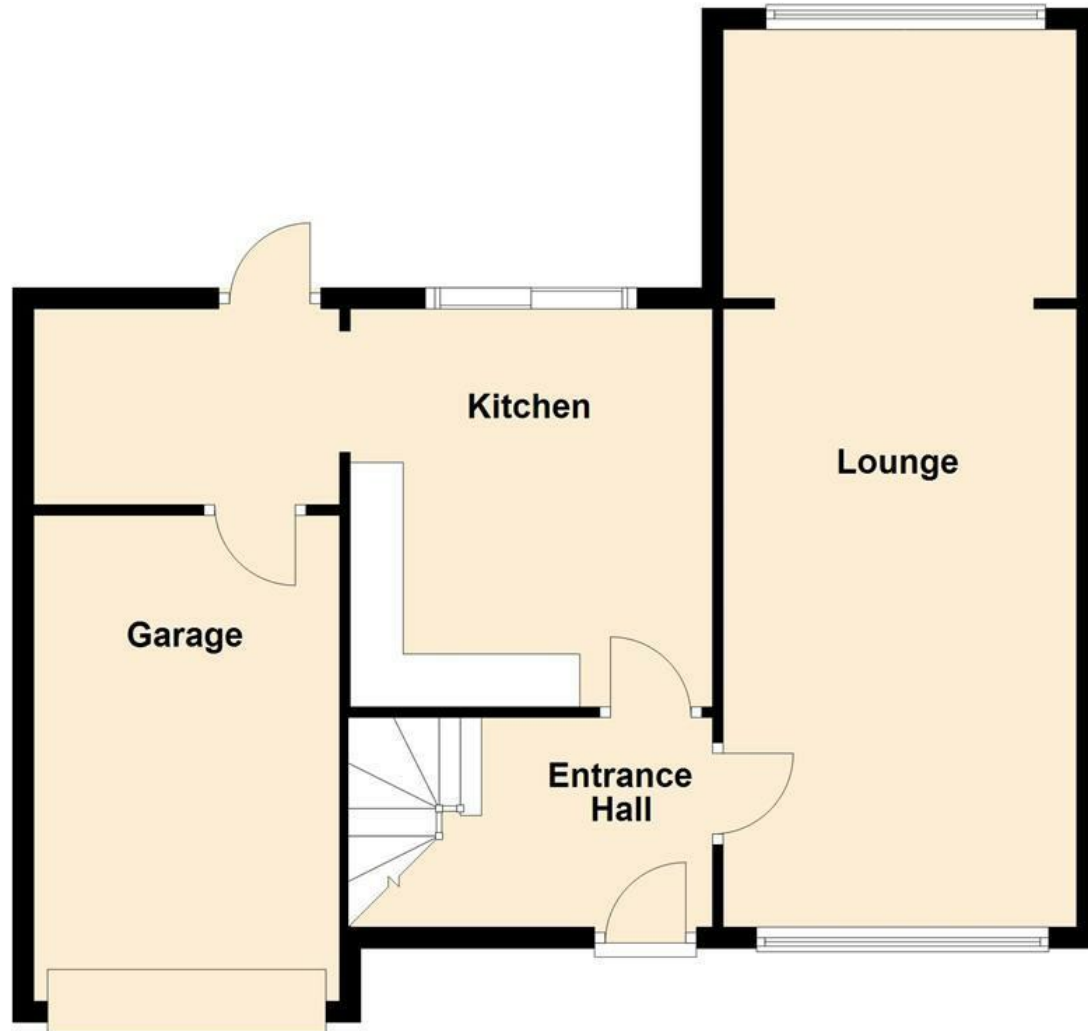
SERVICES

Mains water, electricity, gas and drainage are all connected to the property. The central heating system is gas fired with a new Viessman gas central heating boiler fitted around two years ago and located in the garage.



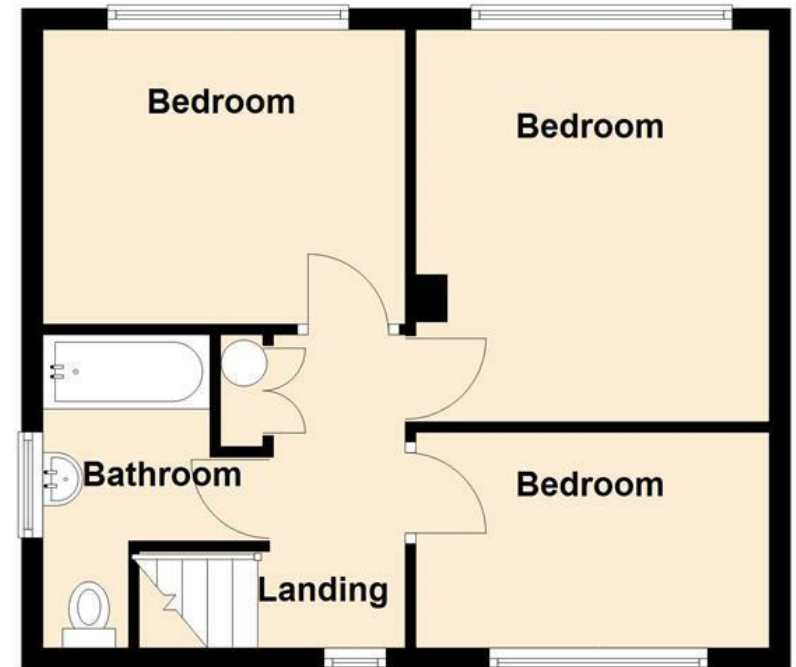
Ground Floor

Approx. 54.4 sq. metres (585.9 sq. feet)



First Floor

Approx. 40.1 sq. metres (431.5 sq. feet)



Total area: approx. 94.5 sq. metres (1017.4 sq. feet)



Energy Efficiency Rating		
	Current	Potential
Very energy efficient - lower running costs		
(92 plus) A		
(81-91) B		85
(69-80) C	71	
(55-68) D		
(39-54) E		
(21-38) F		
(1-20) G		
Not energy efficient - higher running costs		
England & Wales	EU Directive 2002/91/EC	



These particulars, whilst believed to be accurate are set out as a general outline only for guidance and do not constitute any part of an offer or contract. Intending purchasers should not rely on them as statements of representation of fact, but must satisfy themselves by inspection or otherwise as to their accuracy. No person in this firm's employment has the authority to make or give any representation or warranty in respect of the property. Any fixtures and fittings not mentioned in these details are excluded from the sale price. No services or appliances which may have been included in these details have been tested by the selling agent and therefore cannot be guaranteed to be in good working order.

As part of the service we offer we may recommend ancillary services to you such as mortgage advice, solicitors and surveyors which we believe will help with your property transaction. We wish to make you aware that should you decide to proceed we may receive a referral fee or equivalent. This could be a fee, commission, payment or other reward. We will not refer your details unless you have provided consent for us to do so. You are not under any obligation to provide us with your consent or to use any of these services. You are also free to choose an alternative provider.

Thinking of selling? For a FREE no obligation quotation call 01636 611 811



Richard Watkinson & Partners is the trading name of Richard Watkinson Ltd.
Registered in England. Ltd Registration number: 07140024

25 Stodman Street,
Newark NG24 1AT
Tel: 01636 611 811
Email: newark@richardwatkinson.co.uk



Surveyors, Estate Agents, Valuers, Auctioneers