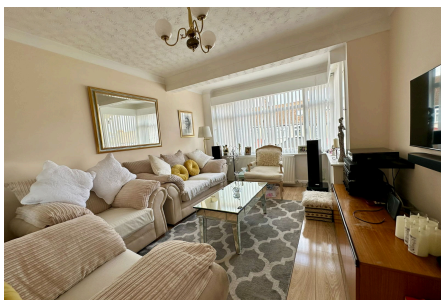


Central Park Gardens, Chatham, ME4 6UT

Guide Price £325,000-£350,000

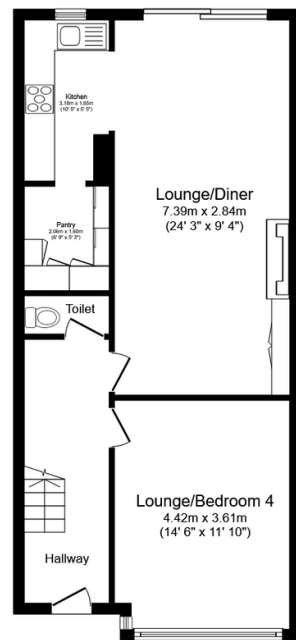
3 1 2



Call to book your viewing. This is an ideal family home located in a cul de sac location. This home offers spacious rooms with bundles of natural light. There is a vast amount of storage throughout with further potential. Additions of an extra reception room, utility area and downstairs cloakroom are going to make this a popular home! QUOTE AP0490

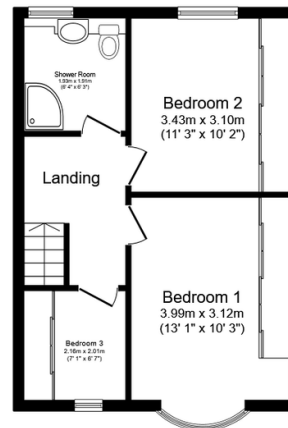
Key Features

- 3/4 Bedroom Terraced Family Home
- Spacious 25ft Lounge Dining Room
- Brick Built Outbuilding
- Near To Primary/Secondary Schools
- Tenure Freehold / Council Tax Band C
- Downstairs Cloakroom
- Walk In Pantry
- Built In Wardrobes To All Bedrooms
- Near To Rochester High Street with High Speed Train Link
- QUOTE AP0490



Ground Floor

Floor area 61.7 sq.m. (664 sq.ft.)



First Floor

Floor area 40.0 sq.m. (431 sq.ft.)

Total floor area: 101.7 sq.m. (1,095 sq.ft.)

This floor plan is for illustrative purposes only. It is not drawn to scale. Any measurements, floor areas (including any total floor area), openings and orientations are approximate. No details are guaranteed, they cannot be relied upon for any purpose and do not form any part of any agreement. No liability is taken for any error, omission or misstatement. A party must rely upon its own inspection(s). Powered by www.Propertybox.io