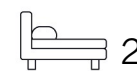


Living  
made  
better

Roma Corte  
Lewisham, SE13 7GR



£2,250 PCM

# Roma Corte, Lewisham, SE13 7GR

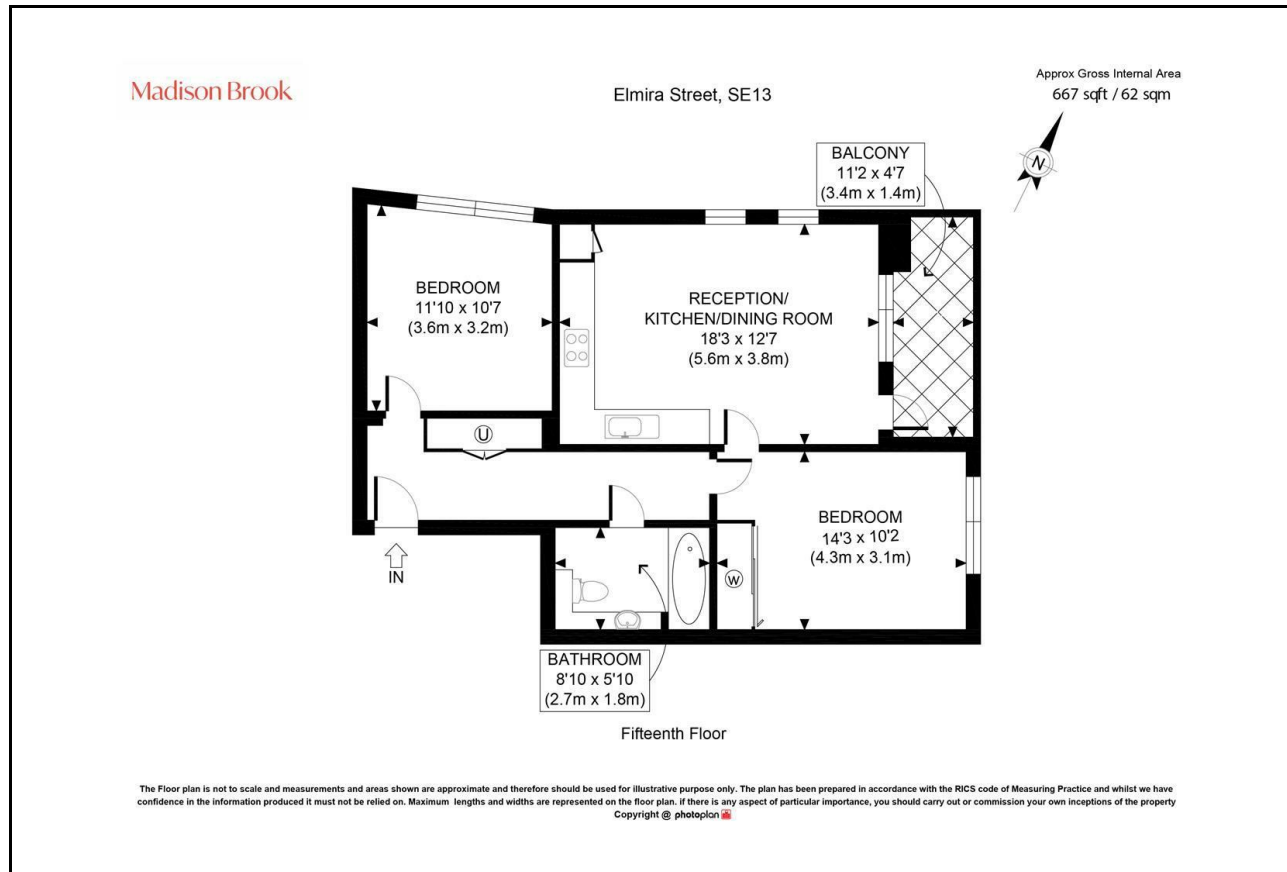
Madison Brook

## Property Summary

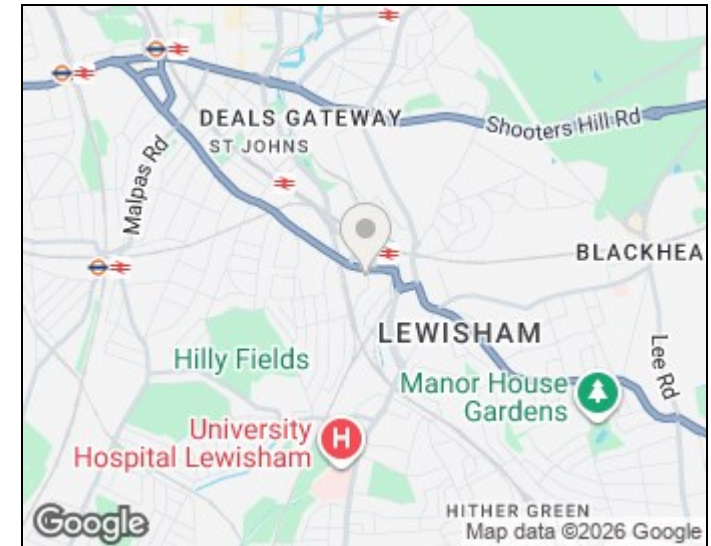
Situated on the fifteenth floor, this well-presented two-bedroom apartment offers approximately 667 sq ft of bright and modern living accommodation. The property comprises a generous open-plan reception, kitchen and dining room with direct access to a private balcony, two well-proportioned double bedrooms and a contemporary family bathroom. Large windows throughout provide an abundance of natural light and far-reaching views across the surrounding area.

Residents benefit from a concierge service and the convenience of secure parking, while the development is perfectly located close to the station, shopping centre and a wide range of everyday amenities.

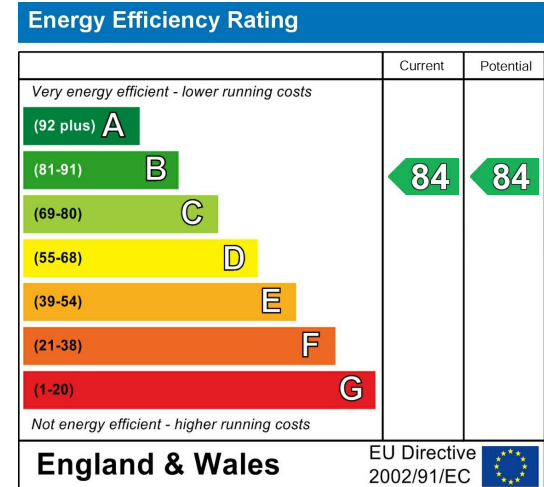
## Floorplan



## Area Map



## Energy Efficiency Graph



These particulars, whilst believed to be accurate are set out as a general outline only for guidance and do not constitute any part of an offer or contract. Intending purchasers should not rely on them as statements of representation of fact, but must satisfy themselves by inspection or otherwise as to their accuracy. No person in this firm's employment has the authority to make or give any representation or warranty in respect of the property.

43 Loampit Vale, Lewisham, London, SE13 7FT

Tel: 020 3946 6200 Email:

lewisham@madisonbrook.com

<https://madisonbrook.com/>