



## Grosvenor Road, W7

£620,000

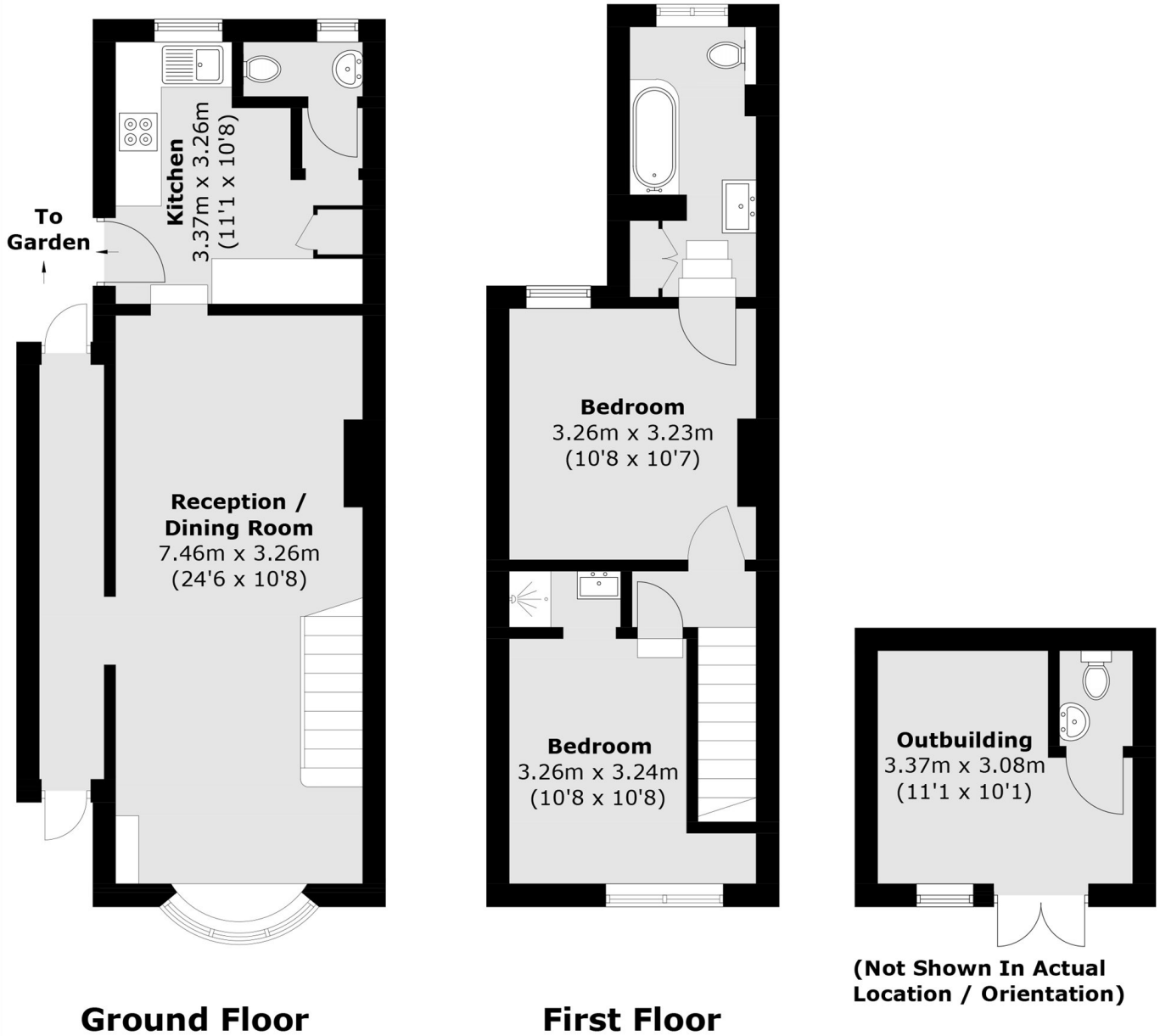
This two-bedroom end-of-terrace is presented to the market with no onward chain. The property offers a spacious lounge, a separate kitchen, and a downstairs WC. On the first floor, there are two double bedrooms and a newly renovated family bathroom. Additional benefits include a spacious garden and an outdoor building with an additional bathroom, making it perfect for use as a work-from-home office.

Well located, just under a mile away from West Ealing and Hanwell train station and also just over a mile from Northfields tube station. Also ideally located for the local parks and shopping facilities of West Ealing's Broadway.

### Features

- Freehold
- Two Bedrooms
- Two Bathrooms
- Chain Free
- Outdoor building
- 0.8 Mile Elizabeth Line

Grosvenor Road,  
London, W7



Total area (approx.): 73.1 sq. m (786.9 sq. ft)  
Outbuilding: 10.6 sq. m (114.1 sq. ft)