



TERCELET TERRACE, NW3 7LW

TERCELET TERRACE, NW3 7LW

Located in this sought after private estate, a very spacious four bedroomed modern terraced house of 2672 sq ft / 248 sqm, situated within a short walk of Hampstead Village.

The property boasts a large galleried first floor reception room as well as a spacious open plan kitchen/dining room on the ground floor that opens onto a private decked garden. The house also benefits from off street parking for two cars.

The nearest tube stations are Hampstead Northern Line (0.3 miles) and Finchley Road Jubilee Line (0.7 miles).

- 4 Bedrooms • 3 Bathrooms • Reception Room • Open Plan Kitchen/Dining Room • Guest Cloakroom • Private Decked Garden • Off Street Parking for 2 Vehicles • Camden Council Tax Band • EPC - D • Furnished (Unfurnished by negotiation)

EPC Rating: D Council Tax Band:

£3,250 PER WEEK

FURNISHED

TENANTS FEES: As well as paying the rent, tenants may also be required to make the following permitted payments:

Holding Deposit (maximum of 1 week's rent)

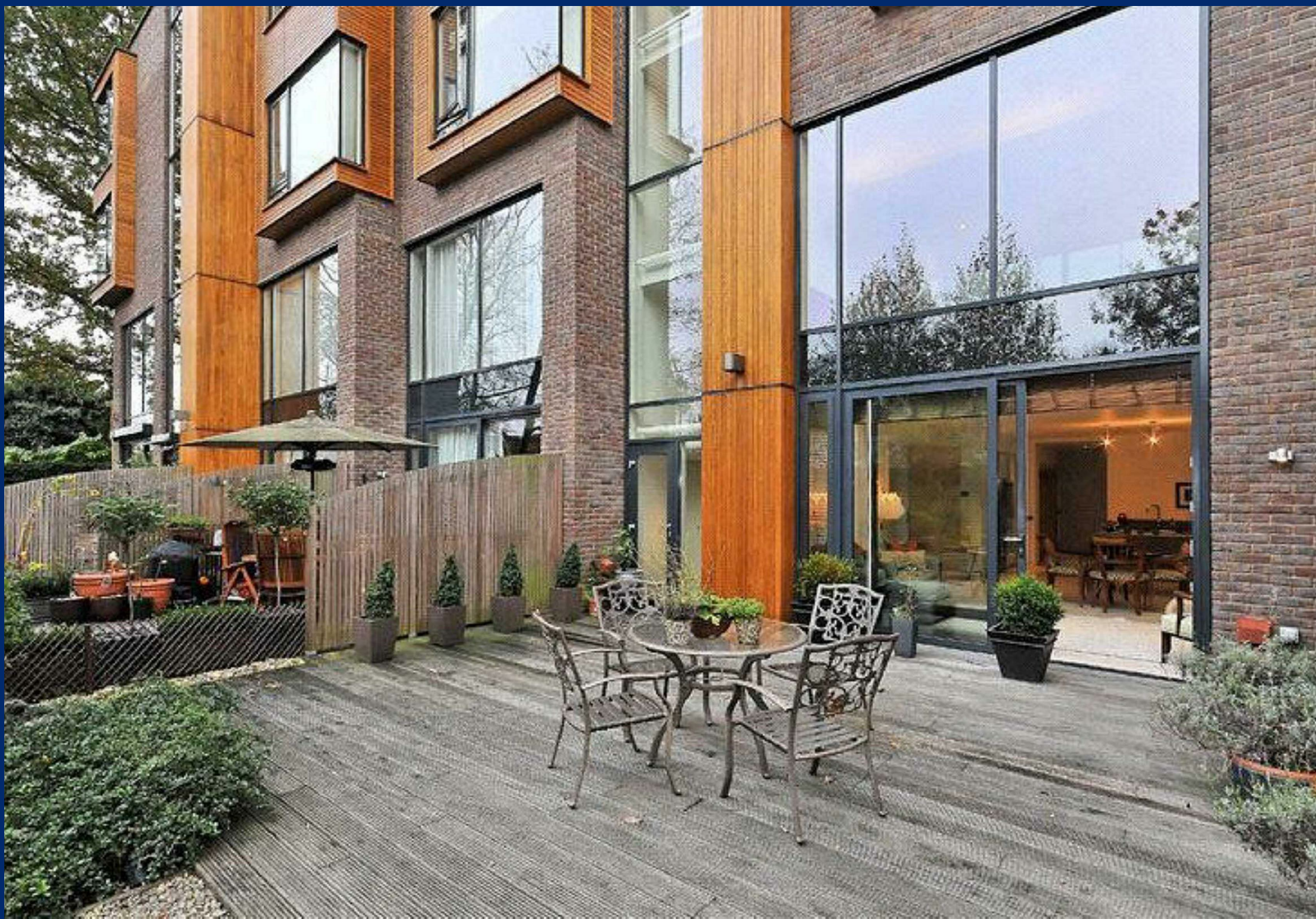
Security Deposit equivalent to 5 or 6 weeks' rent (AST tenancies)

Utilities, Communications services charges including TV licence, and Council Tax

Please contact us for information regarding any further Tenants permitted payments under the Tenant Fees Act 2019

Misrepresentation Act 1967. This brochure and the descriptions and measurements herein do not constitute representation and whilst every effort has been made to ensure accuracy, this cannot be guaranteed.





















4 Tercelet Terrace

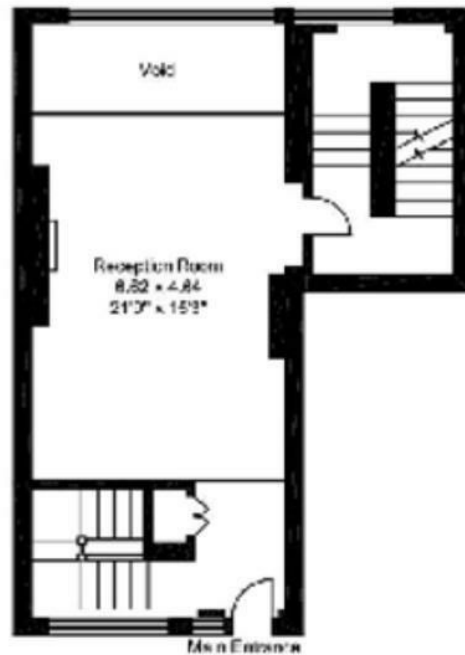
2672 sq ft (248 sq m)

For identification purposes only. Not to scale

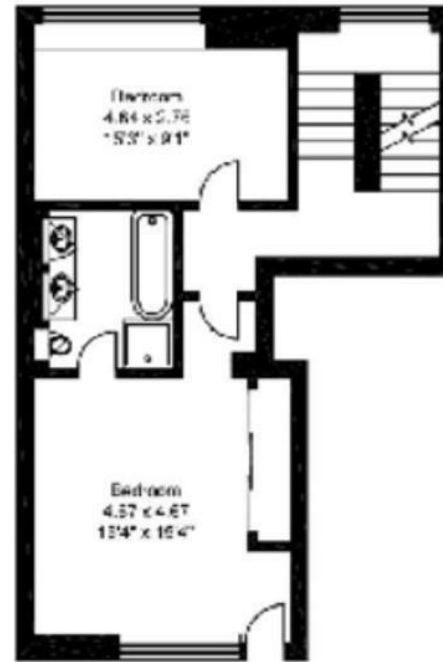
© Redinventory 2009.



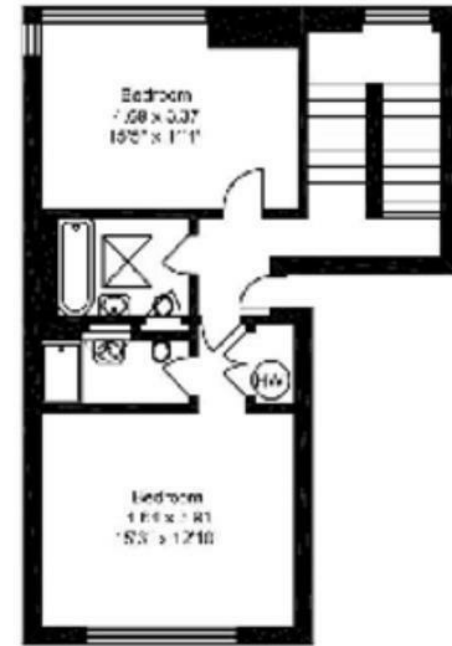
Ground Floor



First Floor



Second Floor



Third Floor